





Worklist: 6864

<u>LAB CASE</u>	<u>ITEM</u>	<u>ITEM TYPE</u>	<u>DESCRIPTION</u>	
M2024-2248	1	COBCK	AM 28 Blood Multi-Drug Quant Panel 1 by LC-QQQ	
M2024-2261	1	BCK	AM 28 Blood Multi-Drug Quant Panel 1 by LC-QQQ	
M2024-2412	3	BCK	AM 28 Blood Multi-Drug Quant Panel 1 by LC-QQQ	
M2024-2413	2	BCK	AM 28 Blood Multi-Drug Quant Panel 1 by LC-QQQ	
M2024-2426	1	COBCK	AM 28 Blood Multi-Drug Quant Panel 1 by LC-QQQ	
P2024-1522	2	BCK	AM 28 Blood Multi-Drug Quant Panel 1 by LC-QQQ	
P2024-1819	1	BCK	AM 28 Blood Multi-Drug Quant Panel 1 by LC-QQQ	
P2024-1820	1	BCK	AM 28 Blood Multi-Drug Quant Panel 1 by LC-QQQ	
P2024-1829	1	BCK	AM 28 Blood Multi-Drug Quant Panel 1 by LC-QQQ	
P2024-1843	1	BCK	AM 28 Blood Multi-Drug Quant Panel 1 by LC-QQQ	
P2024-1845	1	BCK	AM 28 Blood Multi-Drug Quant Panel 1 by LC-QQQ	
P2024-1846	1	BCK	AM 28 Blood Multi-Drug Quant Panel 1 by LC-QQQ	
P2024-1852	1	BCK	AM 28 Blood Multi-Drug Quant Panel 1 by LC-QQQ	
P2024-1881	1	BCK	AM 28 Blood Multi-Drug Quant Panel 1 by LC-QQQ	
P2024-1882	1	BCK	AM 28 Blood Multi-Drug Quant Panel 1 by LC-QQQ	
P2024-1884	1	BCK	AM 28 Blood Multi-Drug Quant Panel 1 by LC-QQQ	
P2024-1885	1	BCK	AM 28 Blood Multi-Drug Quant Panel 1 by LC-QQQ	
P2024-1893	2	BCK	AM 28 Blood Multi-Drug Quant Panel 1 by LC-QQQ	
P2024-1908	3	BCK	AM 28 Blood Multi-Drug Quant Panel 1 by LC-QQQ	
P2024-1918	1	BCK	AM 28 Blood Multi-Drug Quant Panel 1 by LC-QQQ	
P2024-1923	2	BCK	AM 28 Blood Multi-Drug Quant Panel 1 by LC-QQQ	

Worklist: 6864



<u>LAB CASE</u>	<u>ITEM</u>	<u>ITEM TYPE</u>	<u>DESCRIPTION</u>
P2024-1926	1	BCK	AM 28 Blood Multi-Drug Quant Panel 1 by LC-QQQ
P2024-1937	1	BCK	AM 28 Blood Multi-Drug Quant Panel 1 by LC-QQQ



AM# 28: Multi-Drug Quantitation by LC-MS/MS

Extraction Date: 07/08/2024

Plate lot#: 240528

Mobile phase A: 5mM Amm Form + 0.01% FA
Instant Buffer I

Blank Blood Lot: Lampire 24C52816

LCMS-QQQ ID: 069901

Analyst: Celena Shrum

Plate Retest Date: 11/28/2024

Mobile phase B: 0.01% Formic Acid in MeOH
Ethyl Acetate LC Methanol

Column: Agilent 120 EC-C18 (2.1x 100-2.7um)

Pre-Analytic:

- 1. Check levels of mobile phases and needle wash refill as needed. Ensure waste is not full.
- 2. Ensure correct column is installed and begin mobile phase flow allow to equilibrate ~ 30 minutes.

Analytic:

- 1. Remove standards, plate, controls, and samples from cold storage. Allow to reach room temperature.
- 2. Using a calibrated pipette, pipette **250µL blood** into the appropriate wells of the analytical (standards) plate.
Pipette ID: 16
- 3. Pipette **250µL of 0.5 M ammonium hydroxide** in wells of analytical plate.
- 4. Place on shaking incubator at ambient temp., 900rpm for 15 minutes.
- 5. Transfer **300L of blood+base** mixture to corresponding wells of SLE+ plate.
- 6. Apply positive pressure for approx. 10-15 seconds (or until no liquid remains on top of sorbent).
(Load at 85-100 PSI- Selector to the right). Manifold ID: 067104
- 7. Wait 5 minutes.
- 8. Add **900uL ethyl acetate**.
- 9. Wait 5 minutes.
- 10. Apply positive pressure for approx. 15 seconds. *(10-15 PSI- Selector to the left)*.
- 11. Add **900uL ethyl acetate**.
- 12. Wait 5 minutes.
- 13. Apply positive pressure for approx. 15 seconds. *(10-15 PSI- Selector to the left)*.
- 14. Remove plate containing eluate.
- 15. Add 50µl of 1% HCl in MeOH to all wells in the run and place ACT cover on top of plate prior to drying.
- 16. Place on SPE Dry and evaporate to dryness at approx. 35°C.
- 17. Reconstitute in **100µL 20% LC MeOH** and heat seal plate with foil. Place in autosampler and run worklist.

Post-Analytic

- 1. Create batch and process data.
- 2. Make necessary changes to integration limits
- 3. Integration linear and R² values ≥0.98 for each analyte.
- 4. For unknown samples and controls: response ratio within 20% of average of controls and standards, RT within +/- 5% (tramadol RT +/-2%), S/N for primary transition >10 and secondary transitions >5.
- 5. Did all QCs pass for each analyte? Yes, see comments Add Control data to QC tracking spreadsheet.
- 6. Central File Packet to include: LIMS Worklist, Method Checklist, Calibration and Control Reports.

Comments: M2024-2413-2 was reinjected due to the incorrect sample being injected the first time (well position was incorrect).

Compounds included in central file:

6-MAM

Amphetamine 5-250 --calibrators 7 and 8 dropped due to accuracy- QUALITATIVE ONLY DUE TO QC 250 ACCURACY

Bromazepam

Bromazepam

Cocaine
Codeine
Methorphan
Duloxetine
EDDP
Fentanyl
Fluorofentanyl 1-100 --calibrator 1 dropped due to accuracy
Hydrocodone
Hydroxyzine
Lamotrigine 50-1000 --calibrators 6, 7, and 8 dropped due to accuracy
Lorazepam
Methadone
Methamphetamine 5-500 --calibrator 8 dropped due to accuracy
Metoprolol 5-500 --calibrator 8 dropped due to accuracy
Mitragynine
Morphine
Nordiazepam
Norfentanyl
Norhydrocodone 5-500 --calibrator 8 dropped due to linearity
Noroxycodone
Oxycodone
Ephedrine/Pseudoephedrine
Quetiapine
Trazodone 5-500 --calibrator 8 dropped due to accuracy
Xylazine

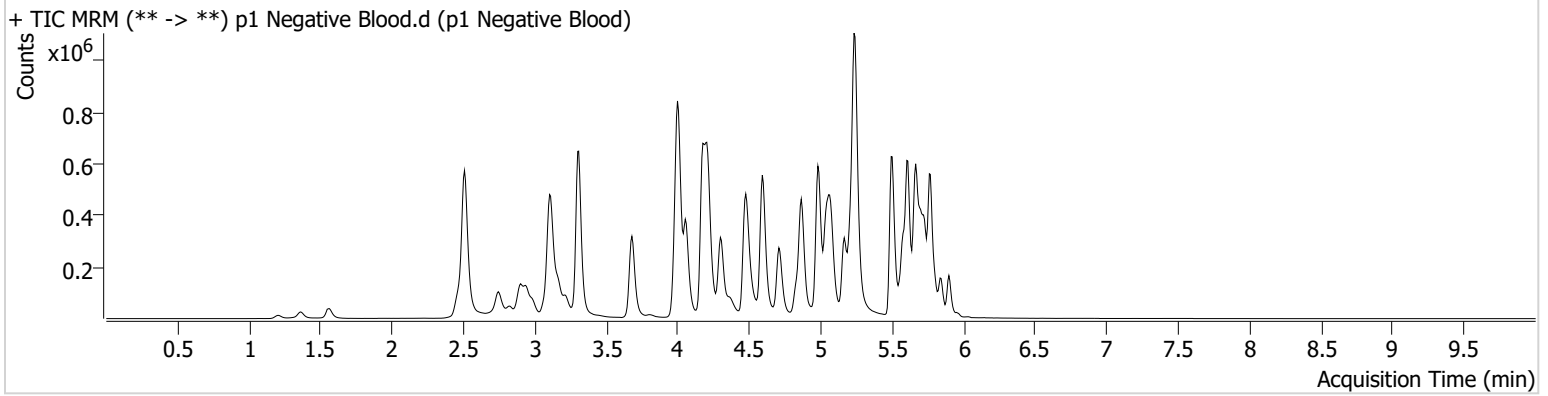
AM #28 Multi-Drug Quant. Results



Batch results D:\MassHunter\Data\2024\AM 27 28\070824 AM 27 28 CS\QuantResults\AM 28 Cases.batch.bin
Calibration Last Update 7/11/2024 12:54:11 PM

Instrument	Falco (069901)	Data File	p1 Negative Blood.d
Type	Sample	Sample	p1 Negative Blood
Acq. Method	AM 28 MDQ P1.m	Operator	Celena Shrum
Sample Position	P2-F2	Comment	Only drugs and concentrations listed on the laboratory report itself are appropriate to be used for interpretation purposes. Any drugs or values included in the notes but not included on the report are used by laboratory personnel to make determinations/reach conclusions within the confines of the methods.
Injection Volume	2		
Acq. Date-Time	7/8/2024 10:34:30 PM		
Sample Info.			

Sample Chromatogram



AM #28 Multi-Drug Quant. Results

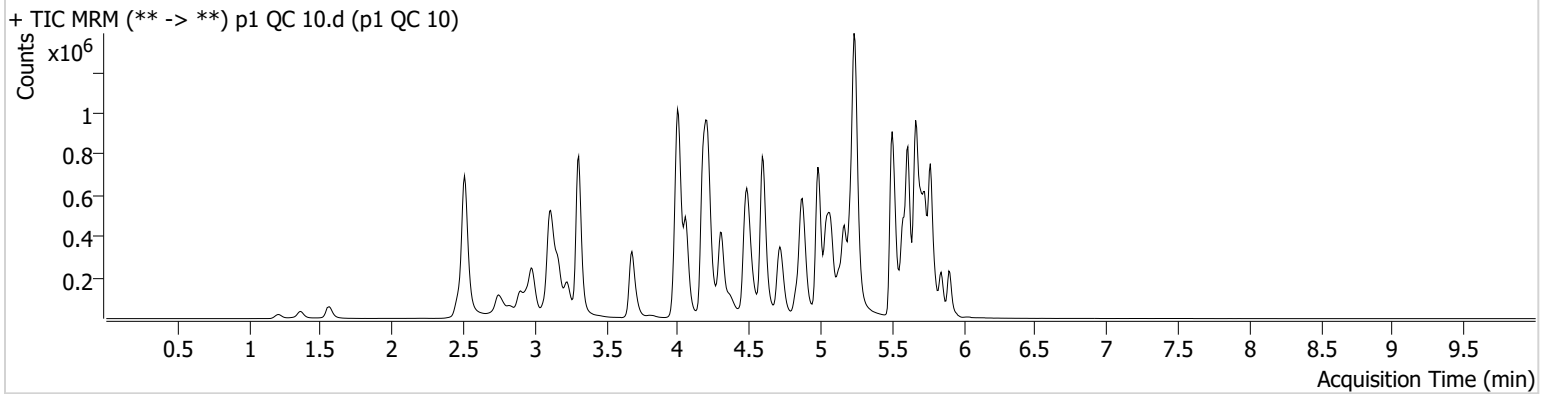


Batch results D:\MassHunter\Data\2024\AM 27 28\070824 AM 27 28 CS\QuantResults\AM 28 Cases.batch.bin
Calibration Last Update 7/11/2024 12:54:11 PM

Instrument Falco (069901) **Data File** p1 QC 10.d
Type QC **Sample** p1 QC 10
Acq. Method AM 28 MDQ P1.m **Operator** Celena Shrum
Sample Position P2-A2 **Comment**
Injection Volume 2
Acq. Date-Time 7/8/2024 9:30:39 PM
Sample Info.

Only drugs and concentrations listed on the laboratory report itself are appropriate to be used for interpretation purposes. Any drugs or values included in the notes but not included on the report are used by laboratory personnel to make determinations/reach conclusions within the confines of the methods.

Sample Chromatogram



Name	RT	Resp.	S/N	Ratio	S/N	ISTD Resp.	Final Conc.
6-MAM	3.075	3142	811.72	67.1	256.46	93197	1.0103 ng/ml
Amphetamine	2.986	357732	5554.00	48.9	269.78	422591	9.8008 ng/ml
Benzoylcegonine	3.829	4802	91.68	38.0	60.98	16760	9.3910 ng/ml
Bromazolam	5.766	83581	79159.67	115.0	4013.15	211667	10.0562 ng/ml
Cocaine	4.209	148971	794.13	50.9	735.91	1264521	9.4501 ng/ml
Codeine	2.521	17390	329.40	98.3	108.83	78223	10.2627 ng/ml
Dextromethorphan	5.223	110509	719.08	83.0	304.62	489160	9.2218 ng/ml
Duloxetine	5.606	23369	617.02	13.5	390.12	116604	10.1969 ng/ml
EDDP	5.209	113589	336.09	41.0	1050.31	528940	9.7004 ng/ml
Fentanyl	5.055	17080	2960.24	80.5	369.52	1030321	0.8516 ng/ml
Fluorofentanyl	5.110	46696	1112.73	41.1	1111.13	9974	0.7436 ng/ml
Hydrocodone	2.968	66478	299.19	37.5	66.99	291785	10.5016 ng/ml
Hydroxyzine	5.670	204419	2890.76	71.6	1667.09	489160	9.4689 ng/ml
Lamotrigine	4.218	117342	1790.09	86.6	1958.82	1764375	100.1238 ng/ml
Lorazepam	5.706	79611	668.20	52.2	70.27	525437	10.3270 ng/ml
Methadone	5.611	274682	664.42	52.9	821.69	1107321	9.2287 ng/ml
Methamphetamine	3.168	482402	413.10	36.9	397.12	1039063	9.4966 ng/ml
Metoprolol	4.272	38810	2374.21	105.4	785.01	1587945	10.1006 ng/ml
Mitragynine	5.191	51407	262.37	33.5	936.41	1107321	9.2051 ng/ml
Morphine	1.213	10032	3017.31	45.9	124.42	18705	9.3167 ng/ml
Nordiazepam	5.853	87712	648.90	55.1	337.54	272522	9.5064 ng/ml
Norfentanyl	4.028	31398	148.41	39.4	382.19	1254431	0.9447 ng/ml
Norhydrocodone	3.002	12504	40.49	39.2	60.70	94667	10.0188 ng/ml
Noroxycodone	2.846	37931	300.73	48.7	4710.38	127614	9.5521 ng/ml
Oxycodone	2.777	95797	532.60	28.8	552.48	404649	9.7710 ng/ml
Pseudoephedrine	2.518	334685	7180.05	16.7	2961.06	1764375	9.2430 ng/ml
Quetiapine	5.519	217918	3143.02	55.8	155.82	301999	9.5077 ng/ml
Trazodone	5.130	289802	285.37	60.6	1788.46	982053	9.7491 ng/ml
Xylazine	4.028	119948	523.49	44.8	348.45	551393	9.3207 ng/ml

AM #28 Multi-Drug Quant. Results

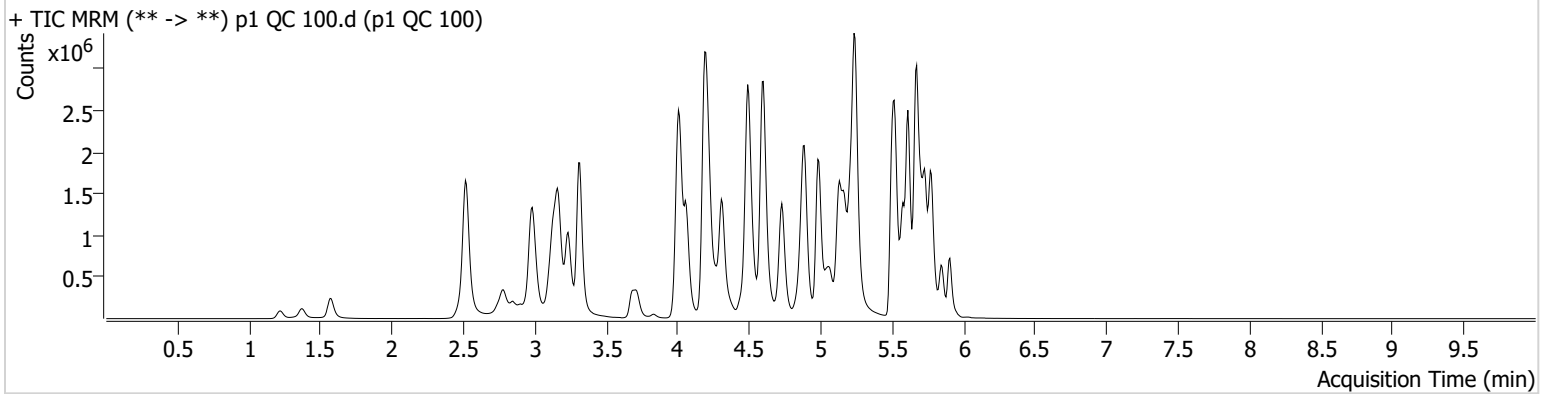


Batch results D:\MassHunter\Data\2024\AM 27 28\070824 AM 27 28 CS\QuantResults\AM 28 Cases.batch.bin
Calibration Last Update 7/11/2024 12:54:11 PM

Instrument Falco (069901) **Data File** p1 QC 100.d
Type QC **Sample** p1 QC 100
Acq. Method AM 28 MDQ P1.m **Operator** Celena Shrum
Sample Position P2-B2 **Comment**
Injection Volume 2
Acq. Date-Time 7/9/2024 7:05:50 AM
Sample Info.

Only drugs and concentrations listed on the laboratory report itself are appropriate to be used for interpretation purposes. Any drugs or values included in the notes but not included on the report are used by laboratory personnel to make determinations/reach conclusions within the confines of the methods.

Sample Chromatogram



Name	RT	Resp.	S/N	Ratio	S/N	ISTD Resp.	Final Conc.
6-MAM	3.075	30140	90449.55	70.4	260672.23	89018	10.0679 ng/ml
Amphetamine	2.986	2769001	183.44	47.9	69645.65	400810	96.6021 ng/ml
Benzoylecgonine	3.835	45778	755.28	37.3	379.29	16281	94.7667 ng/ml
Bromazolam	5.766	601000	10138.80	117.9	639990.69	153906	104.2325 ng/ml
Cocaine	4.209	1254187	967.76	53.1	1037.39	1031872	96.9567 ng/ml
Codeine	2.521	140969	351.06	98.9	4634.02	67218	108.7876 ng/ml
Dextromethorphan	5.223	974242	662.90	81.3	336.94	421322	95.2870 ng/ml
Duloxetine	5.606	131906	7776.72	13.4	338.72	64083	106.2989 ng/ml
EDDP	5.209	1022979	782.69	41.5	343.53	446490	100.1597 ng/ml
Fentanyl	5.055	159665	384.25	77.8	546.30	894330	9.3838 ng/ml
Fluorofentanyl	5.110	395961	9085.70	41.1	28296.62	8238	10.5260 ng/ml
Hydrocodone	2.968	590059	263.94	39.0	166.37	282379	100.7479 ng/ml
Hydroxyzine	5.670	1837719	32468.58	73.7	1394717.50	421322	93.3912 ng/ml
Lamotrigine	4.225	677133	1893.49	88.5	12304.03	1493397	915.2762 ng/ml
Lorazepam	5.699	431024	1837.82	52.0	530.47	334286	93.6376 ng/ml
Methadone	5.611	2610535	1553.90	52.9	2686.69	964316	94.7089 ng/ml
Methamphetamine	3.168	2906991	46766.07	36.9	299.82	979429	105.5303 ng/ml
Metoprolol	4.272	346732	618914.18	103.2	2856.30	1475105	104.1785 ng/ml
Mitragynine	5.191	494350	368858.25	34.0	483.07	964316	98.5122 ng/ml
Morphine	1.220	89374	2077.13	44.1	344.64	16943	100.9756 ng/ml
Nordiazepam	5.853	676235	925.36	55.2	2007.66	203070	99.8743 ng/ml
Norfentanyl	4.028	262625	3429.23	37.6	2572.67	959506	9.7191 ng/ml
Norhydrocodone	3.009	137586	218.36	40.8	156.79	89658	104.3456 ng/ml
Noroxycodone	2.846	337817	1877.63	50.7	566.36	110742	100.5765 ng/ml
Oxycodone	2.777	926877	785.84	29.2	1595.36	380322	101.6934 ng/ml
Pseudoephedrine	2.525	3014204	1542.04	16.3	283.80	1493397	95.7351 ng/ml
Quetiapine	5.519	2007125	2097396.76	58.4	4161088.13	279444	95.6370 ng/ml
Trazodone	5.130	2459868	513337.06	65.6	3103038.11	868658	102.2124 ng/ml
Xylazine	4.028	1081161	54796.28	48.0	3419.01	462915	98.5645 ng/ml

AM #28 Multi-Drug Quant. Results

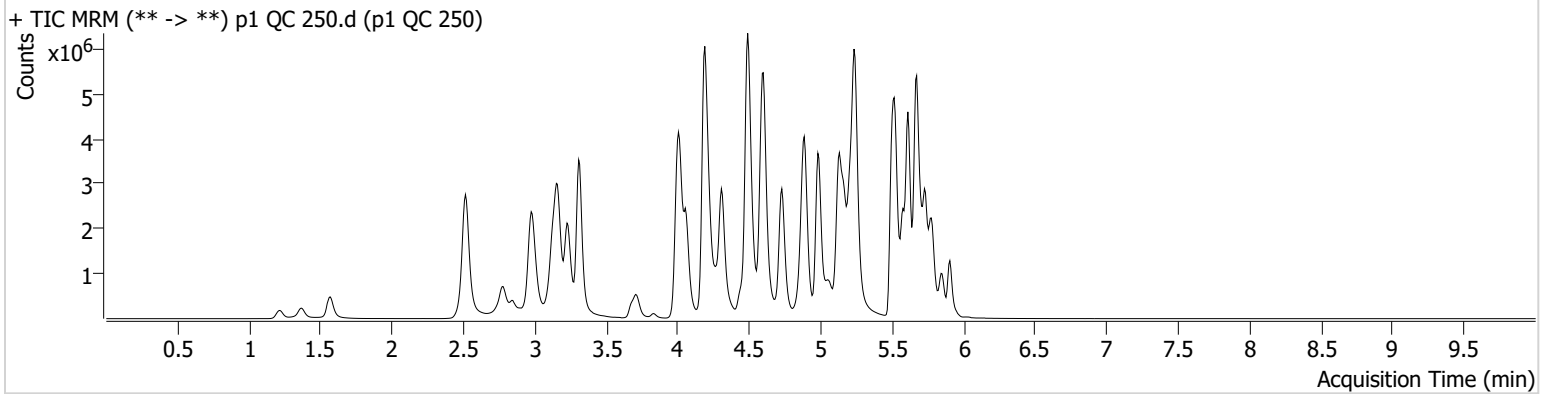


Batch results D:\MassHunter\Data\2024\AM 27 28\070824 AM 27 28 CS\QuantResults\AM 28 Cases.batch.bin
Calibration Last Update 7/11/2024 12:54:11 PM

Instrument Falco (069901) **Data File** p1 QC 250.d
Type QC **Sample** p1 QC 250
Acq. Method AM 28 MDQ P1.m **Operator** Celena Shrum
Sample Position P2-C2 **Comment**
Injection Volume 2
Acq. Date-Time 7/8/2024 9:51:56 PM
Sample Info.

Only drugs and concentrations listed on the laboratory report itself are appropriate to be used for interpretation purposes. Any drugs or values included in the notes but not included on the report are used by laboratory personnel to make determinations/reach conclusions within the confines of the methods.

Sample Chromatogram



Name	RT	Resp.	S/N	Ratio	S/N	ISTD Resp.	Final Conc.
6-MAM	3.075	68852	125413.41	72.7	817.30	80443	25.4376 ng/ml
Amphetamine	2.986	5047133	292.20	48.0	358.45	358778	199.1125 ng/ml
Benzoylcegonine	3.829	115215	101887.53	37.4	388.13	15352	253.4402 ng/ml
Bromazolam	5.766	976396	4380.16	118.5	1005048.58	107115	244.0287 ng/ml
Cocaine	4.209	2563899	848.55	51.9	926.42	823138	248.3765 ng/ml
Codeine	2.521	268140	1041.63	101.0	11476.48	57517	243.5638 ng/ml
Dextromethorphan	5.216	2013833	1282.82	79.8	1345.72	341330	243.2759 ng/ml
Duloxetine	5.606	260671	3595.73	13.3	716.30	52613	256.1024 ng/ml
EDDP	5.209	2340410	2004.36	40.6	676.03	408444	249.9764 ng/ml
Fentanyl	5.056	385257	1378.09	78.1	574212.92	875452	23.1623 ng/ml
Fluorofentanyl	5.110	949668	17891.95	41.2	7681.29	8567	24.6854 ng/ml
Hydrocodone	2.961	1374778	∞	39.0	1286.69	260100	255.6677 ng/ml
Hydroxyzine	5.663	3970753	40419.70	75.1	516891.92	341330	248.1189 ng/ml
Lamotrigine	4.225	978118	8296.03	89.4	2502.64	1237325	1625.4660 ng/ml
Lorazepam	5.699	534118	5268.53	53.1	1195.57	177224	219.8923 ng/ml
Methadone	5.611	5687378	2229.13	52.7	1413.34	821645	241.2200 ng/ml
Methamphetamine	3.161	6232765	227672.91	36.1	57714.82	926341	249.7594 ng/ml
Metoprolol	4.272	694929	797734.54	103.5	1044.87	1267471	244.0900 ng/ml
Mitragynine	5.191	1053984	1298979.48	34.3	2618.92	821645	246.0354 ng/ml
Morphine	1.213	205199	816.55	43.9	482.60	16306	242.3602 ng/ml
Nordiazepam	5.853	1216797	1360.90	55.4	838.57	149121	244.9621 ng/ml
Norfentanyl	4.028	475824	47563.76	37.9	5816.91	680007	24.7509 ng/ml
Norhydrocodone	3.002	311366	2172.45	40.0	139.92	75175	279.7088 ng/ml
Noroxycodone	2.846	713922	1076.10	50.6	605.52	95054	248.0334 ng/ml
Oxycodone	2.777	2134010	3202.83	29.4	3573.70	352591	252.7269 ng/ml
Pseudoephedrine	2.518	6380974	138892.82	16.0	36369.81	1237325	244.1900 ng/ml
Quetiapine	5.519	4143940	96891.05	60.4	95726.93	229565	240.5246 ng/ml
Trazodone	5.130	5479968	186950.87	67.7	136728.34	840052	236.7704 ng/ml
Xylazine	4.021	2425760	5101.96	48.9	820.50	406298	251.7215 ng/ml

AM #28 Multi-Drug Quant. Results

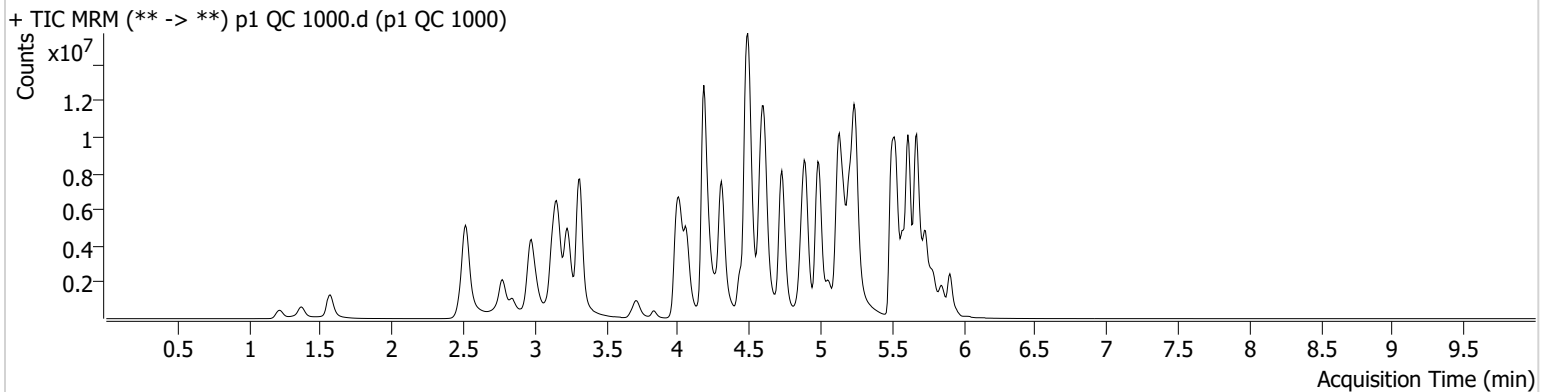


Batch results D:\MassHunter\Data\2024\AM 27 28\070824 AM 27 28 CS\QuantResults\AM 28 Cases.batch.bin
Calibration Last Update 7/11/2024 12:54:11 PM

Instrument	Falco (069901)	Data File	p1 QC 1000.d
Type	QC	Sample	p1 QC 1000
Acq. Method	AM 28 MDQ P1.m	Operator	Celena Shrum
Sample Position	P2-D2	Comment	
Injection Volume	2		
Acq. Date-Time	7/8/2024 10:13:12 PM		
Sample Info.			

Only drugs and concentrations listed on the laboratory report itself are appropriate to be used for interpretation purposes. Any drugs or values included in the notes but not included on the report are used by laboratory personnel to make determinations/reach conclusions within the confines of the methods.

Sample Chromatogram



Name	RT	Resp.	S/N	Ratio	S/N	ISTD Resp.	Final Conc.
6-MAM	3.075	220723	485.03	68.5	794.37	60936	107.6245 ng/ml
Amphetamine	2.979	9571398	269110.50	47.4	132802.19	291300	468.1641 ng/ml
Benzoylcegonine	3.835	470686	49507.93	36.8	1619.89	15595	1020.1157 ng/ml
Bromazolam	5.766	1531118	389710.68	123.2	1060569.49	44818	916.0612 ng/ml
Cocaine	4.209	6004074	1546.40	48.7	56843.39	463280	1033.2557 ng/ml
Codeine	2.521	636421	8940.57	92.5	13015.07	38010	878.4490 ng/ml
Dextromethorphan	5.216	4103257	2366.32	79.0	1892.46	170480	992.7396 ng/ml
Duloxetine	5.599	382299	3588.56	13.8	1436.43	18131	1090.4452 ng/ml
EDDP	5.209	9396256	2254.06	39.7	605.72	375531	1090.4027 ng/ml
Fentanyl	5.055	1564877	4064.14	76.3	61731.71	835265	98.6802 ng/ml
Fluorofentanyl	5.103	2974078	135065.76	43.0	18968.23	6397	104.5326 ng/ml
Hydrocodone	2.961	4109715	358.90	41.5	420.89	213447	932.7691 ng/ml
Hydroxyzine	5.663	9586329	31482.44	78.2	211719.39	170480	1197.1220 ng/ml
Lamotrigine	4.232	1075184	34209.41	89.3	23927.94	709812	3151.2988 ng/ml
Lorazepam	5.706	671671	15876.84	54.9	4074.92	44447	1105.6589 ng/ml
Methadone	5.611	15717048	3080.58	53.5	5503.07	546304	1000.6744 ng/ml
Methamphetamine	3.155	16405657	89953.39	34.8	115332.82	827344	752.2527 ng/ml
Metoprolol	4.272	1404715	2174073.63	106.6	2117.45	928052	675.2876 ng/ml
Mitragynine	5.184	2652416	1734.95	35.3	355.21	546304	930.3563 ng/ml
Morphine	1.213	567246	3797.69	47.4	46076.23	12022	911.6485 ng/ml
Nordiazepam	5.853	2012611	4119.82	57.8	746.06	68053	888.2599 ng/ml
Norfentanyl	4.028	671962	42654.80	38.1	8319.18	211044	112.4055 ng/ml
Norhydrocodone	3.002	886477	127.92	41.8	1128.38	45751	1304.3257 ng/ml
Noroxycodone	2.846	1966791	3147.18	51.9	454.40	68874	943.8205 ng/ml
Oxycodone	2.770	7296296	4877.85	29.2	1735.64	308182	988.9493 ng/ml
Pseudoephedrine	2.518	15869543	91.59	15.6	131.50	709812	1057.7305 ng/ml
Quetiapine	5.526	10018834	95660.80	59.8	264592.39	134977	989.3785 ng/ml
Trazodone	5.130	14772988	257.94	73.1	685793.41	824577	652.0276 ng/ml
Xylazine	4.021	6915631	330336.05	49.0	27560.44	287771	1012.7457 ng/ml

AM #28 Multi-Drug Quant. Results



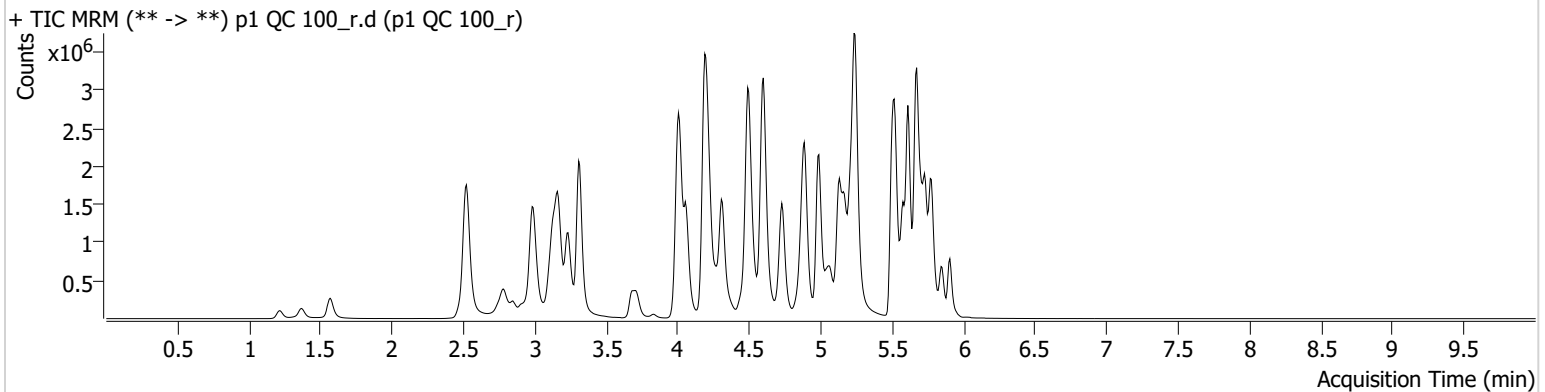
Batch results D:\MassHunter\Data\2024\AM 27 28\070824 AM 27 28 CS\QuantResults\AM 28 Cases.batch.bin
Calibration Last Update 7/11/2024 12:54:11 PM

Instrument Falco (069901) **Data File** p1 QC 100_r.d
Type QC **Sample** p1 QC 100_r
Acq. Method AM 28 MDQ P1.m **Operator** Celena Shrum
Sample Position P2-B2 **Comment**
Injection Volume 2
Acq. Date-Time 7/9/2024 2:28:13 PM
Sample Info.

Only drugs and concentrations listed on the laboratory report itself are appropriate to be used for interpretation purposes. Any drugs or values included in the notes but not included on the report are used by laboratory personnel to make determinations/reach conclusions within the confines of the methods.

Bracket QC for reinjects

Sample Chromatogram



Name	RT	Resp.	S/N	Ratio	S/N	ISTD Resp.	Final Conc.
6-MAM	3.075	33111	974.82	72.0	121.36	96923	10.1582 ng/ml
Amphetamine	2.992	2932636	28700.53	47.8	62168.23	419606	97.7551 ng/ml
Benzoylcegonine	3.835	50756	1655.64	36.2	764.59	17984	95.1234 ng/ml
Bromazolam	5.766	618721	604555.60	117.0	979587.82	163995	100.6860 ng/ml
Cocaine	4.209	1399224	8893.54	51.4	14116.04	1114587	100.1396 ng/ml
Codeine	2.528	151549	528.80	98.9	742.80	72116	109.0109 ng/ml
Dextromethorphan	5.223	1050472	499.37	80.9	799.18	454922	95.1541 ng/ml
Duloxetine	5.606	138126	4955.30	13.3	1275.22	69106	103.2160 ng/ml
EDDP	5.209	1119589	1241.28	41.7	1032.70	497622	98.3613 ng/ml
Fentanyl	5.055	172243	396.92	78.2	82136.71	981081	9.2275 ng/ml
Fluorofentanyl	5.110	437601	19503.46	41.9	211382.65	9044	10.5991 ng/ml
Hydrocodone	2.968	648279	573.04	38.3	∞	294752	106.0707 ng/ml
Hydroxyzine	5.670	2003660	6926.45	74.1	62418.70	454922	94.2977 ng/ml
Lamotrigine	4.225	711182	29187.52	87.0	2221.45	1634822	876.5163 ng/ml
Lorazepam	5.706	447308	20704.83	52.6	322.85	343414	94.6003 ng/ml
Methadone	5.611	2930521	6372.61	51.2	2927.63	1078485	95.0606 ng/ml
Methamphetamine	3.168	3140069	25667.53	37.0	37876.81	1067415	104.5217 ng/ml
Metoprolol	4.272	382572	26041.34	102.3	3313.55	1607225	105.5083 ng/ml
Mitragynine	5.191	541363	769659.51	34.5	869.22	1078485	96.4669 ng/ml
Morphine	1.220	98809	1078.85	44.9	423.69	19731	95.8103 ng/ml
Nordiazepam	5.853	714601	11377.97	56.1	1164.59	211340	101.4131 ng/ml
Norfentanyl	4.028	281558	8734.09	36.8	∞	1016020	9.8394 ng/ml
Norhydrocodone	3.009	148085	823.16	41.2	124.96	97034	103.7774 ng/ml
Noroxycodone	2.846	375791	1757.31	49.6	817.21	124513	99.5057 ng/ml
Oxycodone	2.777	1029395	890.80	28.9	894.96	425152	101.0315 ng/ml
Pseudoephedrine	2.525	3274073	919.51	16.4	3010.91	1634822	94.9951 ng/ml
Quetiapine	5.519	2224859	1506.35	57.4	1953935.09	300398	98.6205 ng/ml
Trazodone	5.130	2735810	3368961.30	64.2	75403.71	963192	102.5242 ng/ml
Xylazine	4.028	1183466	74704.90	47.5	2727.02	502080	99.4737 ng/ml

AM #28 Multi-Drug Quant. Results



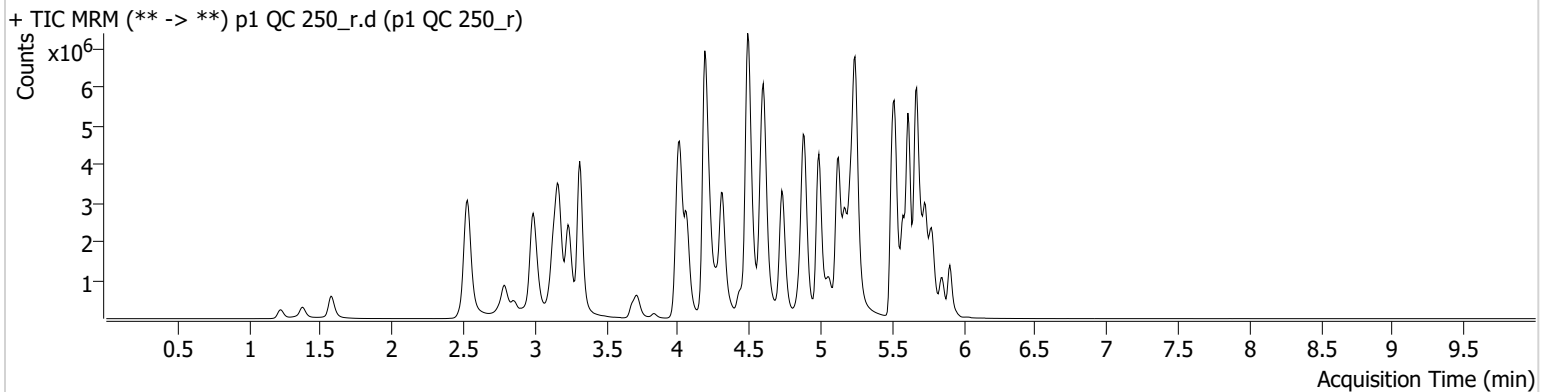
Batch results D:\MassHunter\Data\2024\AM 27 28\070824 AM 27 28 CS\QuantResults\AM 28 Cases.batch.bin
Calibration Last Update 7/11/2024 12:54:11 PM

Instrument Falco (069901) **Data File** p1 QC 250_r.d
Type QC **Sample** p1 QC 250_r
Acq. Method AM 28 MDQ P1.m **Operator** Celena Shrum
Sample Position P2-C2 **Comment**
Injection Volume 2
Acq. Date-Time 7/9/2024 1:45:29 PM
Sample Info.

Only drugs and concentrations listed on the laboratory report itself are appropriate to be used for interpretation purposes. Any drugs or values included in the notes but not included on the report are used by laboratory personnel to make determinations/reach conclusions within the confines of the methods.

Bracket QC for reinjects

Sample Chromatogram



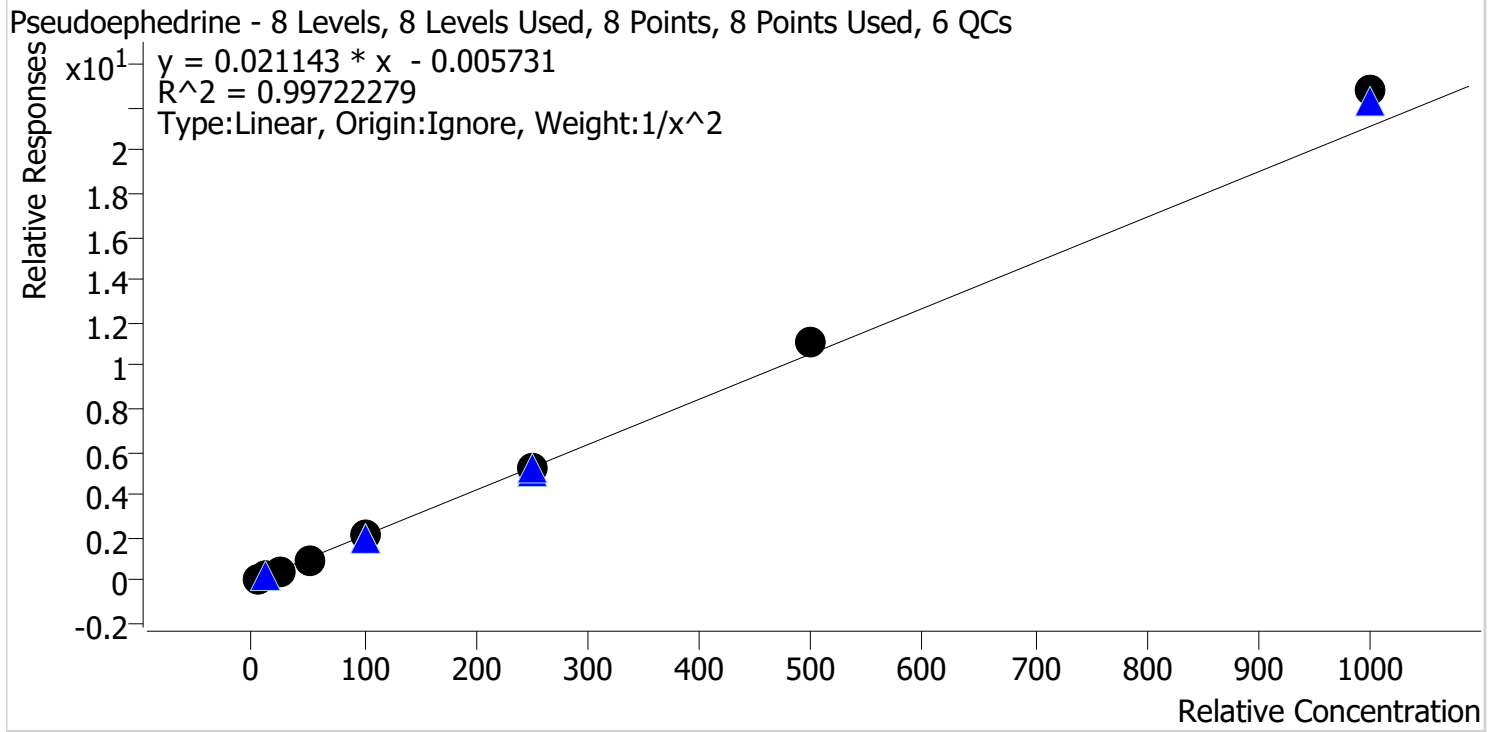
Name	RT	Resp.	S/N	Ratio	S/N	ISTD Resp.	Final Conc.
6-MAM	3.082	81848	∞	70.5	2403.15	94499	25.7412 ng/ml
Amphetamine	2.992	5602007	56557.34	48.2	92423.09	410384	193.1425 ng/ml
Benzoylcegonine	3.835	134477	8743.38	36.7	396.37	18392	246.9118 ng/ml
Bromazolam	5.766	1023033	17812.75	121.6	917157.79	114709	238.7443 ng/ml
Cocaine	4.216	2919772	1369806.64	51.9	298683.84	944541	246.4967 ng/ml
Codeine	2.535	303988	1648.53	96.9	8208.93	63094	251.7658 ng/ml
Dextromethorphan	5.223	2231483	19223.77	79.8	1980.14	389017	236.5212 ng/ml
Duloxetine	5.606	235731	18480.37	14.3	2019.41	46974	259.4012 ng/ml
EDDP	5.215	2691878	629.89	41.3	532.90	479134	245.1037 ng/ml
Fentanyl	5.055	439673	21110.34	77.7	412282.87	973017	23.7839 ng/ml
Fluorofentanyl	5.110	998438	14073.25	41.7	13915.37	8185	27.1935 ng/ml
Hydrocodone	2.975	1614886	∞	36.9	611.46	299438	260.8775 ng/ml
Hydroxyzine	5.663	4618330	1625981.92	75.3	522032.45	389017	253.1963 ng/ml
Lamotrigine	4.225	1069183	40072.92	87.9	42272.95	1414821	1552.1326 ng/ml
Lorazepam	5.706	569368	388.66	53.2	2156.85	191519	216.8988 ng/ml
Methadone	5.611	6756714	3363.23	51.0	3115.37	969121	242.9603 ng/ml
Methamphetamine	3.168	7308625	113154.40	35.9	58687.29	1088733	249.1685 ng/ml
Metoprolol	4.272	778532	918271.17	104.1	4399.48	1446645	239.5711 ng/ml
Mitragynine	5.191	1184282	4017.77	34.5	398793.23	969121	234.3972 ng/ml
Morphine	1.220	227218	2732.13	45.9	690.00	20784	210.4065 ng/ml
Nordiazepam	5.853	1304289	1064.84	56.3	835.43	159808	245.0163 ng/ml
Norfentanyl	4.028	525282	46377.10	38.3	2552.85	736641	25.2218 ng/ml
Norhydrocodone	3.016	391881	∞	39.0	359.11	92236	286.8903 ng/ml
Noroxycodone	2.852	850397	9670.29	49.5	7765.36	113588	247.2400 ng/ml
Oxycodone	2.784	2534183	1088.15	28.8	4462.43	424642	249.1944 ng/ml
Pseudoephedrine	2.532	7335461	163.00	16.0	336750.65	1414821	245.4981 ng/ml
Quetiapine	5.519	4687094	1814.84	59.3	668780.44	275928	226.3326 ng/ml
Trazodone	5.123	6195310	5172877.35	68.2	8733542.78	949983	236.7022 ng/ml
Xylazine	4.028	2769712	286187.09	48.7	11030.87	461510	253.0284 ng/ml

CS



AM #28 Multi-Drug Quant. Calibration Curve Report

Batch results D:\MassHunter\Data\2024\AM 27 28\070824 AM 27 28 CS\QuantResults\AM 28 Cases.batch.bin
Last Cal. Update 7/11/2024 12:54 PM
Analyst Name ISP\Datator
Analyte Pseudoephedrine **Internal Standard** Pseudoephedrine-D3



Sample	Level	Enabled	Expected Concentration	Final Concentration	Accuracy
p1 Cal 1-5ng	1	✓	5.0	5.1	102.9
p1 Cal 2-10ng	2	✓	10.0	9.7	97.1
p1 Cal 3 -25ng	3	✓	25.0	23.9	95.7
p1 Cal 4-50ng	4	✓	50.0	47.5	94.9
p1 Cal 5-100ng	5	✓	100.0	98.0	98.0
p1 Cal 6-250ng	6	✓	250.0	248.0	99.2
p1 Cal 7-500ng	7	✓	500.0	522.0	104.4
p1 Cal 8-1000ng	8	✓	1000.0	1078.6	107.9

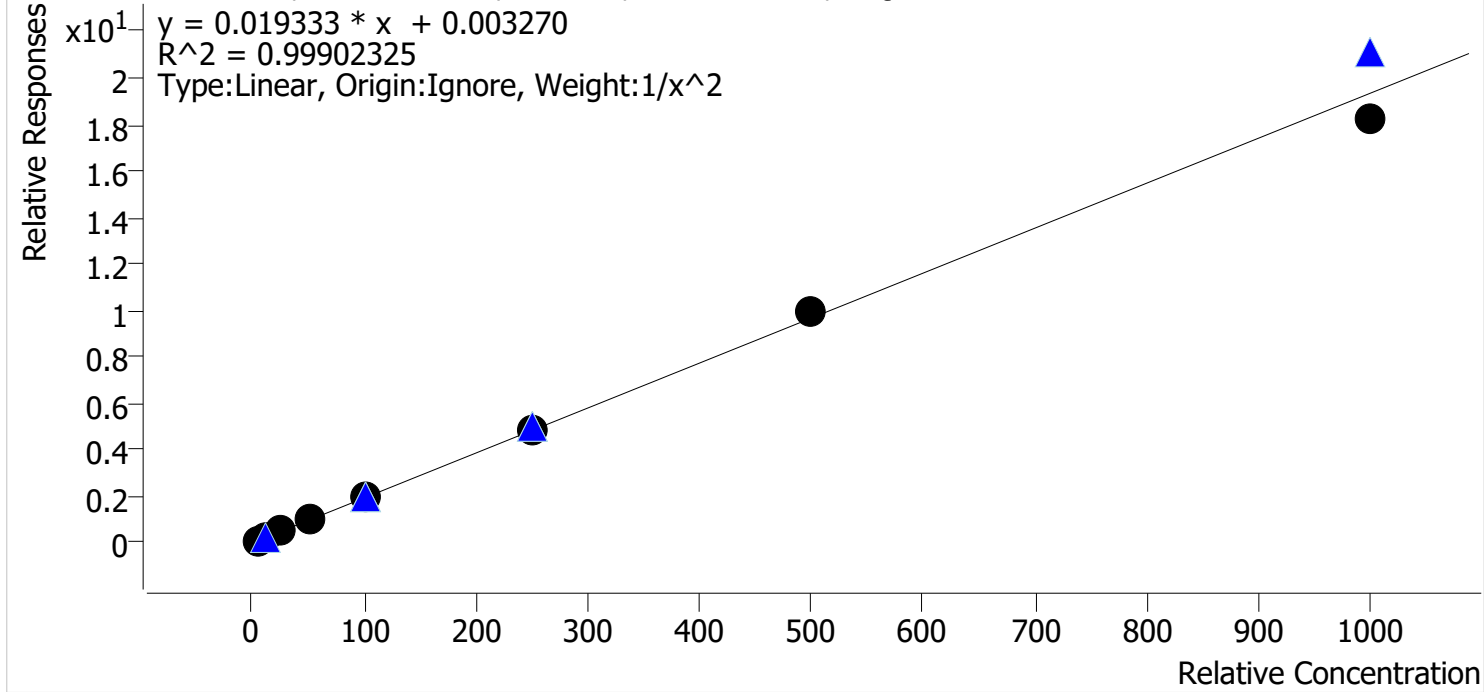
CS



AM #28 Multi-Drug Quant. Calibration Curve Report

Batch results D:\MassHunter\Data\2024\AM 27 28\070824 AM 27 28 CS\QuantResults\AM 28 Cases.batch.bin
Last Cal. Update 7/11/2024 12:54 PM
Analyst Name ISP\Datastor
Analyte Duloxetine **Internal Standard** Duloxetine-D3

Duloxetine - 8 Levels, 8 Levels Used, 8 Points, 8 Points Used, 6 QCs



Sample	Level	Enabled	Expected Concentration	Final Concentration	Accuracy
p1 Cal 1-5ng	1	✓	5.0	5.0	99.1
p1 Cal 2-10ng	2	✓	10.0	10.2	101.9
p1 Cal 3 -25ng	3	✓	25.0	24.9	99.7
p1 Cal 4-50ng	4	✓	50.0	49.5	99.1
p1 Cal 5-100ng	5	✓	100.0	101.6	101.6
p1 Cal 6-250ng	6	✓	250.0	254.8	101.9
p1 Cal 7-500ng	7	✓	500.0	512.4	102.5
p1 Cal 8-1000ng	8	✓	1000.0	942.0	94.2

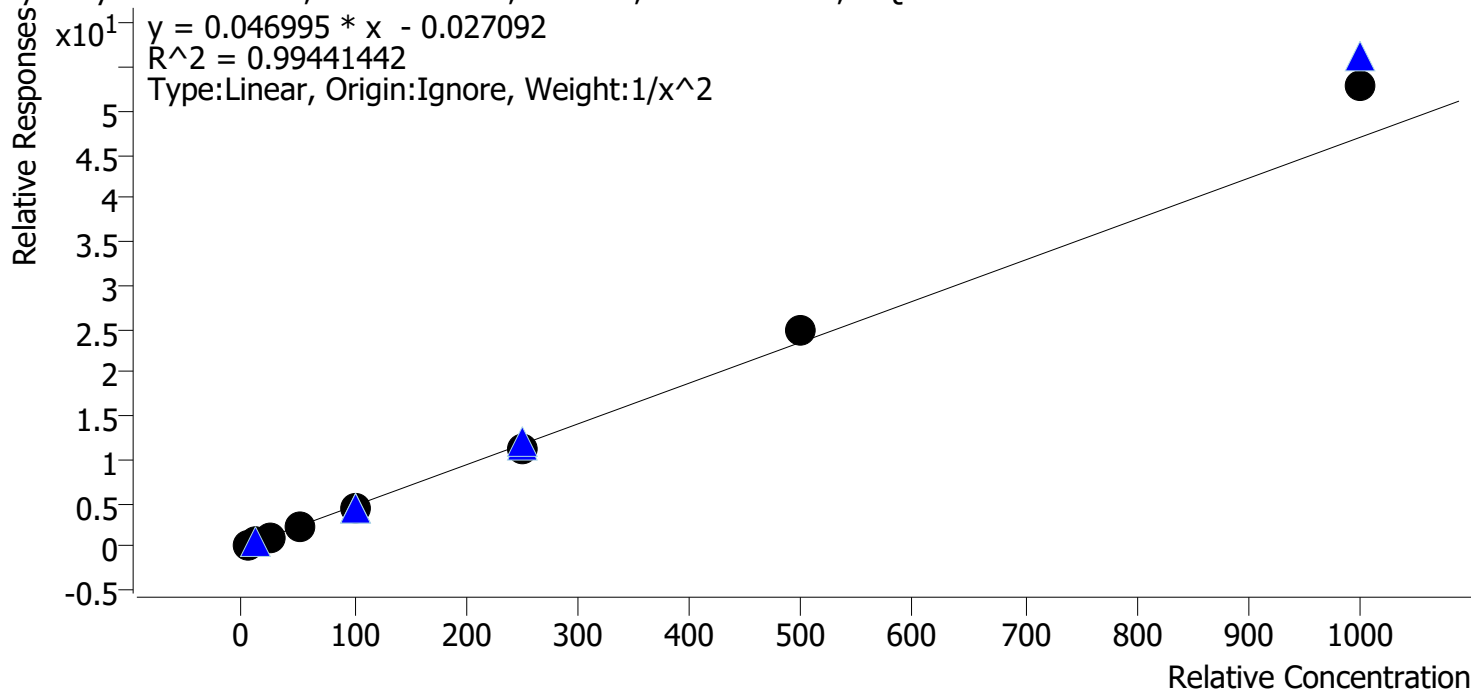
CS



AM #28 Multi-Drug Quant. Calibration Curve Report

Batch results D:\MassHunter\Data\2024\AM 27 28\070824 AM 27 28 CS\QuantResults\AM 28 Cases.batch.bin
Last Cal. Update 7/11/2024 12:54 PM
Analyst Name ISP\Datastor
Analyte Hydroxyzine **Internal Standard** Dextromethorphan-D3

Hydroxyzine - 8 Levels, 8 Levels Used, 8 Points, 8 Points Used, 6 QCs



Sample	Level	Enabled	Expected Concentration	Final Concentration	Accuracy
p1 Cal 1-5ng	1	✓	5.0	5.1	102.5
p1 Cal 2-10ng	2	✓	10.0	9.8	98.5
p1 Cal 3 -25ng	3	✓	25.0	23.8	95.3
p1 Cal 4-50ng	4	✓	50.0	47.0	93.9
p1 Cal 5-100ng	5	✓	100.0	94.8	94.8
p1 Cal 6-250ng	6	✓	250.0	242.5	97.0
p1 Cal 7-500ng	7	✓	500.0	526.0	105.2
p1 Cal 8-1000ng	8	✓	1000.0	1128.3	112.8

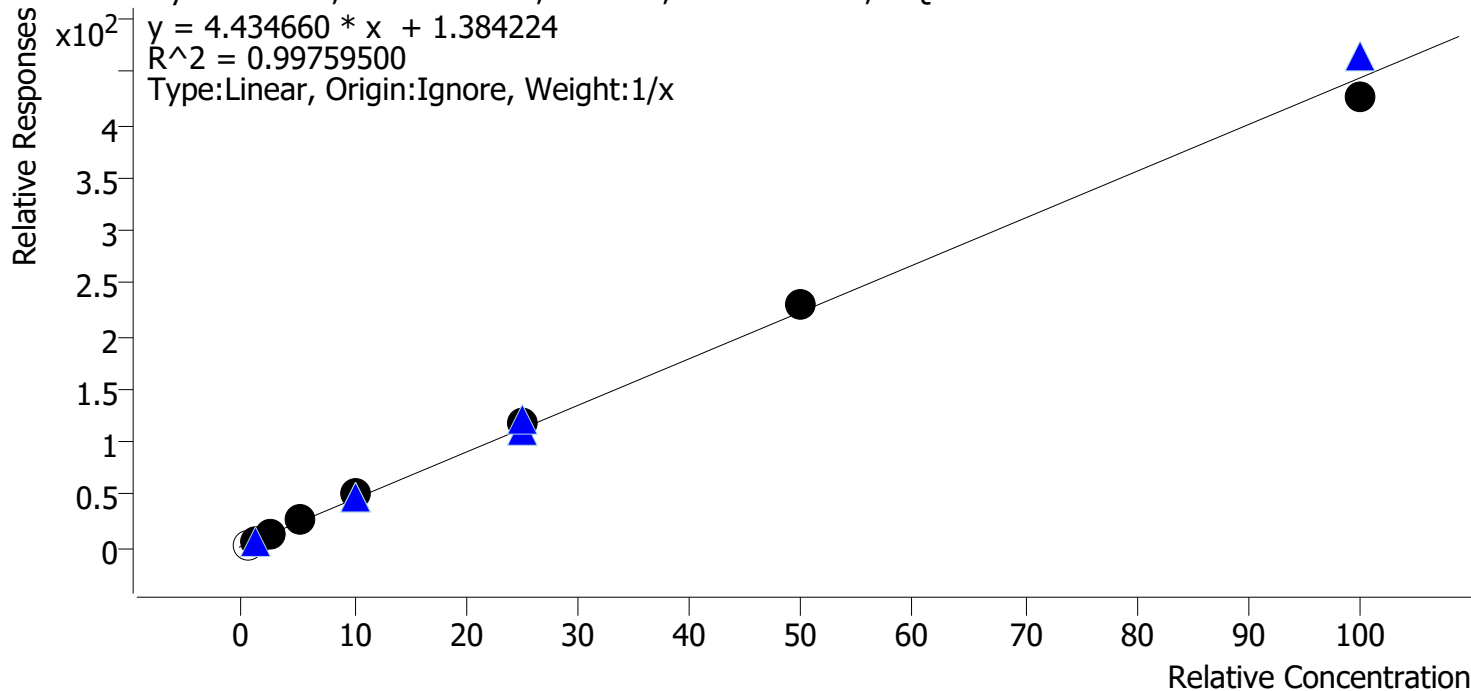
CS



AM #28 Multi-Drug Quant. Calibration Curve Report

Batch results D:\MassHunter\Data\2024\AM 27 28\070824 AM 27 28 CS\QuantResults\AM 28 Cases.batch.bin
Last Cal. Update 7/11/2024 12:54 PM
Analyst Name ISP\Datastor
Analyte Fluorofentanyl **Internal Standard** Fluorofentanyl-D5

Fluorofentanyl - 8 Levels, 7 Levels Used, 8 Points, 7 Points Used, 6 QCs



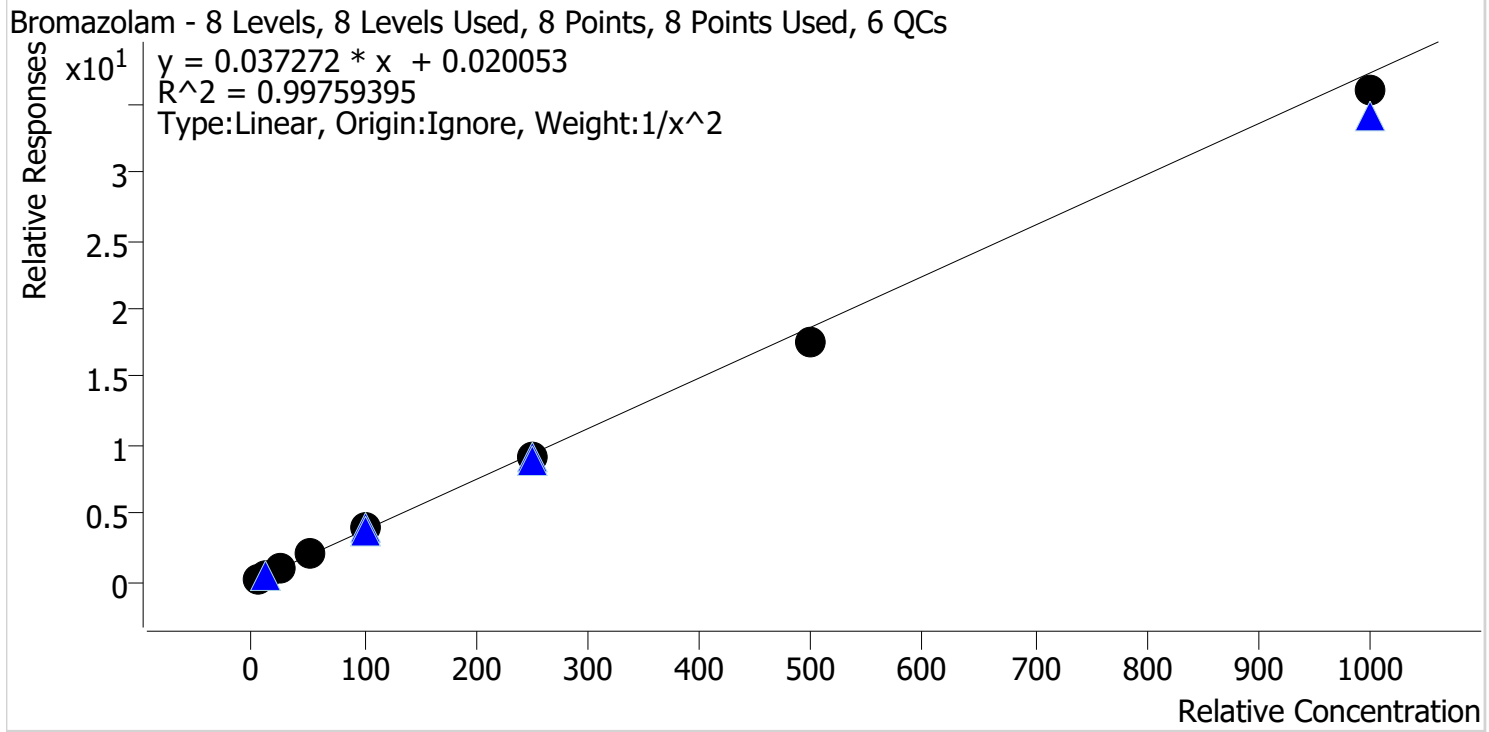
Sample	Level	Enabled	Expected Concentration	Final Concentration	Accuracy
p1 Cal 1-5ng	1	x	0.5	0.2	48.1
p1 Cal 2-10ng	2	✓	1.0	0.8	82.2
p1 Cal 3 -25ng	3	✓	2.5	2.4	97.5
p1 Cal 4-50ng	4	✓	5.0	5.3	106.0
p1 Cal 5-100ng	5	✓	10.0	11.0	110.4
p1 Cal 6-250ng	6	✓	25.0	26.2	104.7
p1 Cal 7-500ng	7	✓	50.0	51.5	103.0
p1 Cal 8-1000ng	8	✓	100.0	96.2	96.2

CS



AM #28 Multi-Drug Quant. Calibration Curve Report

Batch results D:\MassHunter\Data\2024\AM 27 28\070824 AM 27 28 CS\QuantResults\AM 28 Cases.batch.bin
Last Cal. Update 7/11/2024 12:54 PM
Analyst Name ISP\Datastor
Analyte Bromazolam **Internal Standard** Bromazolam-D5



Sample	Level	Enabled	Expected Concentration	Final Concentration	Accuracy
p1 Cal 1-5ng	1	✓	5.0	4.9	97.3
p1 Cal 2-10ng	2	✓	10.0	10.3	102.9
p1 Cal 3 -25ng	3	✓	25.0	26.0	104.2
p1 Cal 4-50ng	4	✓	50.0	51.8	103.5
p1 Cal 5-100ng	5	✓	100.0	104.7	104.7
p1 Cal 6-250ng	6	✓	250.0	242.7	97.1
p1 Cal 7-500ng	7	✓	500.0	469.1	93.8
p1 Cal 8-1000ng	8	✓	1000.0	965.2	96.5

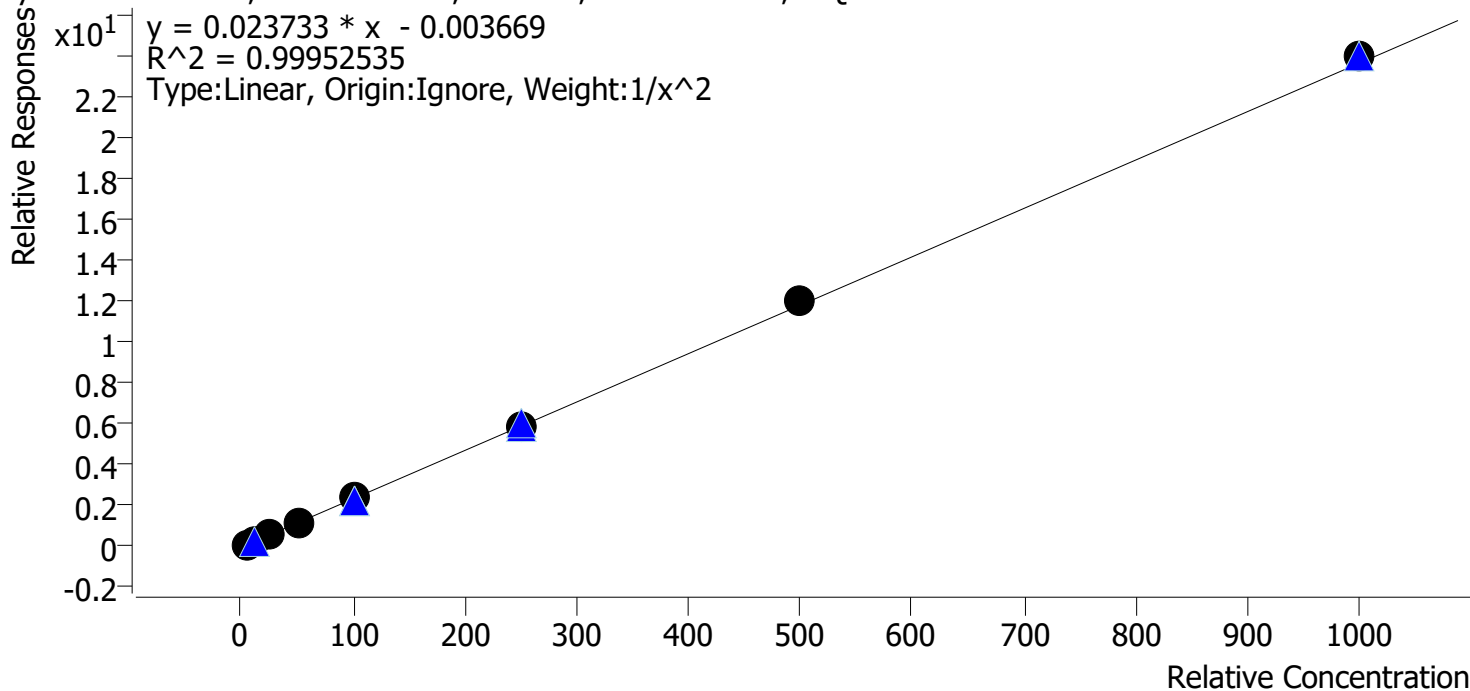
CS



AM #28 Multi-Drug Quant. Calibration Curve Report

Batch results D:\MassHunter\Data\2024\AM 27 28\070824 AM 27 28 CS\QuantResults\AM 28 Cases.batch.bin
Last Cal. Update 7/11/2024 12:54 PM
Analyst Name ISP\Datastor
Analyte Xylazine **Internal Standard** Xylanzine-D6

Xylazine - 8 Levels, 8 Levels Used, 8 Points, 8 Points Used, 6 QCs



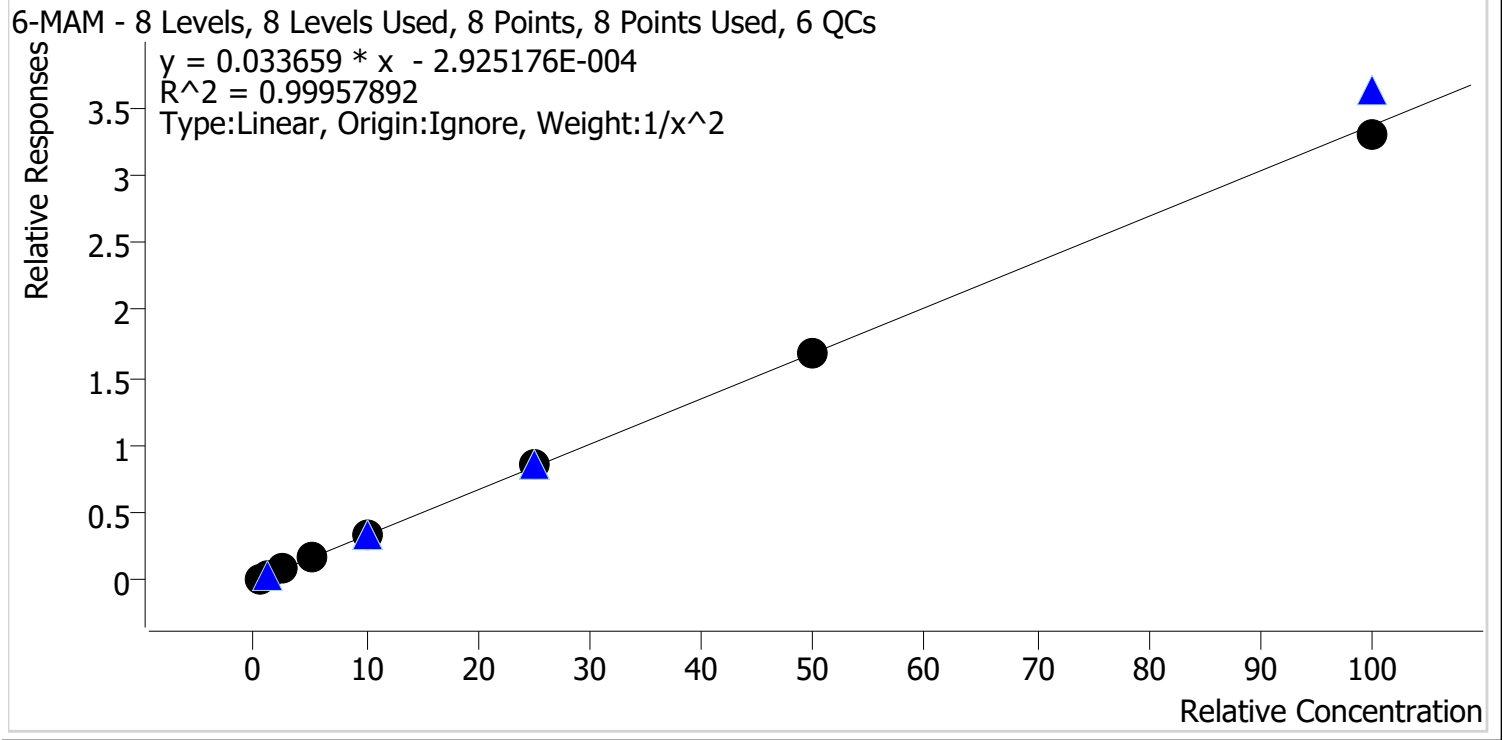
Sample	Level	Enabled	Expected Concentration	Final Concentration	Accuracy
p1 Cal 1-5ng	1	✓	5.0	5.1	101.3
p1 Cal 2-10ng	2	✓	10.0	9.9	99.0
p1 Cal 3 -25ng	3	✓	25.0	24.2	97.0
p1 Cal 4-50ng	4	✓	50.0	49.0	97.9
p1 Cal 5-100ng	5	✓	100.0	100.3	100.3
p1 Cal 6-250ng	6	✓	250.0	251.5	100.6
p1 Cal 7-500ng	7	✓	500.0	512.8	102.6
p1 Cal 8-1000ng	8	✓	1000.0	1013.8	101.4

CS



AM #28 Multi-Drug Quant. Calibration Curve Report

Batch results D:\MassHunter\Data\2024\AM 27 28\070824 AM 27 28 CS\QuantResults\AM 28 Cases.batch.bin
Last Cal. Update 7/11/2024 12:54 PM
Analyst Name ISP\Datastor
Analyte 6-MAM **Internal Standard** 6-MAM-D6



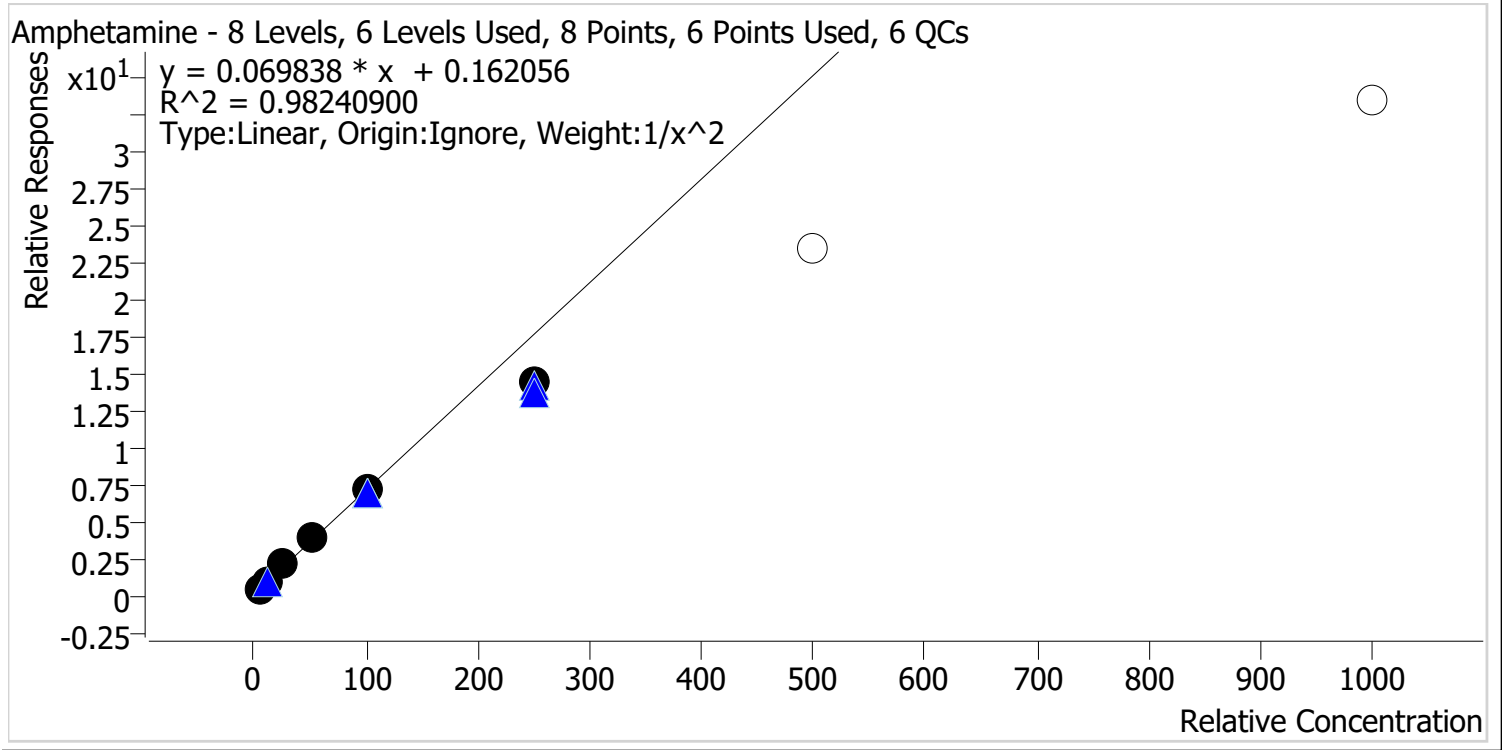
Sample	Level	Enabled	Expected Concentration	Final Concentration	Accuracy
p1 Cal 1-5ng	1	✓	0.5	0.5	99.8
p1 Cal 2-10ng	2	✓	1.0	1.0	101.2
p1 Cal 3 -25ng	3	✓	2.5	2.4	97.2
p1 Cal 4-50ng	4	✓	5.0	5.1	101.2
p1 Cal 5-100ng	5	✓	10.0	9.9	99.4
p1 Cal 6-250ng	6	✓	25.0	25.6	102.5
p1 Cal 7-500ng	7	✓	50.0	50.4	100.8
p1 Cal 8-1000ng	8	✓	100.0	97.9	97.9



CS

AM #28 Multi-Drug Quant. Calibration Curve Report

Batch results D:\MassHunter\Data\2024\AM 27 28\070824 AM 27 28 CS\QuantResults\AM 28 Cases.batch.bin
 Last Cal. Update 7/11/2024 12:54 PM
 Analyst Name ISP\Datastor
 Analyte Amphetamine Internal Standard Amphetamine-D11



Sample	Level	Enabled	Expected Concentration	Final Concentration	Accuracy
p1 Cal 1-5ng	1	✓	5.0	4.7	94.7
p1 Cal 2-10ng	2	✓	10.0	10.5	105.1
p1 Cal 3 -25ng	3	✓	25.0	28.1	112.6
p1 Cal 4-50ng	4	✓	50.0	53.0	106.0
p1 Cal 5-100ng	5	✓	100.0	100.2	100.2
p1 Cal 6-250ng	6	✓	250.0	203.5	81.4
p1 Cal 7-500ng	7	x	500.0	331.6	66.3
p1 Cal 8-1000ng	8	x	1000.0	475.6	47.6

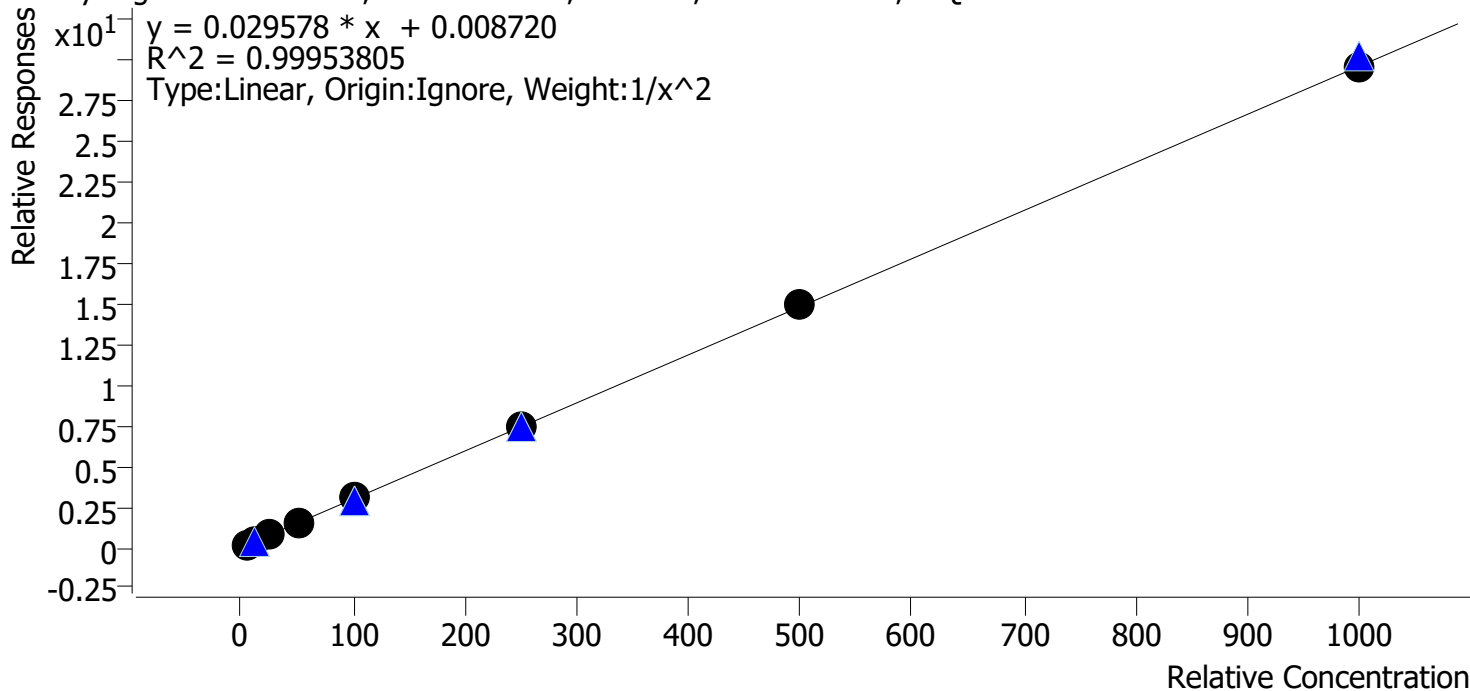


CS

AM #28 Multi-Drug Quant. Calibration Curve Report

Batch results D:\MassHunter\Data\2024\AM 27 28\070824 AM 27 28 CS\QuantResults\AM 28 Cases.batch.bin
Last Cal. Update 7/11/2024 12:54 PM
Analyst Name ISP\Datastor
Analyte Benzoylecgonine **Internal Standard** Benzoylecgonine-d8

Benzoylecgonine - 8 Levels, 8 Levels Used, 8 Points, 8 Points Used, 6 QCs



Sample	Level	Enabled	Expected Concentration	Final Concentration	Accuracy
p1 Cal 1-5ng	1	✓	5.0	5.1	101.5
p1 Cal 2-10ng	2	✓	10.0	9.8	98.2
p1 Cal 3 -25ng	3	✓	25.0	24.1	96.5
p1 Cal 4-50ng	4	✓	50.0	50.0	99.9
p1 Cal 5-100ng	5	✓	100.0	102.1	102.1
p1 Cal 6-250ng	6	✓	250.0	253.1	101.2
p1 Cal 7-500ng	7	✓	500.0	504.4	100.9
p1 Cal 8-1000ng	8	✓	1000.0	997.4	99.7

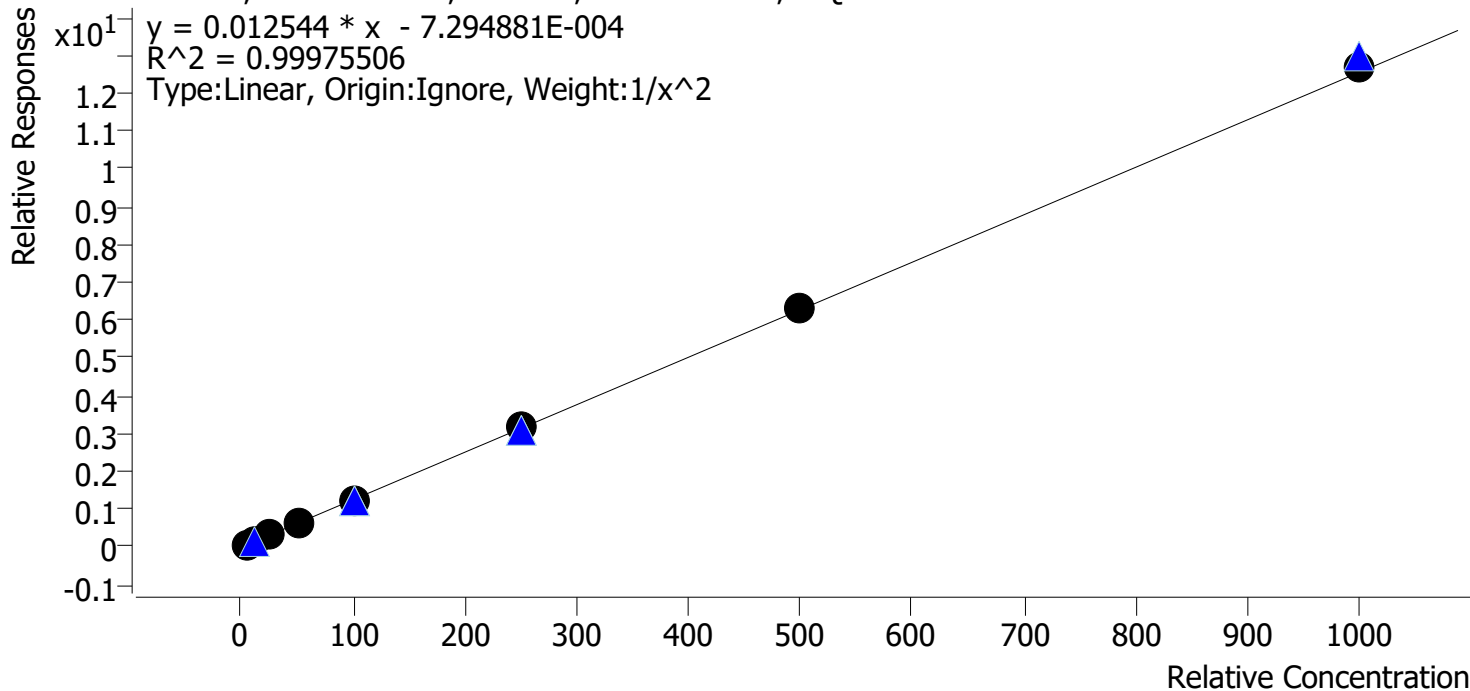
CS



AM #28 Multi-Drug Quant. Calibration Curve Report

Batch results D:\MassHunter\Data\2024\AM 27 28\070824 AM 27 28 CS\QuantResults\AM 28 Cases.batch.bin
Last Cal. Update 7/11/2024 12:54 PM
Analyst Name ISP\Datastor
Analyte Cocaine **Internal Standard** Cocaine-D3

Cocaine - 8 Levels, 8 Levels Used, 8 Points, 8 Points Used, 6 QCs



Sample	Level	Enabled	Expected Concentration	Final Concentration	Accuracy
p1 Cal 1-5ng	1	✓	5.0	5.1	101.2
p1 Cal 2-10ng	2	✓	10.0	9.9	98.5
p1 Cal 3 -25ng	3	✓	25.0	24.6	98.3
p1 Cal 4-50ng	4	✓	50.0	49.5	99.1
p1 Cal 5-100ng	5	✓	100.0	99.1	99.1
p1 Cal 6-250ng	6	✓	250.0	253.6	101.4
p1 Cal 7-500ng	7	✓	500.0	505.6	101.1
p1 Cal 8-1000ng	8	✓	1000.0	1012.8	101.3

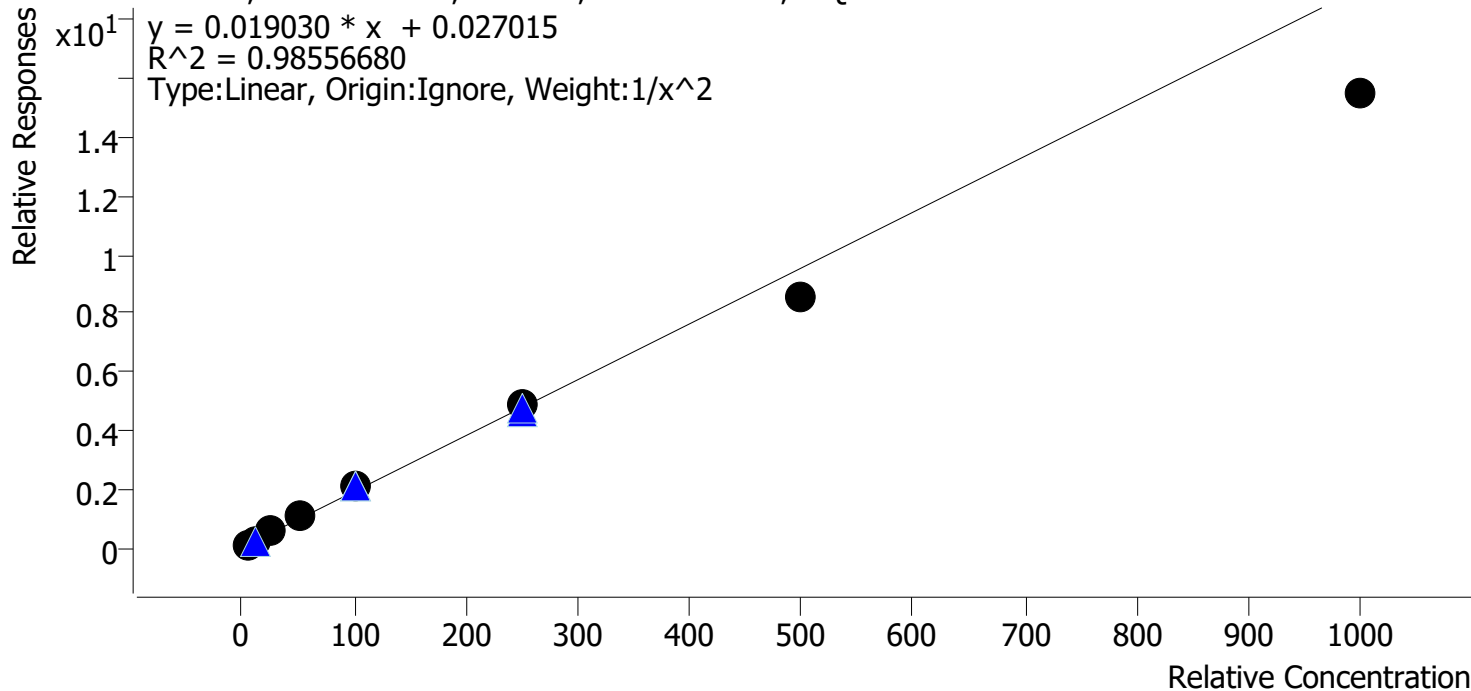
CS



AM #28 Multi-Drug Quant. Calibration Curve Report

Batch results D:\MassHunter\Data\2024\AM 27 28\070824 AM 27 28 CS\QuantResults\AM 28 Cases.batch.bin
Last Cal. Update 7/11/2024 12:54 PM
Analyst Name ISP\Datastor
Analyte Codeine **Internal Standard** Codeine-D6

Codeine - 8 Levels, 8 Levels Used, 8 Points, 8 Points Used, 6 QCs



Sample	Level	Enabled	Expected Concentration	Final Concentration	Accuracy
p1 Cal 1-5ng	1	✓	5.0	4.7	94.1
p1 Cal 2-10ng	2	✓	10.0	10.6	105.6
p1 Cal 3 -25ng	3	✓	25.0	27.3	109.4
p1 Cal 4-50ng	4	✓	50.0	55.0	110.1
p1 Cal 5-100ng	5	✓	100.0	106.8	106.8
p1 Cal 6-250ng	6	✓	250.0	258.3	103.3
p1 Cal 7-500ng	7	✓	500.0	446.8	89.4
p1 Cal 8-1000ng	8	✓	1000.0	813.8	81.4

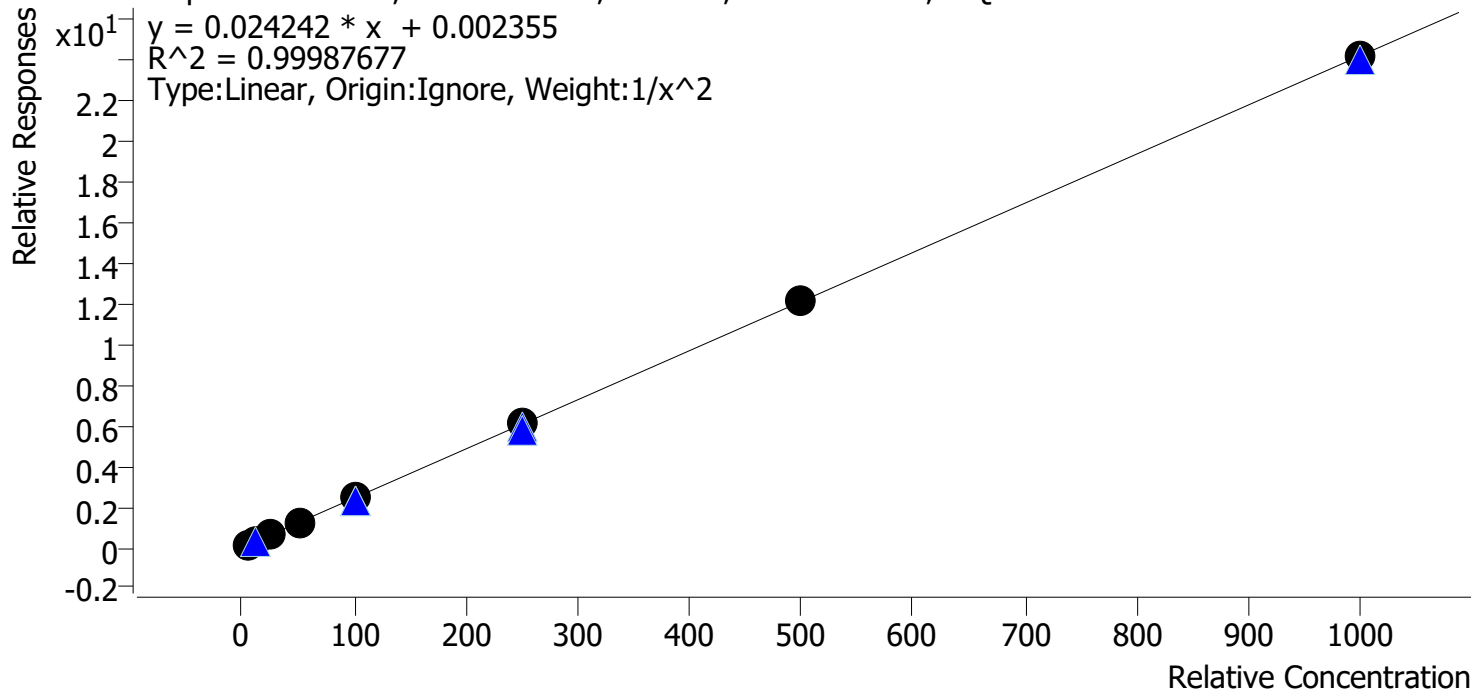
CS



AM #28 Multi-Drug Quant. Calibration Curve Report

Batch results D:\MassHunter\Data\2024\AM 27 28\070824 AM 27 28 CS\QuantResults\AM 28 Cases.batch.bin
Last Cal. Update 7/11/2024 12:54 PM
Analyst Name ISP\Datastor
Analyte Dextromethorphan **Internal Standard** Dextromethorphan-D3

Dextromethorphan - 8 Levels, 8 Levels Used, 8 Points, 8 Points Used, 6 QCs



Sample	Level	Enabled	Expected Concentration	Final Concentration	Accuracy
p1 Cal 1-5ng	1	✓	5.0	5.0	100.7
p1 Cal 2-10ng	2	✓	10.0	9.9	99.2
p1 Cal 3 -25ng	3	✓	25.0	24.6	98.5
p1 Cal 4-50ng	4	✓	50.0	49.6	99.2
p1 Cal 5-100ng	5	✓	100.0	100.5	100.5
p1 Cal 6-250ng	6	✓	250.0	253.0	101.2
p1 Cal 7-500ng	7	✓	500.0	504.0	100.8
p1 Cal 8-1000ng	8	✓	1000.0	998.5	99.8

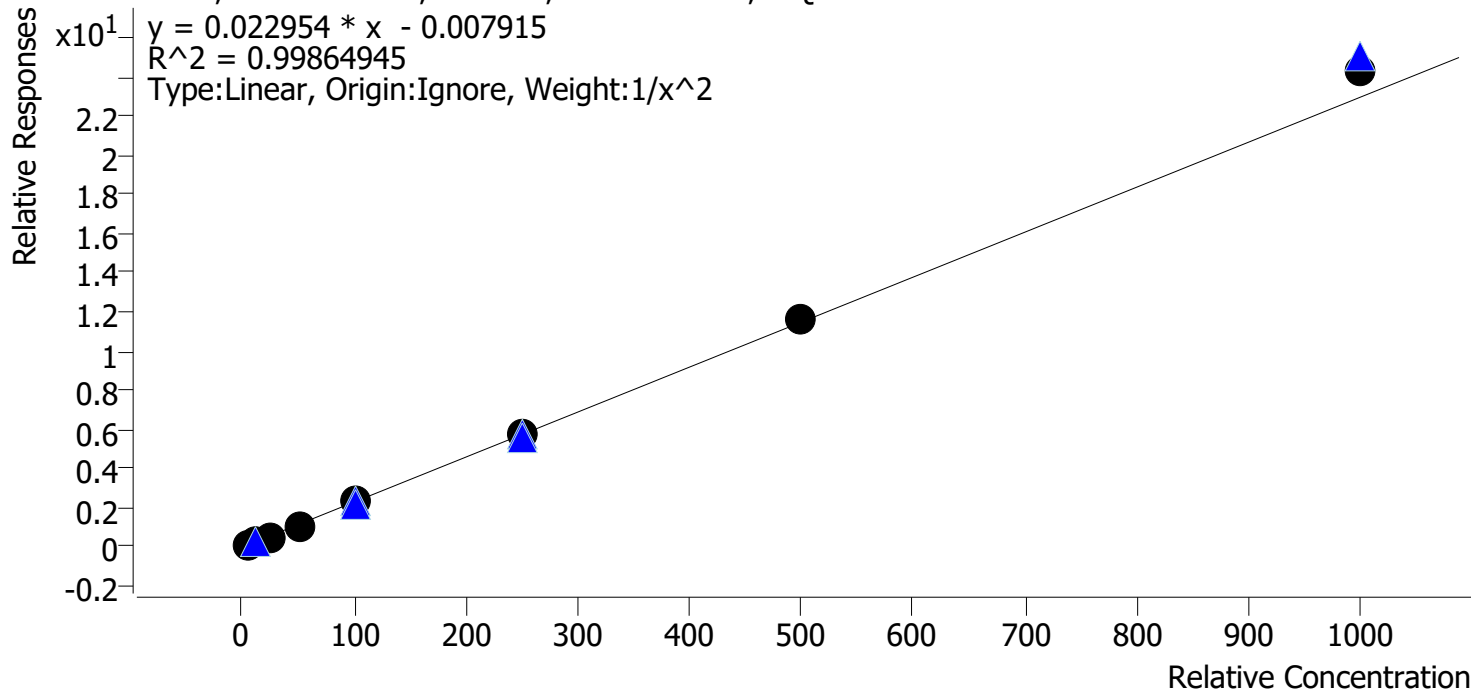


CS

AM #28 Multi-Drug Quant. Calibration Curve Report

Batch results D:\MassHunter\Data\2024\AM 27 28\070824 AM 27 28 CS\QuantResults\AM 28 Cases.batch.bin
 Last Cal. Update 7/11/2024 12:54 PM
 Analyst Name ISP\Datastor
 Analyte EDDP Internal Standard EDDP-D3

EDDP - 8 Levels, 8 Levels Used, 8 Points, 8 Points Used, 6 QCs



Sample	Level	Enabled	Expected Concentration	Final Concentration	Accuracy
p1 Cal 1-5ng	1	✓	5.0	5.1	101.8
p1 Cal 2-10ng	2	✓	10.0	9.8	98.3
p1 Cal 3 -25ng	3	✓	25.0	24.2	96.9
p1 Cal 4-50ng	4	✓	50.0	48.3	96.5
p1 Cal 5-100ng	5	✓	100.0	98.9	98.9
p1 Cal 6-250ng	6	✓	250.0	249.5	99.8
p1 Cal 7-500ng	7	✓	500.0	507.4	101.5
p1 Cal 8-1000ng	8	✓	1000.0	1062.9	106.3

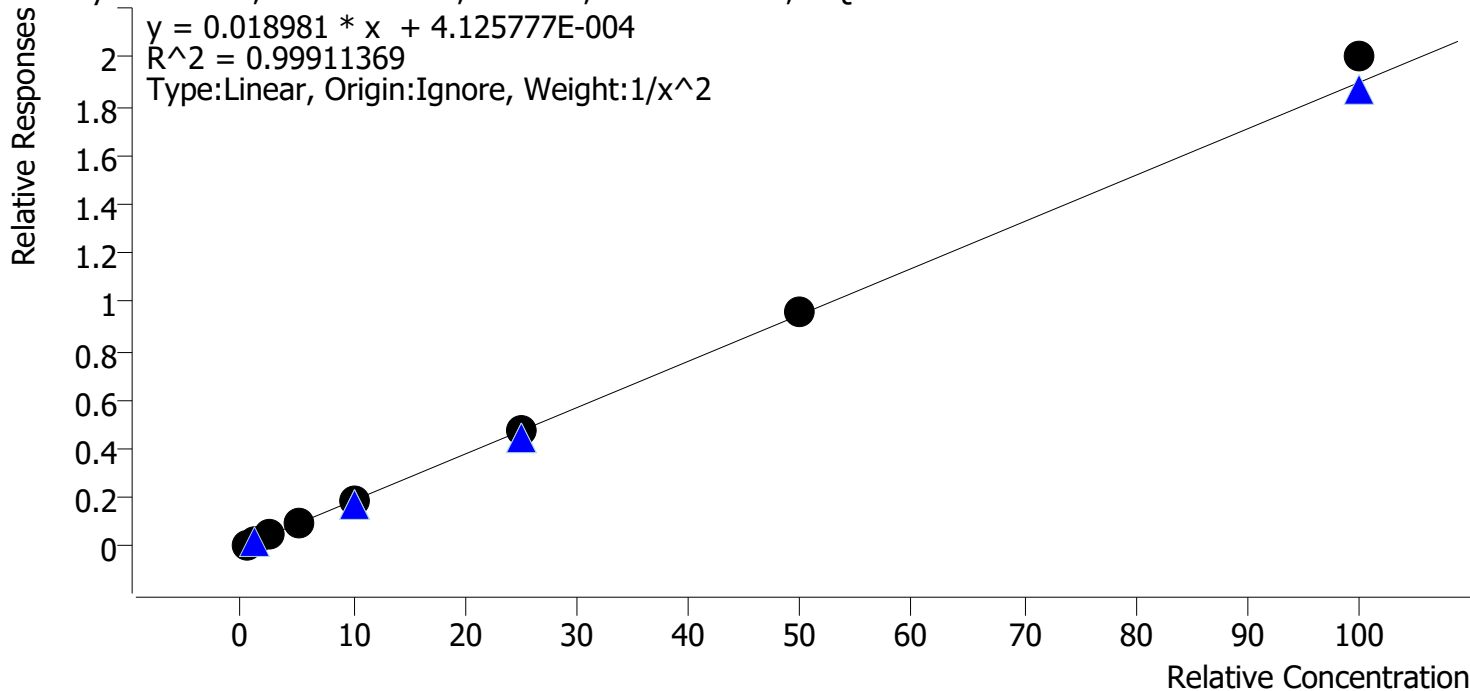
CS



AM #28 Multi-Drug Quant. Calibration Curve Report

Batch results D:\MassHunter\Data\2024\AM 27 28\070824 AM 27 28 CS\QuantResults\AM 28 Cases.batch.bin
Last Cal. Update 7/11/2024 12:54 PM
Analyst Name ISP\Datastor
Analyte Fentanyl **Internal Standard** Fentanyl-D5

Fentanyl - 8 Levels, 8 Levels Used, 8 Points, 8 Points Used, 6 QCs



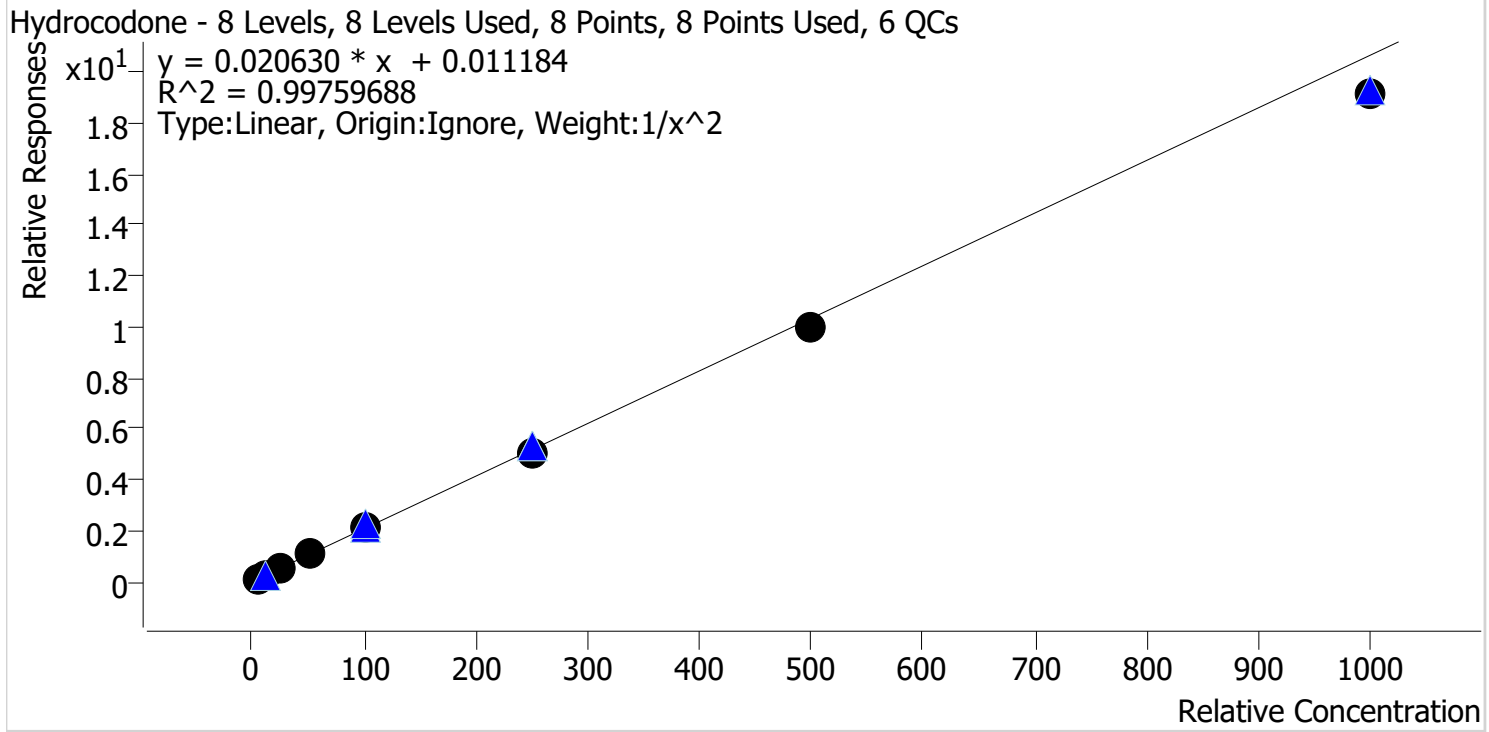
Sample	Level	Enabled	Expected Concentration	Final Concentration	Accuracy
p1 Cal 1-5ng	1	✓	0.5	0.5	101.2
p1 Cal 2-10ng	2	✓	1.0	1.0	98.8
p1 Cal 3 -25ng	3	✓	2.5	2.5	98.5
p1 Cal 4-50ng	4	✓	5.0	4.9	98.2
p1 Cal 5-100ng	5	✓	10.0	9.8	97.5
p1 Cal 6-250ng	6	✓	25.0	24.8	99.3
p1 Cal 7-500ng	7	✓	50.0	50.5	101.0
p1 Cal 8-1000ng	8	✓	100.0	105.6	105.6

CS



AM #28 Multi-Drug Quant. Calibration Curve Report

Batch results D:\MassHunter\Data\2024\AM 27 28\070824 AM 27 28 CS\QuantResults\AM 28 Cases.batch.bin
Last Cal. Update 7/11/2024 12:54 PM
Analyst Name ISP\Datastor
Analyte Hydrocodone **Internal Standard** Hydrocodone-D6



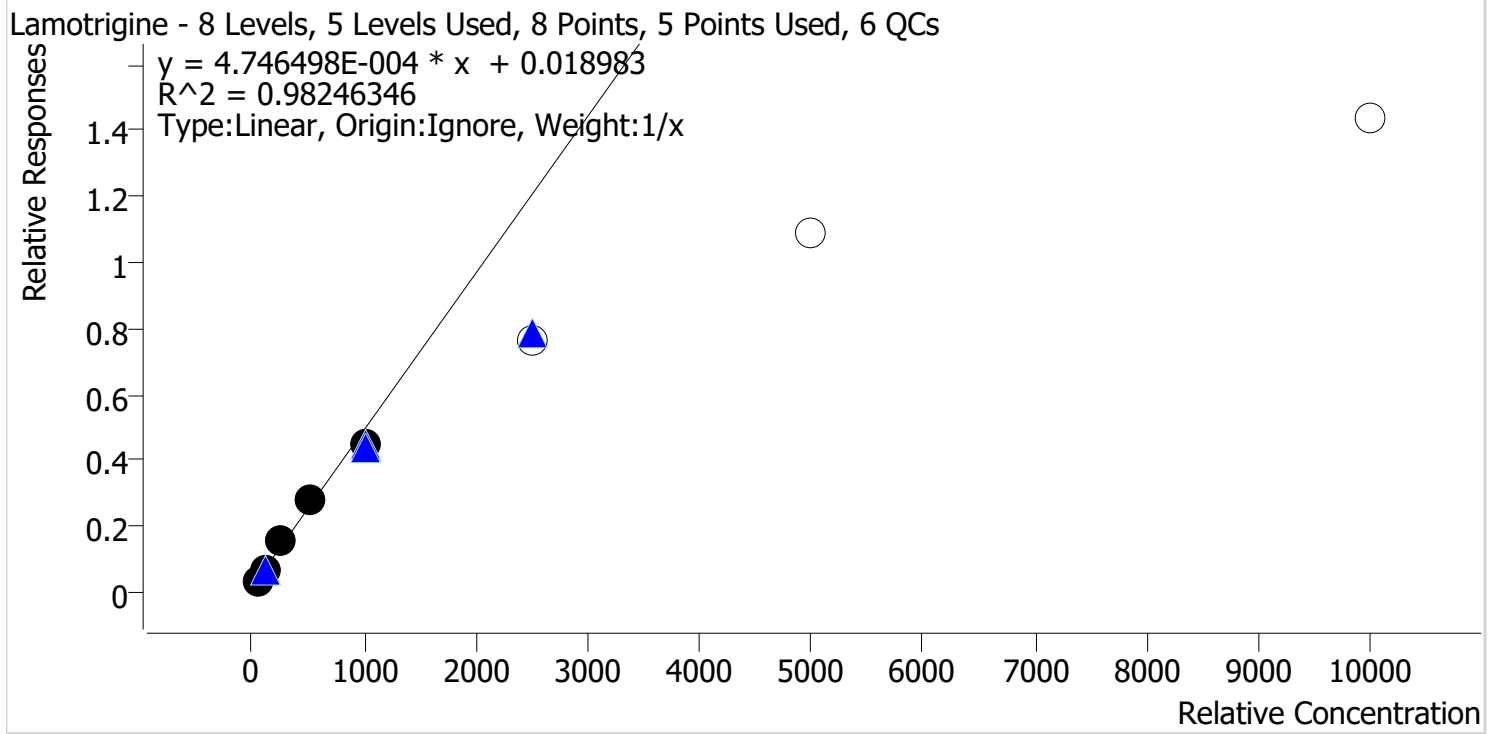
Sample	Level	Enabled	Expected Concentration	Final Concentration	Accuracy
p1 Cal 1-5ng	1	✓	5.0	4.9	97.7
p1 Cal 2-10ng	2	✓	10.0	10.2	102.2
p1 Cal 3 -25ng	3	✓	25.0	25.8	103.2
p1 Cal 4-50ng	4	✓	50.0	52.5	105.0
p1 Cal 5-100ng	5	✓	100.0	104.0	104.0
p1 Cal 6-250ng	6	✓	250.0	246.7	98.7
p1 Cal 7-500ng	7	✓	500.0	481.8	96.4
p1 Cal 8-1000ng	8	✓	1000.0	929.0	92.9

CS



AM #28 Multi-Drug Quant. Calibration Curve Report

Batch results D:\MassHunter\Data\2024\AM 27 28\070824 AM 27 28 CS\QuantResults\AM 28 Cases.batch.bin
Last Cal. Update 7/11/2024 12:54 PM
Analyst Name ISP\Datastor
Analyte Lamotrigine **Internal Standard** Pseudoephedrine-D3



Sample	Level	Enabled	Expected Concentration	Final Concentration	Accuracy
p1 Cal 1-5ng	1	✓	50.0	36.5	73.0
p1 Cal 2-10ng	2	✓	100.0	109.9	109.9
p1 Cal 3 -25ng	3	✓	250.0	291.5	116.6
p1 Cal 4-50ng	4	✓	500.0	543.3	108.7
p1 Cal 5-100ng	5	✓	1000.0	918.8	91.9
p1 Cal 6-250ng	6	x	2500.0	1579.9	63.2
p1 Cal 7-500ng	7	x	5000.0	2248.2	45.0
p1 Cal 8-1000ng	8	x	10000.0	2989.6	29.9

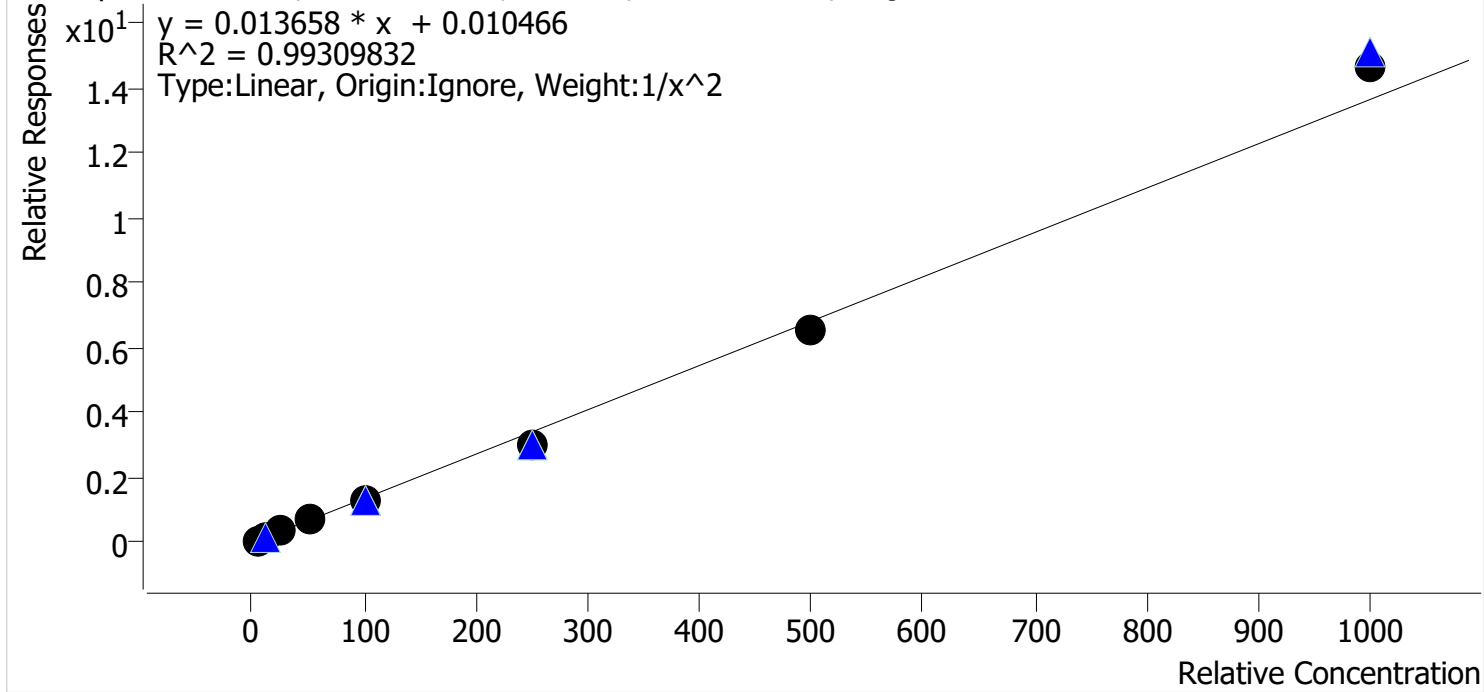
CS



AM #28 Multi-Drug Quant. Calibration Curve Report

Batch results D:\MassHunter\Data\2024\AM 27 28\070824 AM 27 28 CS\QuantResults\AM 28 Cases.batch.bin
Last Cal. Update 7/11/2024 12:54 PM
Analyst Name ISP\Datastor
Analyte Lorazepam **Internal Standard** Oxazepam-D5

Lorazepam - 8 Levels, 8 Levels Used, 8 Points, 8 Points Used, 6 QCs



Sample	Level	Enabled	Expected Concentration	Final Concentration	Accuracy
p1 Cal 1-5ng	1	✓	5.0	4.7	95.0
p1 Cal 2-10ng	2	✓	10.0	10.7	107.3
p1 Cal 3 -25ng	3	✓	25.0	26.8	107.2
p1 Cal 4-50ng	4	✓	50.0	52.0	104.1
p1 Cal 5-100ng	5	✓	100.0	94.4	94.4
p1 Cal 6-250ng	6	✓	250.0	222.3	88.9
p1 Cal 7-500ng	7	✓	500.0	480.0	96.0
p1 Cal 8-1000ng	8	✓	1000.0	1070.6	107.1

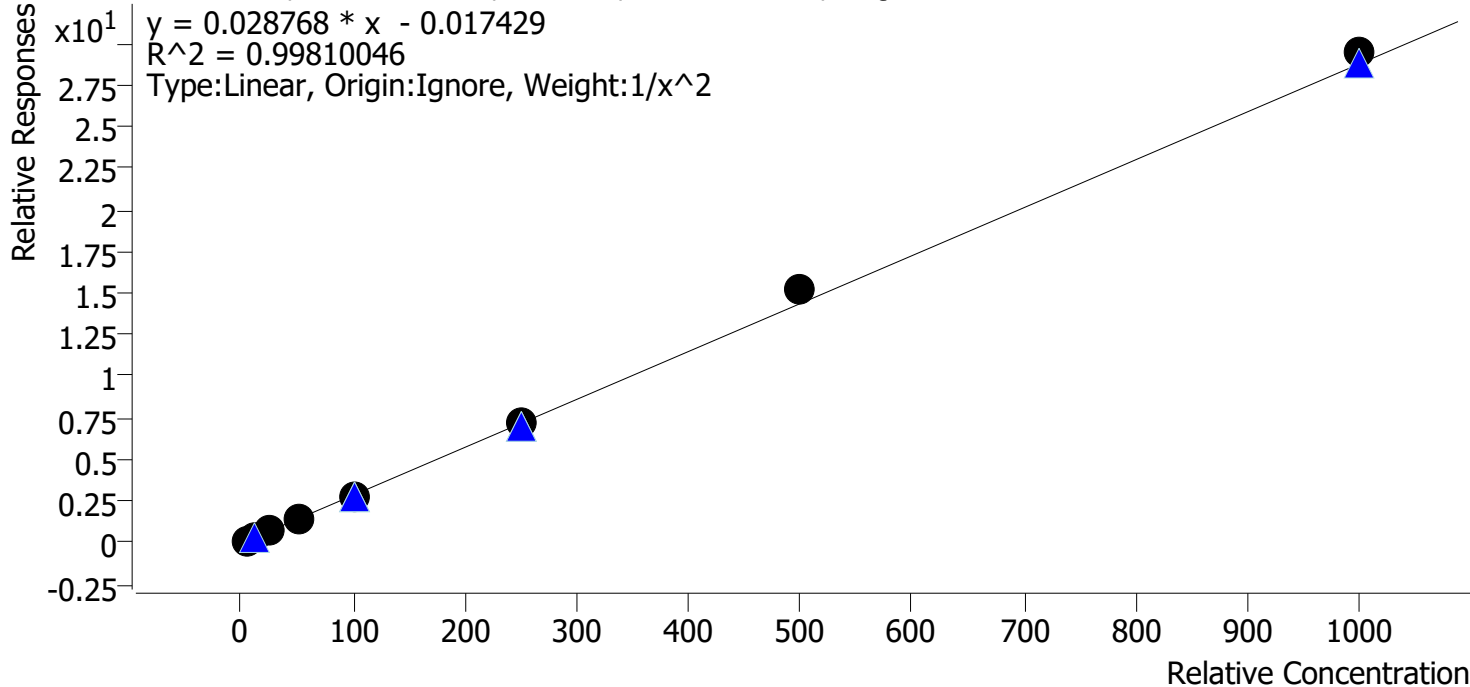
CS



AM #28 Multi-Drug Quant. Calibration Curve Report

Batch results D:\MassHunter\Data\2024\AM 27 28\070824 AM 27 28 CS\QuantResults\AM 28 Cases.batch.bin
Last Cal. Update 7/11/2024 12:54 PM
Analyst Name ISP\Datastor
Analyte Methadone **Internal Standard** Methadone-D9

Methadone - 8 Levels, 8 Levels Used, 8 Points, 8 Points Used, 6 QCs



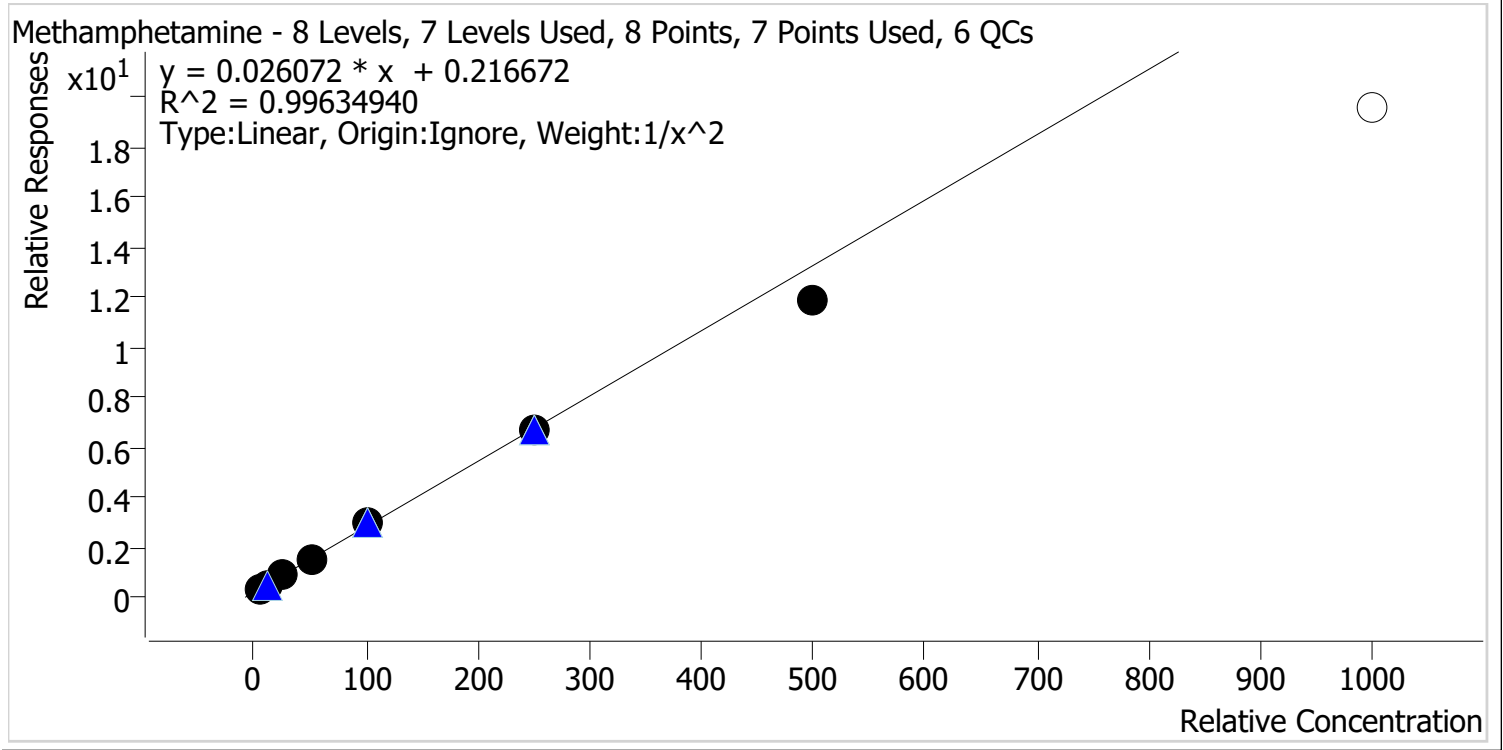
Sample	Level	Enabled	Expected Concentration	Final Concentration	Accuracy
p1 Cal 1-5ng	1	✓	5.0	5.1	101.9
p1 Cal 2-10ng	2	✓	10.0	9.9	98.7
p1 Cal 3 -25ng	3	✓	25.0	24.0	96.2
p1 Cal 4-50ng	4	✓	50.0	48.1	96.2
p1 Cal 5-100ng	5	✓	100.0	96.4	96.4
p1 Cal 6-250ng	6	✓	250.0	254.0	101.6
p1 Cal 7-500ng	7	✓	500.0	533.5	106.7
p1 Cal 8-1000ng	8	✓	1000.0	1023.7	102.4



CS

AM #28 Multi-Drug Quant. Calibration Curve Report

Batch results D:\MassHunter\Data\2024\AM 27 28\070824 AM 27 28 CS\QuantResults\AM 28 Cases.batch.bin
Last Cal. Update 7/11/2024 12:54 PM
Analyst Name ISP\Datastor
Analyte Methamphetamine **Internal Standard** Methamphetamine-D11



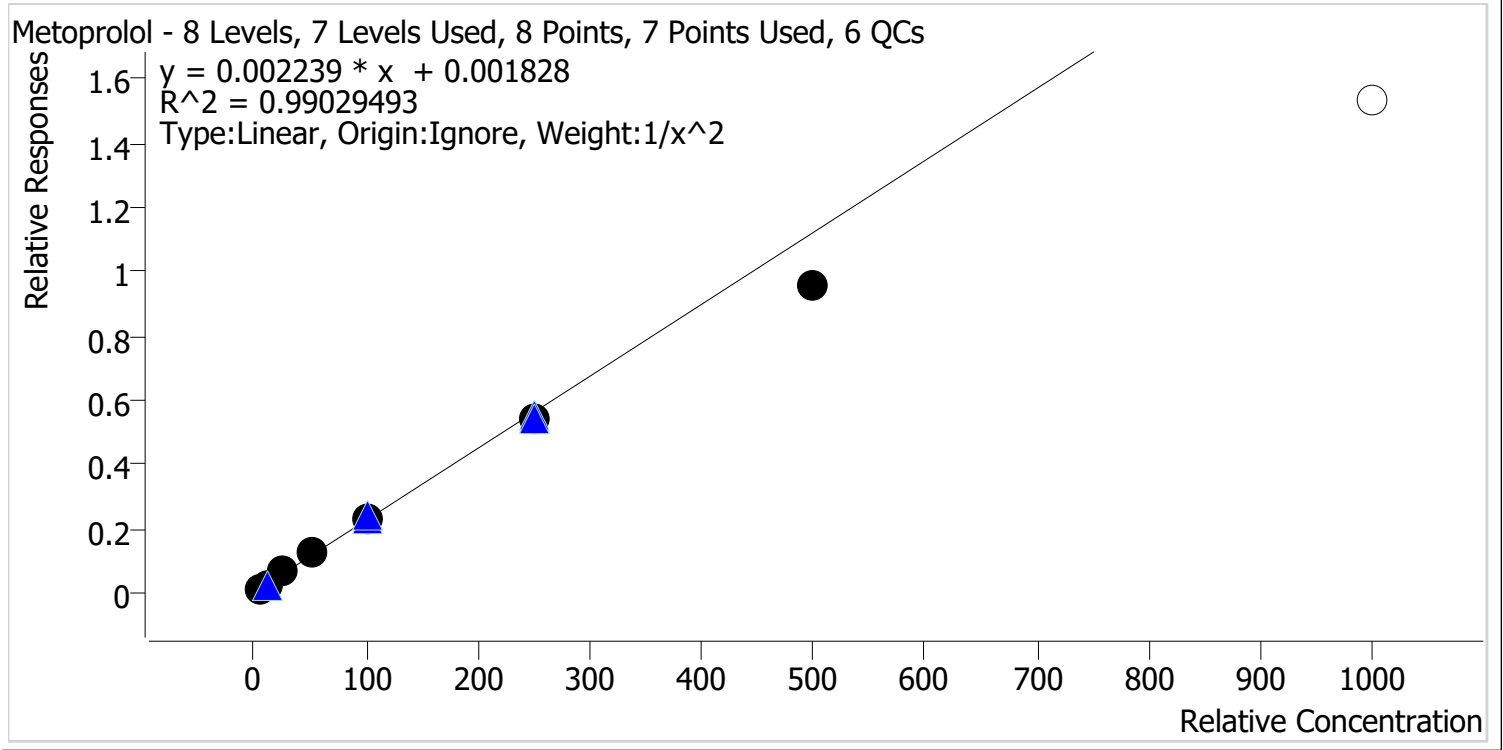
Sample	Level	Enabled	Expected Concentration	Final Concentration	Accuracy
p1 Cal 1-5ng	1	✓	5.0	4.9	98.3
p1 Cal 2-10ng	2	✓	10.0	10.1	100.7
p1 Cal 3 -25ng	3	✓	25.0	26.1	104.3
p1 Cal 4-50ng	4	✓	50.0	52.0	103.9
p1 Cal 5-100ng	5	✓	100.0	104.1	104.1
p1 Cal 6-250ng	6	✓	250.0	247.0	98.8
p1 Cal 7-500ng	7	✓	500.0	449.5	89.9
p1 Cal 8-1000ng	8	✗	1000.0	740.4	74.0



CS

AM #28 Multi-Drug Quant. Calibration Curve Report

Batch results D:\MassHunter\Data\2024\AM 27 28\070824 AM 27 28 CS\QuantResults\AM 28 Cases.batch.bin
Last Cal. Update 7/11/2024 12:54 PM
Analyst Name ISP\Datastor
Analyte Metoprolol **Internal Standard** Tramadol-13C-D3



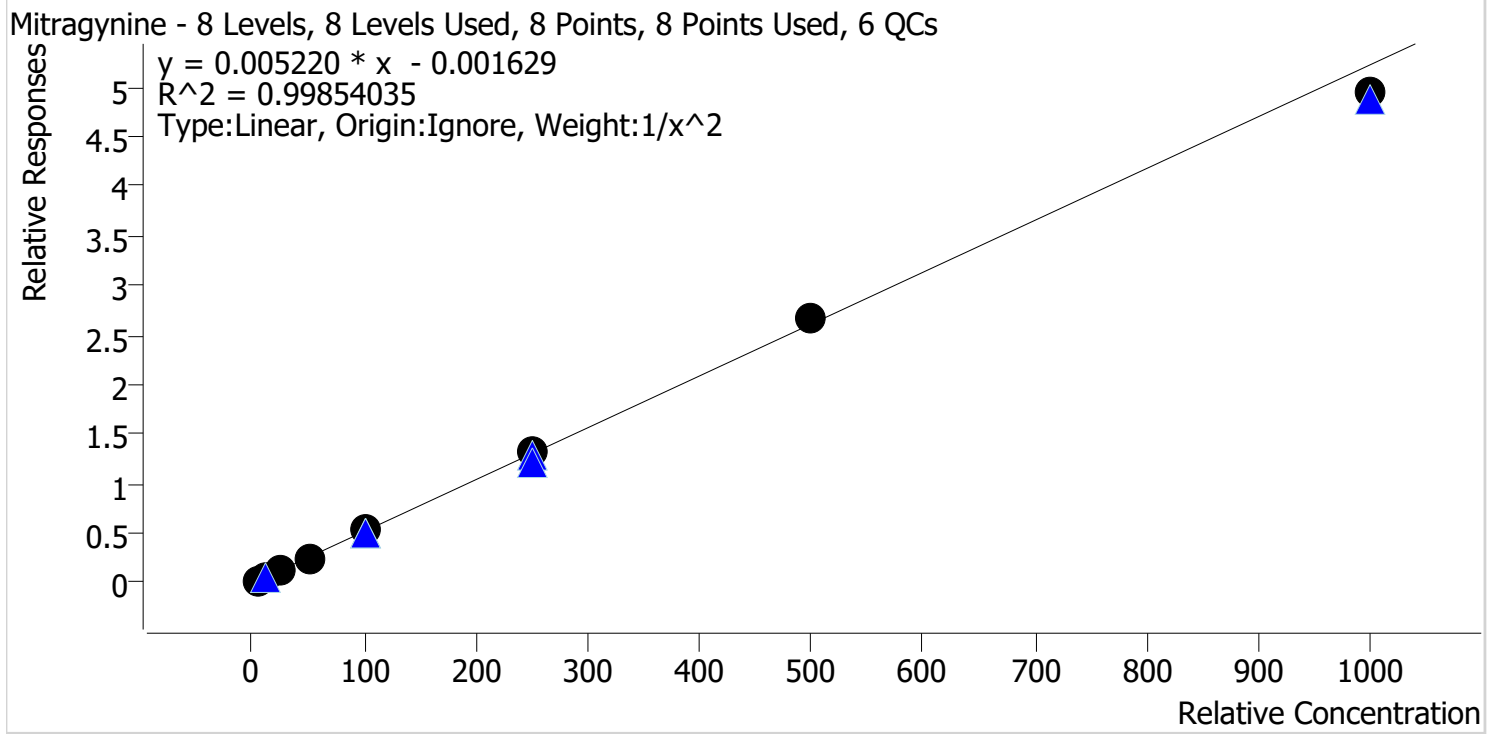
Sample	Level	Enabled	Expected Concentration	Final Concentration	Accuracy
p1 Cal 1-5ng	1	✓	5.0	4.8	96.5
p1 Cal 2-10ng	2	✓	10.0	10.2	101.7
p1 Cal 3 -25ng	3	✓	25.0	27.4	109.7
p1 Cal 4-50ng	4	✓	50.0	54.2	108.4
p1 Cal 5-100ng	5	✓	100.0	102.7	102.7
p1 Cal 6-250ng	6	✓	250.0	239.3	95.7
p1 Cal 7-500ng	7	✓	500.0	426.7	85.3
p1 Cal 8-1000ng	8	x	1000.0	683.2	68.3

CS



AM #28 Multi-Drug Quant. Calibration Curve Report

Batch results D:\MassHunter\Data\2024\AM 27 28\070824 AM 27 28 CS\QuantResults\AM 28 Cases.batch.bin
Last Cal. Update 7/11/2024 12:54 PM
Analyst Name ISP\Datastor
Analyte Mitragynine **Internal Standard** Methadone-D9



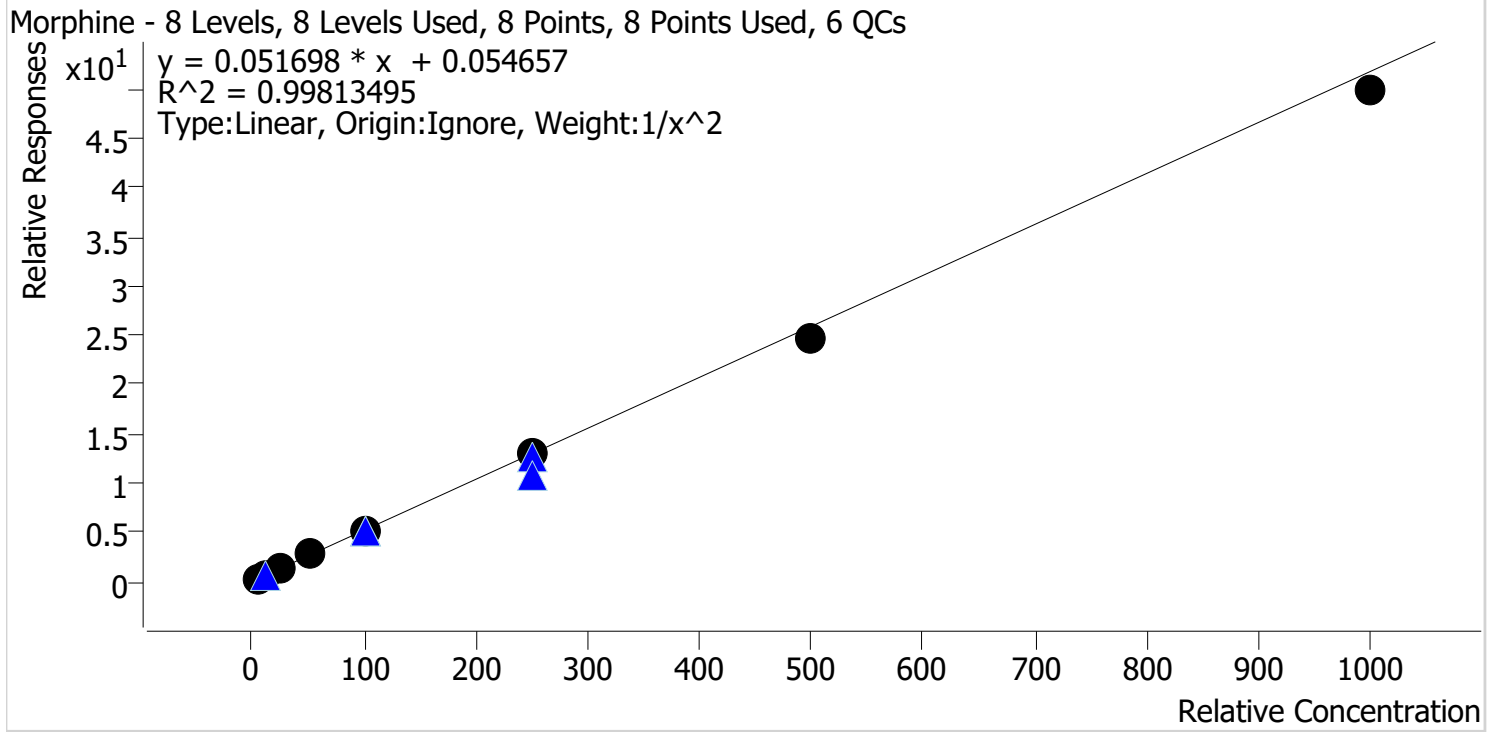
Sample	Level	Enabled	Expected Concentration	Final Concentration	Accuracy
p1 Cal 1-5ng	1	✓	5.0	5.0	100.9
p1 Cal 2-10ng	2	✓	10.0	9.8	98.4
p1 Cal 3 -25ng	3	✓	25.0	24.9	99.5
p1 Cal 4-50ng	4	✓	50.0	48.7	97.4
p1 Cal 5-100ng	5	✓	100.0	105.6	105.6
p1 Cal 6-250ng	6	✓	250.0	253.6	101.5
p1 Cal 7-500ng	7	✓	500.0	510.8	102.2
p1 Cal 8-1000ng	8	✓	1000.0	946.4	94.6

CS



AM #28 Multi-Drug Quant. Calibration Curve Report

Batch results D:\MassHunter\Data\2024\AM 27 28\070824 AM 27 28 CS\QuantResults\AM 28 Cases.batch.bin
Last Cal. Update 7/11/2024 12:54 PM
Analyst Name ISP\Datastor
Analyte Morphine **Internal Standard** Morphine-D6



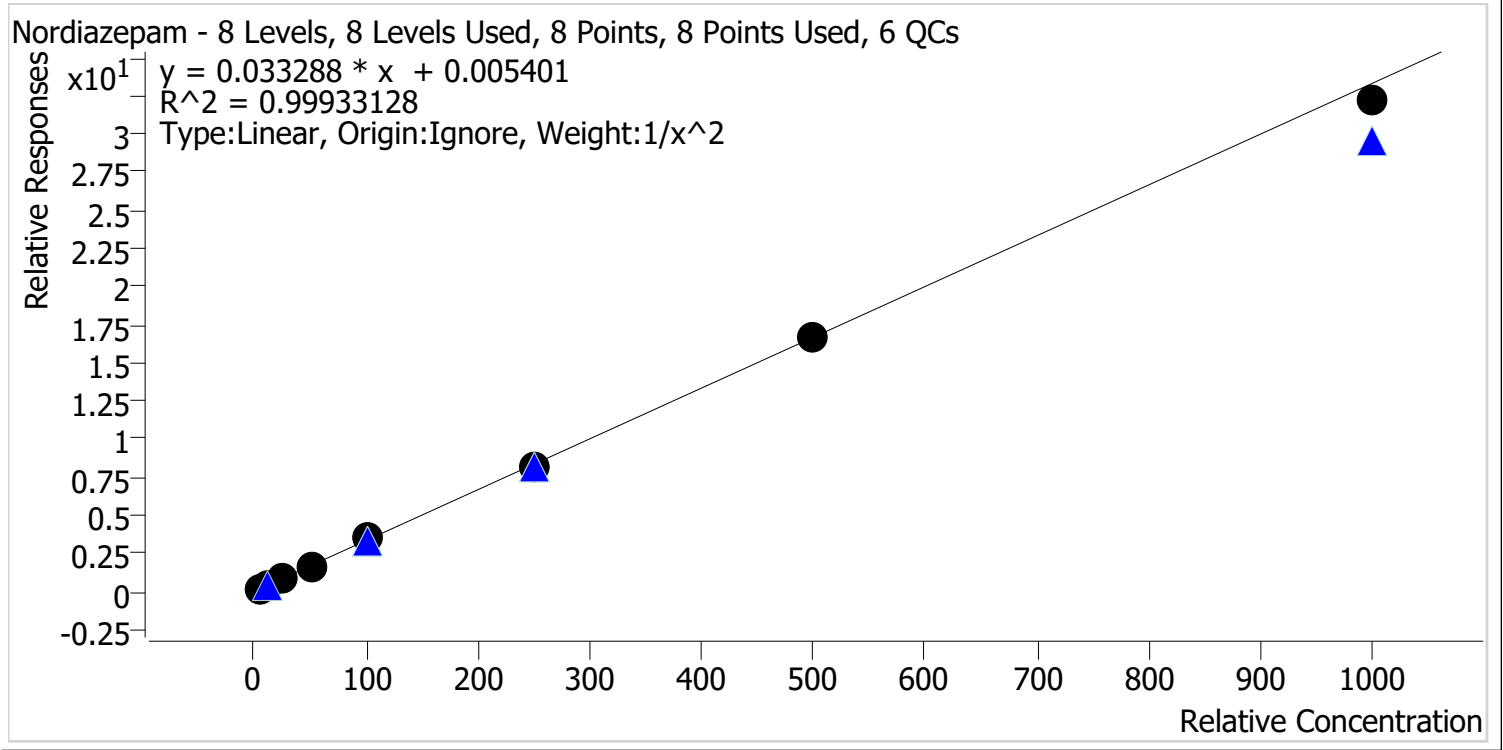
Sample	Level	Enabled	Expected Concentration	Final Concentration	Accuracy
p1 Cal 1-5ng	1	✓	5.0	4.8	96.9
p1 Cal 2-10ng	2	✓	10.0	10.4	103.9
p1 Cal 3 -25ng	3	✓	25.0	26.0	104.1
p1 Cal 4-50ng	4	✓	50.0	52.2	104.3
p1 Cal 5-100ng	5	✓	100.0	100.3	100.3
p1 Cal 6-250ng	6	✓	250.0	247.7	99.1
p1 Cal 7-500ng	7	✓	500.0	475.9	95.2
p1 Cal 8-1000ng	8	✓	1000.0	962.6	96.3

CS



AM #28 Multi-Drug Quant. Calibration Curve Report

Batch results D:\MassHunter\Data\2024\AM 27 28\070824 AM 27 28 CS\QuantResults\AM 28 Cases.batch.bin
Last Cal. Update 7/11/2024 12:54 PM
Analyst Name ISP\Datastor
Analyte Nordiazepam **Internal Standard** Nordiazepam-D5



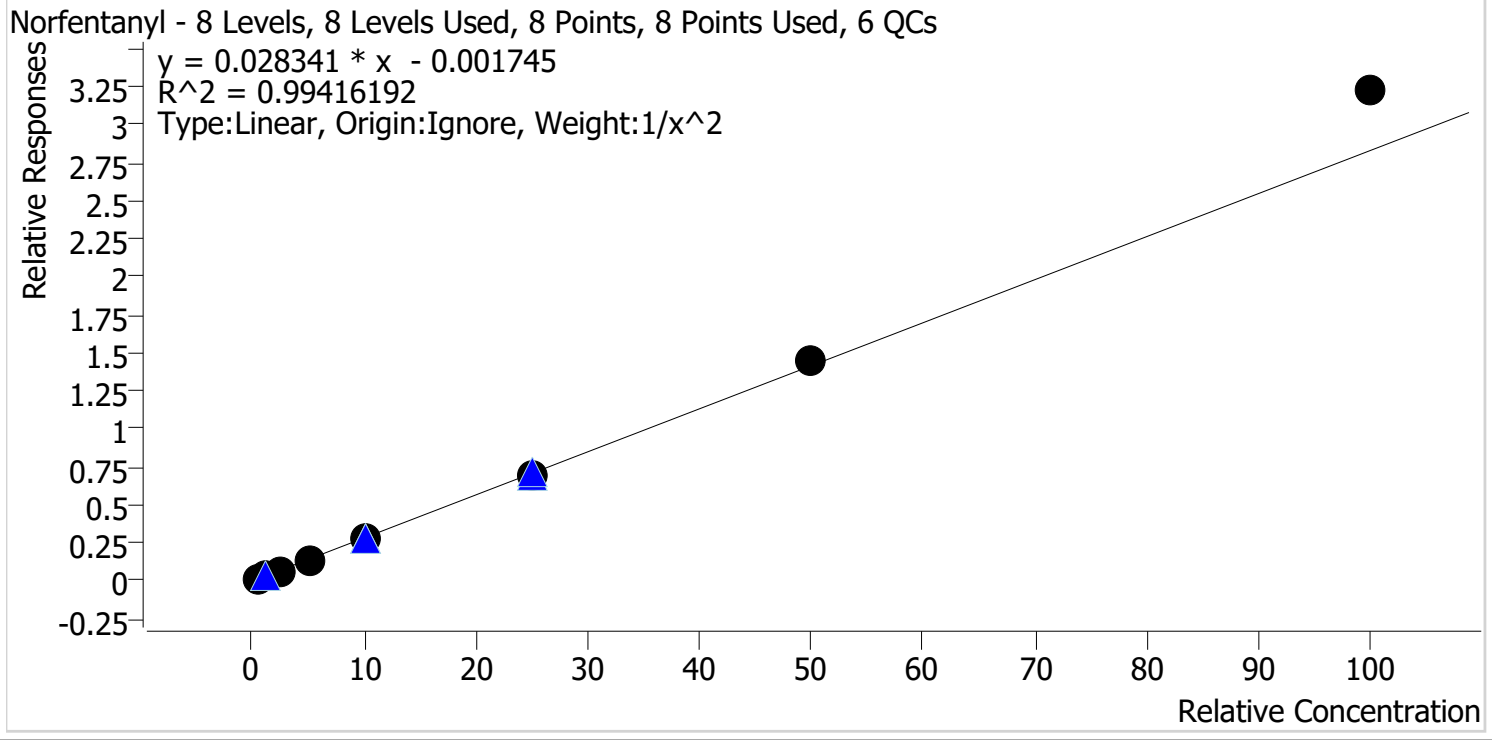
Sample	Level	Enabled	Expected Concentration	Final Concentration	Accuracy
p1 Cal 1-5ng	1	✓	5.0	4.9	98.5
p1 Cal 2-10ng	2	✓	10.0	10.3	102.6
p1 Cal 3 -25ng	3	✓	25.0	24.9	99.8
p1 Cal 4-50ng	4	✓	50.0	50.5	101.1
p1 Cal 5-100ng	5	✓	100.0	103.3	103.3
p1 Cal 6-250ng	6	✓	250.0	246.0	98.4
p1 Cal 7-500ng	7	✓	500.0	498.6	99.7
p1 Cal 8-1000ng	8	✓	1000.0	966.1	96.6

CS



AM #28 Multi-Drug Quant. Calibration Curve Report

Batch results D:\MassHunter\Data\2024\AM 27 28\070824 AM 27 28 CS\QuantResults\AM 28 Cases.batch.bin
Last Cal. Update 7/11/2024 12:54 PM
Analyst Name ISP\Datastor
Analyte Norfentanyl **Internal Standard** Norfentanyl-D5



Sample	Level	Enabled	Expected Concentration	Final Concentration	Accuracy
p1 Cal 1-5ng	1	✓	0.5	0.5	103.5
p1 Cal 2-10ng	2	✓	1.0	1.0	96.6
p1 Cal 3 -25ng	3	✓	2.5	2.4	94.5
p1 Cal 4-50ng	4	✓	5.0	4.8	95.0
p1 Cal 5-100ng	5	✓	10.0	9.5	95.1
p1 Cal 6-250ng	6	✓	25.0	24.6	98.2
p1 Cal 7-500ng	7	✓	50.0	51.6	103.1
p1 Cal 8-1000ng	8	✓	100.0	113.9	113.9

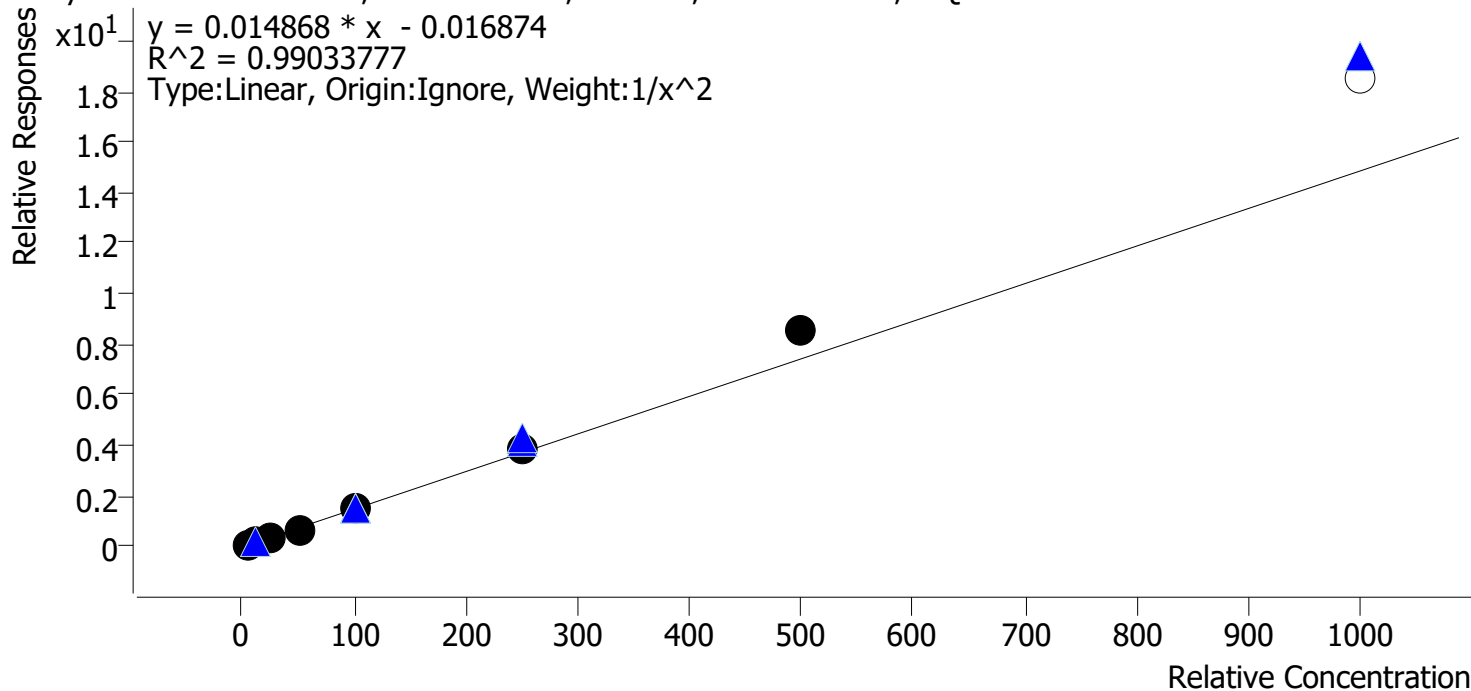
CS



AM #28 Multi-Drug Quant. Calibration Curve Report

Batch results D:\MassHunter\Data\2024\AM 27 28\070824 AM 27 28 CS\QuantResults\AM 28 Cases.batch.bin
Last Cal. Update 7/11/2024 12:54 PM
Analyst Name ISP\Datastor
Analyte Norhydrocodone **Internal Standard** Norhydrocodone-D3

Norhydrocodone - 8 Levels, 7 Levels Used, 8 Points, 7 Points Used, 6 QCs



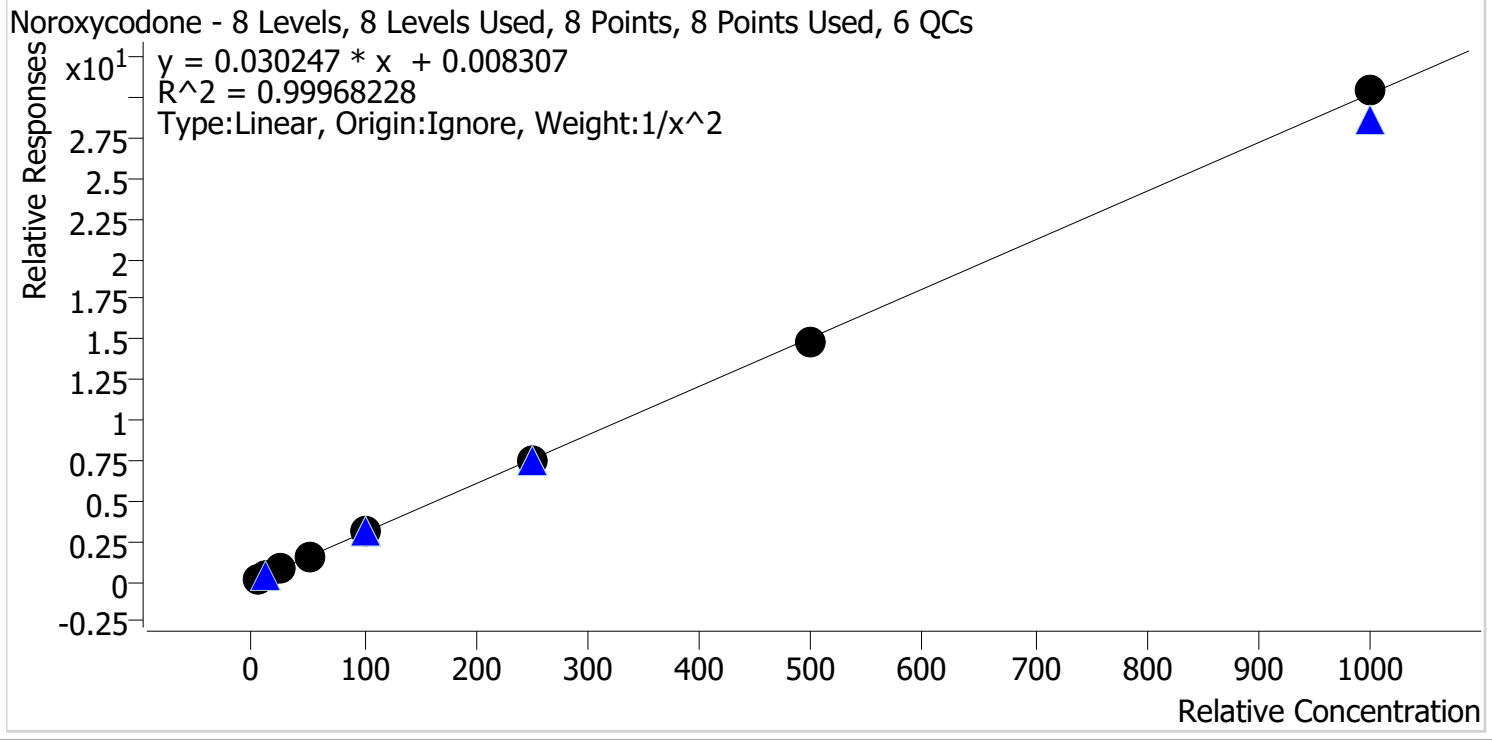
Sample	Level	Enabled	Expected Concentration	Final Concentration	Accuracy
p1 Cal 1-5ng	1	✓	5.0	5.2	104.8
p1 Cal 2-10ng	2	✓	10.0	9.5	95.4
p1 Cal 3 -25ng	3	✓	25.0	22.5	89.9
p1 Cal 4-50ng	4	✓	50.0	46.5	93.1
p1 Cal 5-100ng	5	✓	100.0	99.8	99.8
p1 Cal 6-250ng	6	✓	250.0	255.6	102.2
p1 Cal 7-500ng	7	✓	500.0	574.0	114.8
p1 Cal 8-1000ng	8	✗	1000.0	1247.7	124.8

CS



AM #28 Multi-Drug Quant. Calibration Curve Report

Batch results D:\MassHunter\Data\2024\AM 27 28\070824 AM 27 28 CS\QuantResults\AM 28 Cases.batch.bin
Last Cal. Update 7/11/2024 12:54 PM
Analyst Name ISP\Datastor
Analyte Noroxycodone **Internal Standard** Noroxycodone-D3



Sample	Level	Enabled	Expected Concentration	Final Concentration	Accuracy
p1 Cal 1-5ng	1	✓	5.0	5.0	99.1
p1 Cal 2-10ng	2	✓	10.0	10.1	101.4
p1 Cal 3 -25ng	3	✓	25.0	25.0	100.1
p1 Cal 4-50ng	4	✓	50.0	51.0	102.0
p1 Cal 5-100ng	5	✓	100.0	100.9	100.9
p1 Cal 6-250ng	6	✓	250.0	245.3	98.1
p1 Cal 7-500ng	7	✓	500.0	488.5	97.7
p1 Cal 8-1000ng	8	✓	1000.0	1006.9	100.7

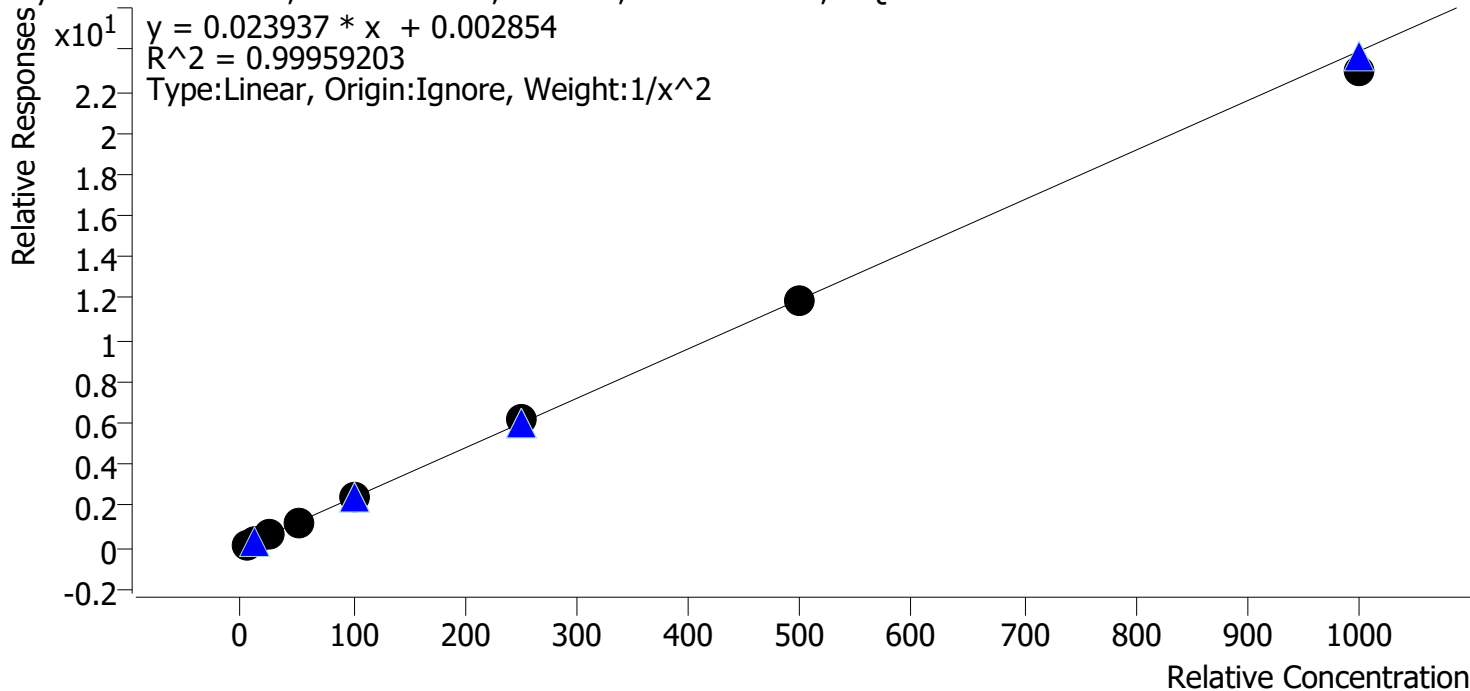
CS



AM #28 Multi-Drug Quant. Calibration Curve Report

Batch results D:\MassHunter\Data\2024\AM 27 28\070824 AM 27 28 CS\QuantResults\AM 28 Cases.batch.bin
Last Cal. Update 7/11/2024 12:54 PM
Analyst Name ISP\Datastor
Analyte Oxycodone **Internal Standard** Oxycodone-D6

Oxycodone - 8 Levels, 8 Levels Used, 8 Points, 8 Points Used, 6 QCs



Sample	Level	Enabled	Expected Concentration	Final Concentration	Accuracy
p1 Cal 1-5ng	1	✓	5.0	5.0	99.4
p1 Cal 2-10ng	2	✓	10.0	10.0	100.5
p1 Cal 3 -25ng	3	✓	25.0	25.3	101.2
p1 Cal 4-50ng	4	✓	50.0	50.5	100.9
p1 Cal 5-100ng	5	✓	100.0	100.9	100.9
p1 Cal 6-250ng	6	✓	250.0	254.5	101.8
p1 Cal 7-500ng	7	✓	500.0	494.9	99.0
p1 Cal 8-1000ng	8	✓	1000.0	963.4	96.3

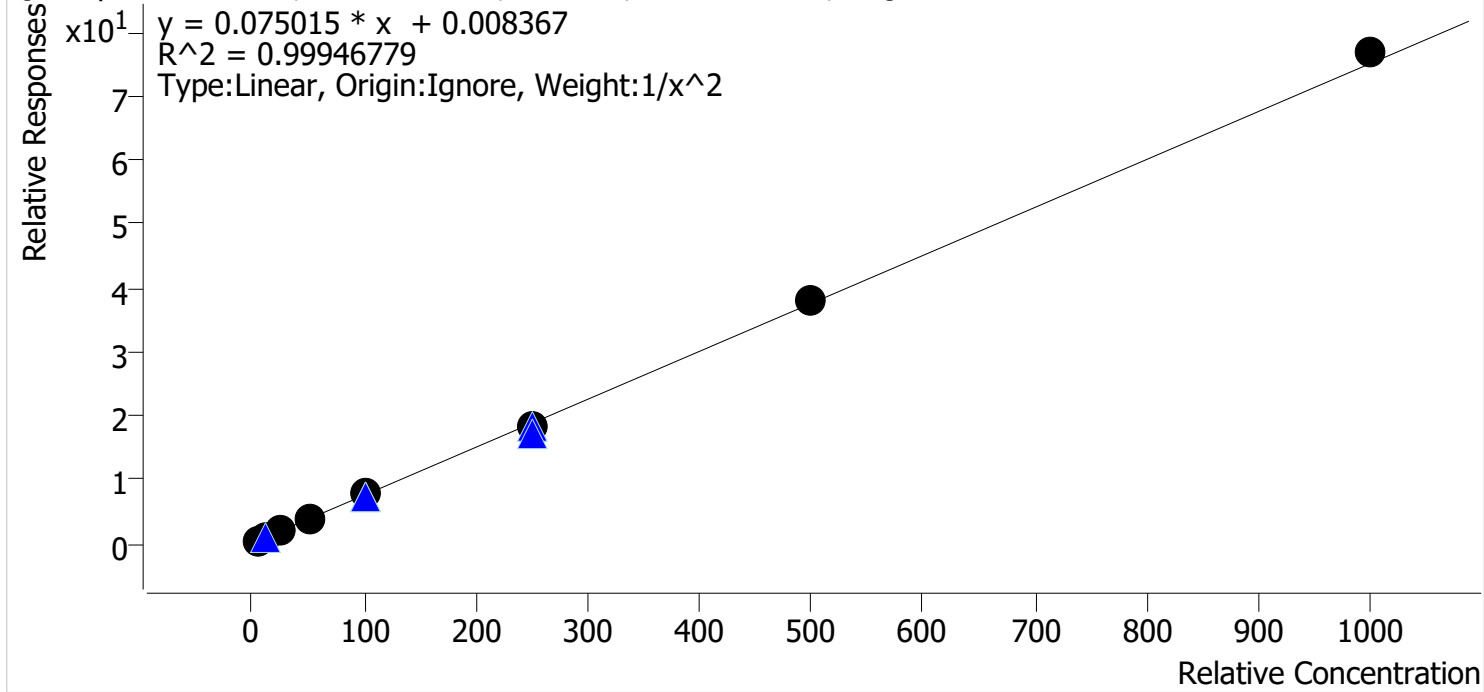
CS



AM #28 Multi-Drug Quant. Calibration Curve Report

Batch results D:\MassHunter\Data\2024\AM 27 28\070824 AM 27 28 CS\QuantResults\AM 28 Cases.batch.bin
Last Cal. Update 7/11/2024 12:54 PM
Analyst Name ISP\Datastor
Analyte Quetiapine **Internal Standard** Quetiapine-D8

Quetiapine - 8 Levels, 8 Levels Used, 8 Points, 8 Points Used, 6 QCs



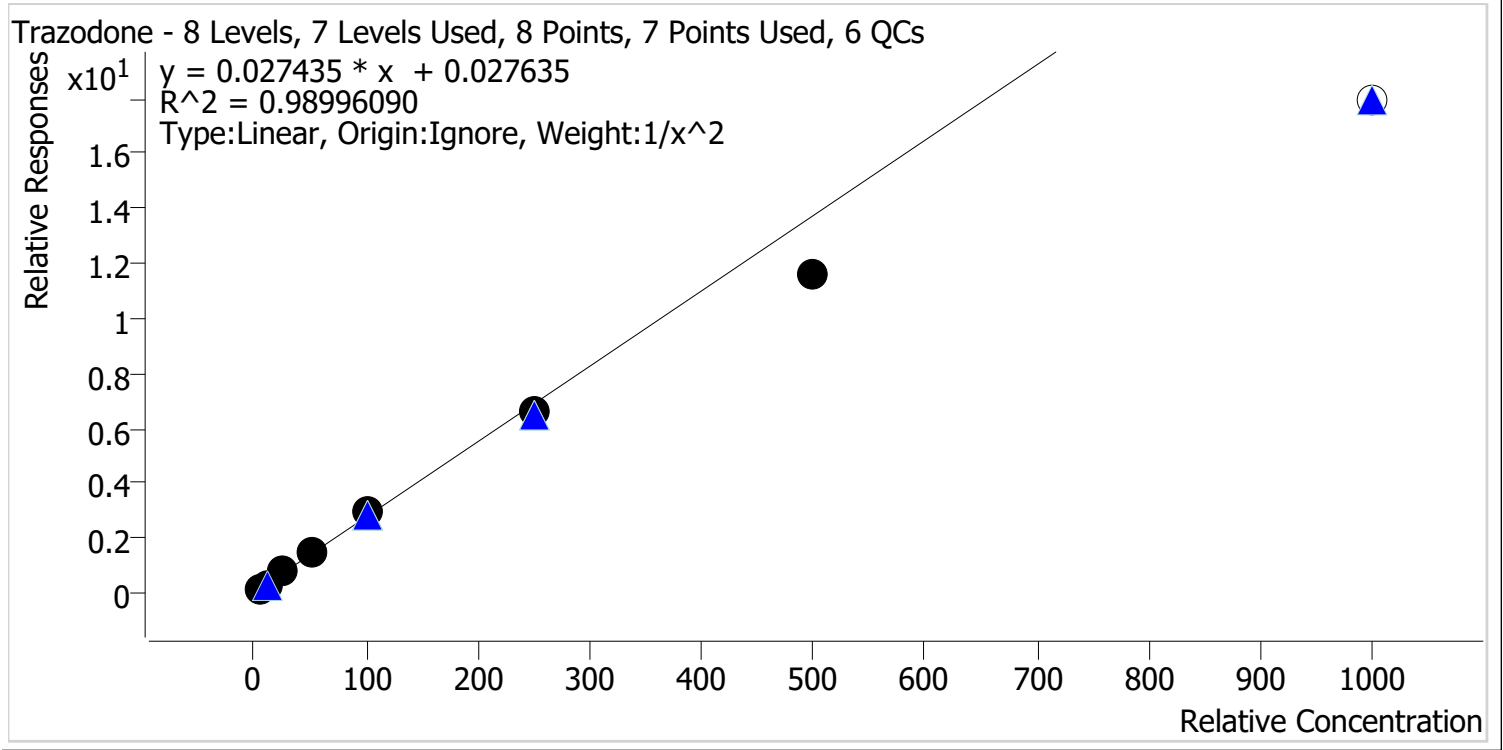
Sample	Level	Enabled	Expected Concentration	Final Concentration	Accuracy
p1 Cal 1-5ng	1	✓	5.0	5.1	101.8
p1 Cal 2-10ng	2	✓	10.0	9.7	97.0
p1 Cal 3 -25ng	3	✓	25.0	24.4	97.6
p1 Cal 4-50ng	4	✓	50.0	50.3	100.6
p1 Cal 5-100ng	5	✓	100.0	101.5	101.5
p1 Cal 6-250ng	6	✓	250.0	246.3	98.5
p1 Cal 7-500ng	7	✓	500.0	503.4	100.7
p1 Cal 8-1000ng	8	✓	1000.0	1022.9	102.3



CS

AM #28 Multi-Drug Quant. Calibration Curve Report

Batch results D:\MassHunter\Data\2024\AM 27 28\070824 AM 27 28 CS\QuantResults\AM 28 Cases.batch.bin
 Last Cal. Update 7/11/2024 12:54 PM
 Analyst Name ISP\Datastor
 Analyte Trazodone Internal Standard Trazodone-D6



Sample	Level	Enabled	Expected Concentration	Final Concentration	Accuracy
p1 Cal 1-5ng	1	✓	5.0	4.8	96.0
p1 Cal 2-10ng	2	✓	10.0	10.3	103.1
p1 Cal 3 -25ng	3	✓	25.0	27.1	108.3
p1 Cal 4-50ng	4	✓	50.0	53.7	107.3
p1 Cal 5-100ng	5	✓	100.0	105.3	105.3
p1 Cal 6-250ng	6	✓	250.0	238.3	95.3
p1 Cal 7-500ng	7	✓	500.0	423.1	84.6
p1 Cal 8-1000ng	8	✗	1000.0	652.5	65.3

AM #28 Multi-Drug Quant. Results

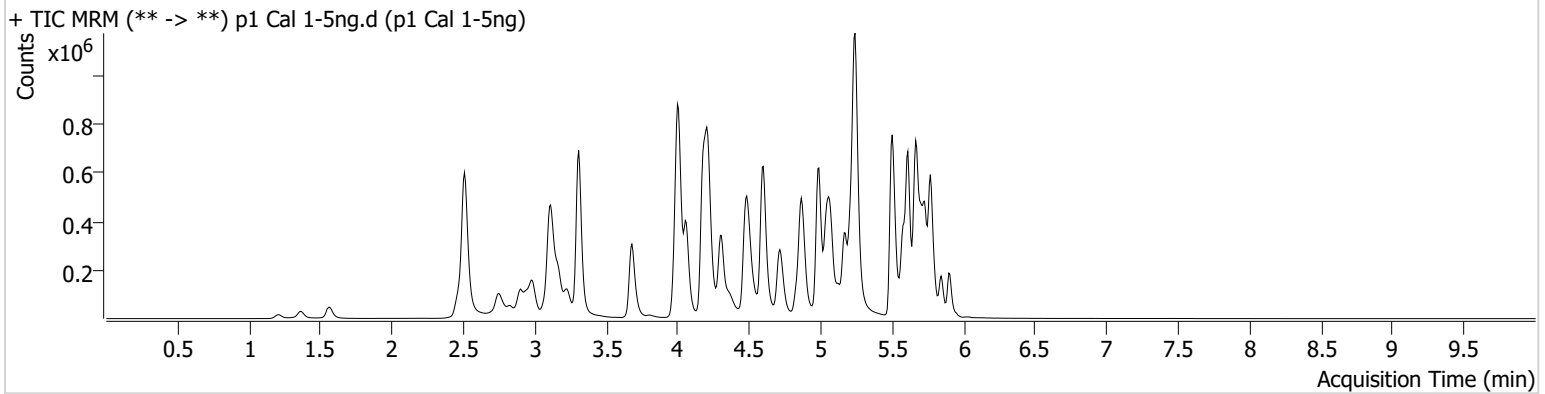


Batch results D:\MassHunter\Data\2024\AM 27 28\070824 AM 27 28 CS\QuantResults\AM 28 Cases.batch.bin
Calibration Last Update 7/11/2024 12:54:11 PM

Instrument Falco (069901) **Data File** p1 Cal 1-5ng.d
Type Cal **Sample** p1 Cal 1-5ng
Acq. Method AM 28 MDQ P1.m **Operator** Celena Shrum
Sample Position P2-A1 **Comment**
Injection Volume 2
Acq. Date-Time 7/8/2024 7:33:22 PM
Sample Info.

Only drugs and concentrations listed on the laboratory report itself are appropriate to be used for interpretation purposes. Any drugs or values included in the notes but not included on the report are used by laboratory personnel to make determinations/reach conclusions within the confines of the methods.

Sample Chromatogram



Name	RT	Resp.	S/N	Ratio	S/N	ISTD Resp.	Final Conc.
6-MAM	3.075	1440	606.30	66.0	730.40	87204	0.4992 ng/ml
Amphetamine	2.986	186525	2646.45	49.0	225.81	378553	4.7349 ng/ml
Benzoylcegonine	3.835	2521	1914.33	41.1	23.49	15880	5.0732 ng/ml
Bromazolam	5.766	39251	36.48	112.1	11767.94	195002	4.8625 ng/ml
Cocaine	4.209	75372	85007.82	51.4	362.81	1201794	5.0581 ng/ml
Codeine	2.521	8896	168.56	101.1	66.24	76316	4.7057 ng/ml
Dextromethorphan	5.223	56134	318.50	83.3	224.41	451070	5.0363 ng/ml
Duloxetine	5.606	10564	333.11	12.2	38.04	106666	4.9534 ng/ml
EDDP	5.215	56991	662.42	41.7	229.71	522982	5.0923 ng/ml
Fentanyl	5.055	9515	1711.84	77.0	55.40	950154	0.5058 ng/ml
Fluorofentanyl	5.116	22037	1469.74	44.3	8560.70	8993	0.2405 ng/ml
Hydrocodone	2.975	31396	40.80	36.6	117.09	280527	4.8830 ng/ml
Hydroxyzine	5.663	96447	771.05	70.5	3161.17	451070	5.1263 ng/ml
Lamotrigine	4.225	61105	3232.87	86.5	1311.57	1683063	36.4972 ng/ml
Lorazepam	5.706	36400	576.61	56.2	78.65	483128	4.7500 ng/ml
Methadone	5.611	131931	541.99	57.8	761.42	1021846	5.0939 ng/ml
Methamphetamine	3.168	333800	1124.68	36.8	2959.21	967887	4.9173 ng/ml
Metoprolol	4.272	18819	684.41	106.9	1135.17	1490529	4.8230 ng/ml
Mitragynine	5.191	25235	44429.26	34.9	102.42	1021846	5.0427 ng/ml
Morphine	1.213	5506	1224.11	47.2	305.84	18047	4.8441 ng/ml
Nordiazepam	5.853	42472	613.41	56.0	1656.80	250755	4.9259 ng/ml
Norfentanyl	4.028	15730	3483.86	36.2	108.71	1217894	0.5173 ng/ml
Norhydrocodone	3.009	5544	531.80	45.9	62.40	90807	5.2414 ng/ml
Noroxycodone	2.852	19094	226.91	47.9	338.27	120732	4.9541 ng/ml
Oxycodone	2.777	47156	693.67	29.6	283.49	387226	4.9682 ng/ml
Pseudoephedrine	2.518	173349	4147.83	16.4	436.15	1683063	5.1426 ng/ml
Quetiapine	5.519	110688	307.20	55.1	73612.83	283584	5.0917 ng/ml
Trazodone	5.123	139888	9012.32	60.5	240.43	877751	4.8018 ng/ml
Xylazine	4.028	59467	58031.62	44.5	119.82	510459	5.0632 ng/ml

AM #28 Multi-Drug Quant. Results

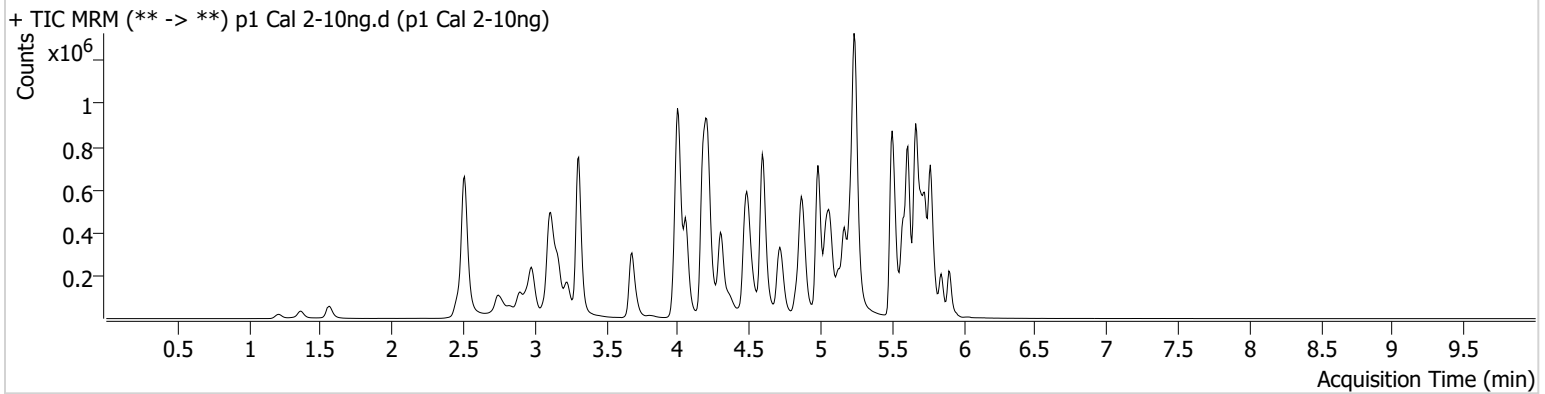


Batch results D:\MassHunter\Data\2024\AM 27 28\070824 AM 27 28 CS\QuantResults\AM 28 Cases.batch.bin
Calibration Last Update 7/11/2024 12:54:11 PM

Instrument Falco (069901) **Data File** p1 Cal 2-10ng.d
Type Cal **Sample** p1 Cal 2-10ng
Acq. Method AM 28 MDQ P1.m **Operator** Celena Shrum
Sample Position P2-B1 **Comment**
Injection Volume 2
Acq. Date-Time 7/8/2024 7:44:11 PM
Sample Info.

Only drugs and concentrations listed on the laboratory report itself are appropriate to be used for interpretation purposes. Any drugs or values included in the notes but not included on the report are used by laboratory personnel to make determinations/reach conclusions within the confines of the methods.

Sample Chromatogram



Name	RT	Resp.	S/N	Ratio	S/N	ISTD Resp.	Final Conc.
6-MAM	3.075	2997	982.85	75.8	36.25	88765	1.0117 ng/ml
Amphetamine	2.979	351524	400.05	49.0	10664.35	392316	10.5097 ng/ml
Benzoylcegonine	3.835	4607	166.35	35.0	223.65	15396	9.8230 ng/ml
Bromazolam	5.766	78983	119147.61	114.4	86537.95	195667	10.2922 ng/ml
Cocaine	4.209	147193	820.71	52.3	223.23	1198047	9.8529 ng/ml
Codeine	2.521	17120	155.01	98.2	20400.92	75096	10.5605 ng/ml
Dextromethorphan	5.223	110982	173.26	85.2	179.19	457056	9.9192 ng/ml
Duloxetine	5.606	21776	2605.18	13.3	45.03	108710	10.1922 ng/ml
EDDP	5.209	115548	3540.86	42.0	170.08	530803	9.8284 ng/ml
Fentanyl	5.055	18437	∞	77.0	8460.57	961621	0.9883 ng/ml
Fluorofentanyl	5.110	46193	1641.69	41.8	790.25	9183	0.8221 ng/ml
Hydrocodone	2.968	62890	69.80	35.4	41.00	283274	10.2195 ng/ml
Hydroxyzine	5.663	199122	35011.45	70.2	10523.32	457056	9.8469 ng/ml
Lamotrigine	4.218	119107	1508.67	85.2	1012.49	1674654	109.8506 ng/ml
Lorazepam	5.706	77428	847.50	53.3	82.40	493024	10.7321 ng/ml
Methadone	5.611	277587	796.47	53.8	2583.64	1041893	9.8671 ng/ml
Methamphetamine	3.168	469109	12679.94	37.0	198.71	979153	10.0654 ng/ml
Metoprolol	4.265	37235	6183.00	106.9	1378.88	1513531	10.1725 ng/ml
Mitragynine	5.191	51828	195.72	34.5	245.99	1041893	9.8408 ng/ml
Morphine	1.213	10243	318.55	49.1	527.84	17314	10.3869 ng/ml
Nordiazepam	5.853	85342	424.61	54.6	850.56	245937	10.2620 ng/ml
Norfentanyl	4.021	30821	960.25	38.6	114.80	1202067	0.9663 ng/ml
Norhydrocodone	3.002	11843	99.22	39.1	75.47	94761	9.5404 ng/ml
Noroxycodone	2.846	37656	271.01	48.4	27639.85	119509	10.1423 ng/ml
Oxycodone	2.777	94339	470.78	28.9	388.19	387569	10.0496 ng/ml
Pseudoephedrine	2.518	334222	9048.52	16.7	7402.43	1674654	9.7106 ng/ml
Quetiapine	5.519	211668	252.81	56.7	113183.60	287454	9.7046 ng/ml
Trazodone	5.123	279115	268807.98	61.2	179.74	898970	10.3099 ng/ml
Xylazine	4.028	117544	1066.05	45.5	600.09	508376	9.8970 ng/ml

AM #28 Multi-Drug Quant. Results

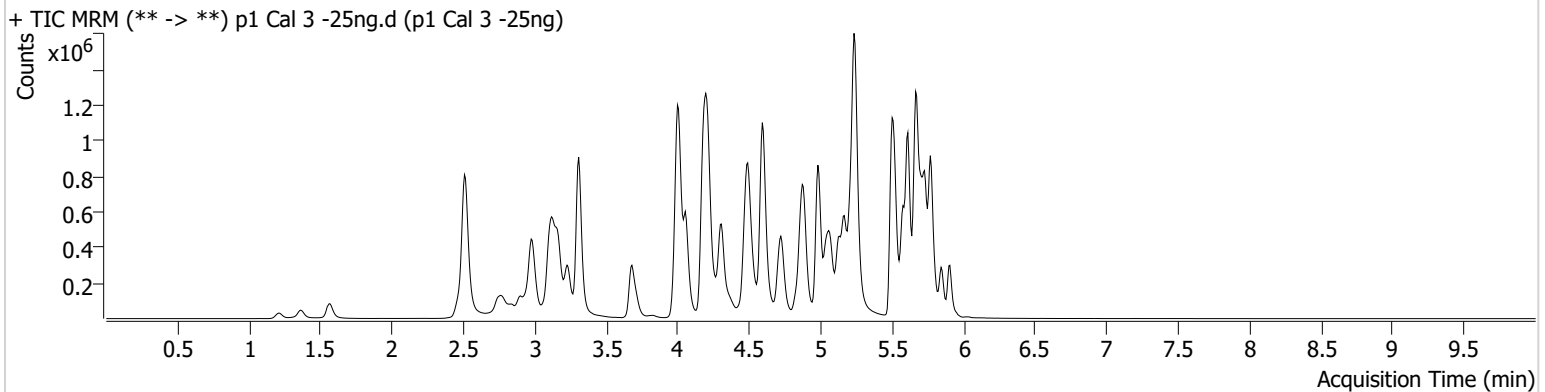


Batch results D:\MassHunter\Data\2024\AM 27 28\070824 AM 27 28 CS\QuantResults\AM 28 Cases.batch.bin
Calibration Last Update 7/11/2024 12:54:11 PM

Instrument Falco (069901) **Data File** p1 Cal 3 -25ng.d
Type Cal **Sample** p1 Cal 3 -25ng
Acq. Method AM 28 MDQ P1.m **Operator** Celena Shrum
Sample Position P2-C1 **Comment**
Injection Volume 2
Acq. Date-Time 7/8/2024 7:54:48 PM
Sample Info.

Only drugs and concentrations listed on the laboratory report itself are appropriate to be used for interpretation purposes. Any drugs or values included in the notes but not included on the report are used by laboratory personnel to make determinations/reach conclusions within the confines of the methods.

Sample Chromatogram



Name	RT	Resp.	S/N	Ratio	S/N	ISTD Resp.	Final Conc.
6-MAM	3.075	6926	365.21	73.3	3668.55	84976	2.4301 ng/ml
Amphetamine	2.986	785036	9131.17	48.6	1154.48	369046	28.1389 ng/ml
Benzoylcegonine	3.835	11257	299.13	37.7	285.37	15589	24.1185 ng/ml
Bromazolam	5.766	177151	299749.81	114.1	340243.76	178766	26.0495 ng/ml
Cocaine	4.209	338793	9474.36	51.1	185.15	1101312	24.5829 ng/ml
Codeine	2.521	38958	298.60	101.6	195836.85	71188	27.3381 ng/ml
Dextromethorphan	5.223	254161	6999.61	83.8	523.09	424011	24.6290 ng/ml
Duloxetine	5.606	47900	1755.73	12.7	1582.11	98688	24.9364 ng/ml
EDDP	5.209	246860	674.84	40.5	87554.61	450504	24.2170 ng/ml
Fentanyl	5.055	42651	234.40	75.2	276.19	904214	2.4633 ng/ml
Fluorofentanyl	5.110	107445	414.90	42.4	4069.56	8815	2.4363 ng/ml
Hydrocodone	2.968	148741	∞	37.6	80.28	273710	25.7996 ng/ml
Hydroxyzine	5.663	463052	30391.22	69.8	567042.21	424011	23.8147 ng/ml
Lamotrigine	4.218	249628	2400.71	87.1	8120.66	1586335	291.5383 ng/ml
Lorazepam	5.706	165439	2097.97	54.7	658.16	439495	26.7943 ng/ml
Methadone	5.611	638777	1957.84	53.8	287506.99	947260	24.0467 ng/ml
Methamphetamine	3.168	842343	627.08	37.2	8951.31	939775	26.0684 ng/ml
Metoprolol	4.265	91272	2334.98	102.9	1396.24	1444000	27.4172 ng/ml
Mitragynine	5.191	121449	115946.45	33.7	59222.99	947260	24.8717 ng/ml
Morphine	1.213	23138	1000.21	46.2	510.50	16525	26.0271 ng/ml
Nordiazepam	5.853	197111	1885.17	56.2	1218.34	235890	24.9397 ng/ml
Norfentanyl	4.021	72849	824.42	37.0	57.46	1117188	2.3624 ng/ml
Norhydrocodone	3.002	29184	97.58	39.6	73.74	91969	22.4776 ng/ml
Noroxycodone	2.846	87924	550.90	49.8	1161.60	114881	25.0283 ng/ml
Oxycodone	2.777	226838	1668.29	29.0	1133.97	372730	25.3053 ng/ml
Pseudoephedrine	2.518	793204	19854.18	16.2	5875.14	1586335	23.9211 ng/ml
Quetiapine	5.519	513203	15146.78	55.6	240632.18	279026	24.4071 ng/ml
Trazodone	5.130	653739	46144.04	60.9	280522.63	848309	27.0826 ng/ml
Xylazine	4.028	273214	1064.79	46.0	556.22	477808	24.2481 ng/ml

AM #28 Multi-Drug Quant. Results

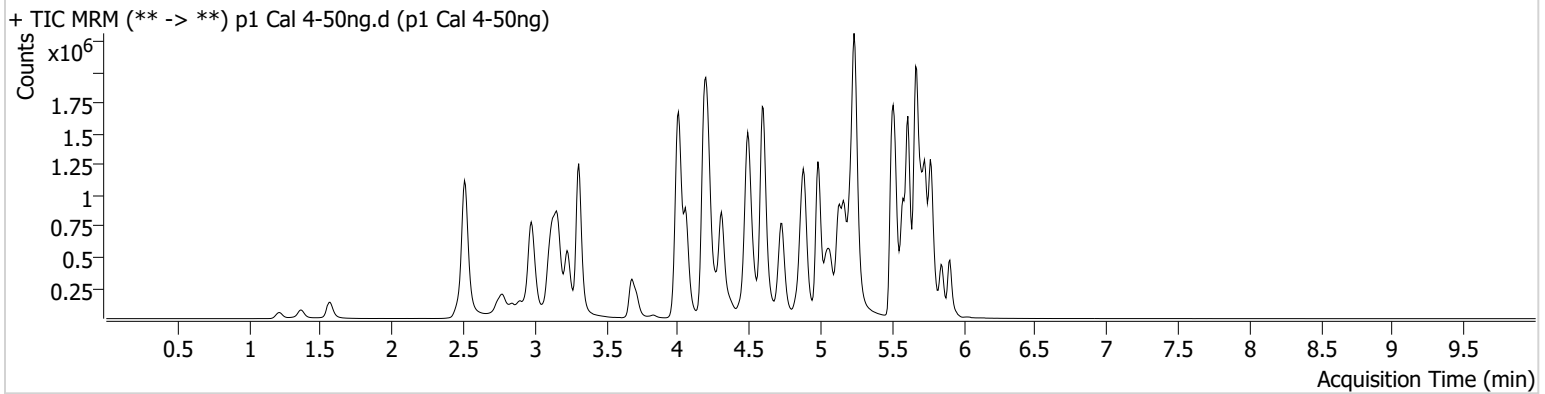


Batch results D:\MassHunter\Data\2024\AM 27 28\070824 AM 27 28 CS\QuantResults\AM 28 Cases.batch.bin
Calibration Last Update 7/11/2024 12:54:11 PM

Instrument Falco (069901) Data File p1 Cal 4-50ng.d
Type Cal Sample p1 Cal 4-50ng
Acq. Method AM 28 MDQ P1.m Operator Celena Shrum
Sample Position P2-D1 Comment
Injection Volume 2
Acq. Date-Time 7/8/2024 8:05:27 PM
Sample Info.

Only drugs and concentrations listed on the laboratory report itself are appropriate to be used for interpretation purposes. Any drugs or values included in the notes but not included on the report are used by laboratory personnel to make determinations/reach conclusions within the confines of the methods.

Sample Chromatogram



Name	RT	Resp.	S/N	Ratio	S/N	ISTD Resp.	Final Conc.
6-MAM	3.075	14805	290.04	72.7	12390.80	87060	5.0612 ng/ml
Amphetamine	2.979	1511556	192.34	48.4	32824.19	391105	53.0199 ng/ml
Benzoylcegonine	3.829	22730	1047.50	36.9	156.79	15294	49.9530 ng/ml
Bromazolam	5.766	340325	954.53	116.7	99432.94	174595	51.7597 ng/ml
Cocaine	4.209	688064	430.17	51.1	715.65	1108574	49.5399 ng/ml
Codeine	2.521	75322	221.56	99.8	111.17	70110	55.0363 ng/ml
Dextromethorphan	5.216	538136	5430.31	82.8	624.67	446809	49.5842 ng/ml
Duloxetine	5.606	100709	11502.96	12.9	468.90	104800	49.5364 ng/ml
EDDP	5.209	475960	536.95	42.6	417.42	432779	48.2569 ng/ml
Fentanyl	5.056	90851	67.33	77.6	144.29	970941	4.9078 ng/ml
Fluorofentanyl	5.110	235584	603.43	41.7	5771.56	9462	5.3022 ng/ml
Hydrocodone	2.968	304643	∞	36.7	1101.08	278369	52.5065 ng/ml
Hydroxyzine	5.663	973879	1473.07	72.8	23456.99	446809	46.9568 ng/ml
Lamotrigine	4.219	437886	2742.34	87.9	207.06	1581663	543.2825 ng/ml
Lorazepam	5.706	294151	4687.40	54.4	339.31	407806	52.0447 ng/ml
Methadone	5.611	1369939	8252.94	52.9	1727.76	1002799	48.0935 ng/ml
Methamphetamine	3.161	1536553	177.08	37.2	608.00	977678	51.9703 ng/ml
Metoprolol	4.272	184057	4224.05	102.3	2293.56	1494038	54.2120 ng/ml
Mitragynine	5.191	253316	3205.33	35.9	80786.14	1002799	48.7010 ng/ml
Morphine	1.213	45244	696.50	45.2	236.85	16442	52.1696 ng/ml
Nordiazepam	5.853	396658	794.93	55.4	2344.55	235039	50.5349 ng/ml
Norfentanyl	4.028	143301	1905.37	37.1	450.60	1077961	4.7521 ng/ml
Norhydrocodone	3.002	60626	209.19	40.9	788.57	89813	46.5350 ng/ml
Noroxycodone	2.846	171409	1262.52	50.7	231.90	110568	50.9777 ng/ml
Oxycodone	2.770	459534	1804.41	29.0	558.39	379547	50.4613 ng/ml
Pseudoephedrine	2.518	1578172	15373.04	16.5	9140.18	1581663	47.4646 ng/ml
Quetiapine	5.519	1044994	504.14	55.7	418637.54	276427	50.2833 ng/ml
Trazodone	5.130	1372874	1454435.53	62.2	20737.58	915367	53.6609 ng/ml
Xylazine	4.028	567304	46155.98	47.1	2712.10	489839	48.9538 ng/ml

AM #28 Multi-Drug Quant. Results

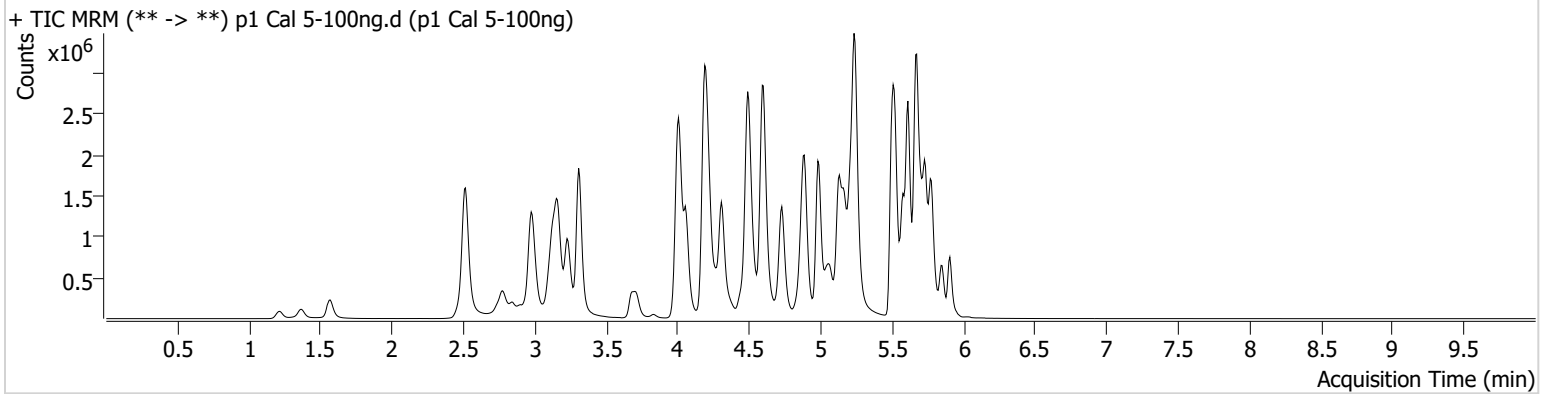


Batch results D:\MassHunter\Data\2024\AM 27 28\070824 AM 27 28 CS\QuantResults\AM 28 Cases.batch.bin
Calibration Last Update 7/11/2024 12:54:11 PM

Instrument	Falco (069901)	Data File	p1 Cal 5-100ng.d
Type	Cal	Sample	p1 Cal 5-100ng
Acq. Method	AM 28 MDQ P1.m	Operator	Celena Shrum
Sample Position	P2-E1	Comment	
Injection Volume	2		
Acq. Date-Time	7/8/2024 8:16:05 PM		
Sample Info.			

Only drugs and concentrations listed on the laboratory report itself are appropriate to be used for interpretation purposes. Any drugs or values included in the notes but not included on the report are used by laboratory personnel to make determinations/reach conclusions within the confines of the methods.

Sample Chromatogram



Name	RT	Resp.	S/N	Ratio	S/N	ISTD Resp.	Final Conc.
6-MAM	3.075	28428	37298.91	73.2	14308.64	85014	9.9433 ng/ml
Amphetamine	2.979	2664038	5342.44	47.6	230.73	372090	100.1982 ng/ml
Benzoylcegonine	3.835	45811	471.32	37.6	73.55	15131	102.0707 ng/ml
Bromazolam	5.766	571859	576157.31	116.7	100878.40	145789	104.7026 ng/ml
Cocaine	4.209	1265132	813632.95	52.0	487.48	1018612	99.0747 ng/ml
Codeine	2.521	134563	468.76	99.9	3407.85	65341	106.8008 ng/ml
Dextromethorphan	5.223	1023800	810.04	81.9	421.50	419624	100.5445 ng/ml
Duloxetine	5.606	187324	718.30	13.6	1001.22	95215	101.5928 ng/ml
EDDP	5.209	1031332	1718.81	41.4	8748.35	455901	98.8975 ng/ml
Fentanyl	5.055	180348	856.97	77.8	308.74	972029	9.7529 ng/ml
Fluorofentanyl	5.110	461836	993.51	41.3	304.76	9174	11.0401 ng/ml
Hydrocodone	2.968	561008	1123.11	38.7	∞	260144	103.9922 ng/ml
Hydroxyzine	5.670	1857961	24036.42	74.9	56383.27	419624	94.7930 ng/ml
Lamotrigine	4.218	653317	10463.16	89.7	116756.19	1435529	918.8314 ng/ml
Lorazepam	5.706	398294	2487.50	56.1	1101.47	306330	94.4303 ng/ml
Methadone	5.611	2689615	3068.99	53.7	1128.24	976013	96.3975 ng/ml
Methamphetamine	3.161	2763196	46850.87	36.6	3210.50	943033	104.0755 ng/ml
Metoprolol	4.272	333630	4232.66	103.7	582754.98	1440129	102.6646 ng/ml
Mitragynine	5.191	536448	229.82	33.7	301839.53	976013	105.5976 ng/ml
Morphine	1.213	88855	598.32	45.8	395.69	16959	100.2905 ng/ml
Nordiazepam	5.853	700657	2699.81	55.1	809.31	203437	103.3001 ng/ml
Norfentanyl	4.028	249495	11588.66	38.5	673.60	931792	9.5092 ng/ml
Norhydrocodone	3.002	125397	554.28	41.0	182.86	85523	99.7501 ng/ml
Noroxycodone	2.846	321869	839.40	51.1	1852.25	105176	100.9008 ng/ml
Oxycodone	2.770	895354	3322.02	29.7	855.29	370360	100.8762 ng/ml
Pseudoephedrine	2.518	2965443	50493.70	16.2	34283.51	1435529	97.9768 ng/ml
Quetiapine	5.519	1999103	94271.95	58.1	680.85	262386	101.4543 ng/ml
Trazodone	5.130	2625702	255293.04	64.3	145419.95	900383	105.2888 ng/ml
Xylazine	4.021	1081063	60041.68	47.3	3292.35	454709	100.3315 ng/ml

AM #28 Multi-Drug Quant. Results

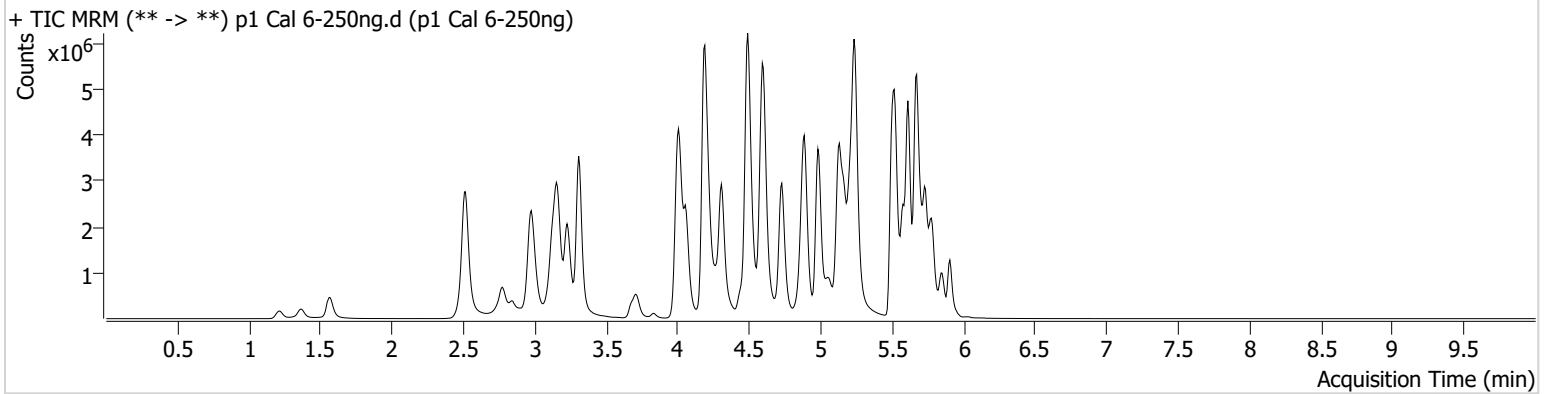


Batch results D:\MassHunter\Data\2024\AM 27 28\070824 AM 27 28 CS\QuantResults\AM 28 Cases.batch.bin
Calibration Last Update 7/11/2024 12:54:11 PM

Instrument Falco (069901) **Data File** p1 Cal 6-250ng.d
Type Cal **Sample** p1 Cal 6-250ng
Acq. Method AM 28 MDQ P1.m **Operator** Celena Shrum
Sample Position P2-F1 **Comment**
Injection Volume 2
Acq. Date-Time 7/8/2024 8:26:43 PM
Sample Info.

Only drugs and concentrations listed on the laboratory report itself are appropriate to be used for interpretation purposes. Any drugs or values included in the notes but not included on the report are used by laboratory personnel to make determinations/reach conclusions within the confines of the methods.

Sample Chromatogram



Name	RT	Resp.	S/N	Ratio	S/N	ISTD Resp.	Final Conc.
6-MAM	3.075	68748	3624.48	69.5	2277.83	79764	25.6152 ng/ml
Amphetamine	2.979	5067572	33728.05	47.4	66175.25	352502	203.5286 ng/ml
Benzoylcegonine	3.829	115873	537.90	37.8	606.38	15461	253.0941 ng/ml
Bromazolam	5.766	949683	942976.99	119.0	804102.21	104753	242.7008 ng/ml
Cocaine	4.209	2610812	802.57	51.0	1157.20	821048	253.5636 ng/ml
Codeine	2.521	272080	933.46	94.1	376.42	55052	258.2914 ng/ml
Dextromethorphan	5.216	2090764	562.97	80.0	1566.44	340703	253.0380 ng/ml
Duloxetine	5.606	267095	5707.97	13.0	3803.45	54179	254.8267 ng/ml
EDDP	5.209	2139495	895.89	41.9	1768.41	374035	249.5399 ng/ml
Fentanyl	5.055	421468	34053.39	76.7	231024.69	894081	24.8129 ng/ml
Fluorofentanyl	5.110	1001925	16491.40	41.9	27614.04	8533	26.1662 ng/ml
Hydrocodone	2.961	1301081	403.33	40.0	438.67	255074	246.7107 ng/ml
Hydroxyzine	5.670	3873367	75918.56	76.9	1247.08	340703	242.4921 ng/ml
Lamotrigine	4.225	953235	11558.31	89.8	618.85	1239775	1579.8907 ng/ml
Lorazepam	5.706	520608	9362.61	56.5	1434.75	170876	222.3015 ng/ml
Methadone	5.611	5902194	3869.73	52.6	1395.63	809544	254.0408 ng/ml
Methamphetamine	3.161	6131906	116769.38	36.2	123030.75	921048	247.0425 ng/ml
Metoprolol	4.272	681429	1043649.02	104.5	4000.99	1267753	239.2788 ng/ml
Mitragynine	5.184	1070559	591299.64	34.9	2089.17	809544	253.6305 ng/ml
Morphine	1.213	183940	∞	45.4	3558.57	14305	247.6699 ng/ml
Nordiazepam	5.853	1191556	∞	56.6	775.49	145415	245.9938 ng/ml
Norfentanyl	4.028	452362	15863.18	37.6	5088.28	651770	24.5505 ng/ml
Norhydrocodone	3.002	289779	1706.28	40.2	110.00	76592	255.5979 ng/ml
Noroxycodone	2.846	690237	444.90	50.8	492.29	92911	245.3344 ng/ml
Oxycodone	2.770	2021834	1085.84	29.6	963.77	331695	254.5276 ng/ml
Pseudoephedrine	2.518	6492362	131419.71	15.9	41626.23	1239775	247.9575 ng/ml
Quetiapine	5.519	4221460	64159.41	59.9	136267.21	228406	246.2702 ng/ml
Trazodone	5.130	5673766	118670.89	68.2	137657.06	864378	238.2510 ng/ml
Xylazine	4.021	2426461	126642.39	48.2	2713.60	406840	251.4587 ng/ml

AM #28 Multi-Drug Quant. Results

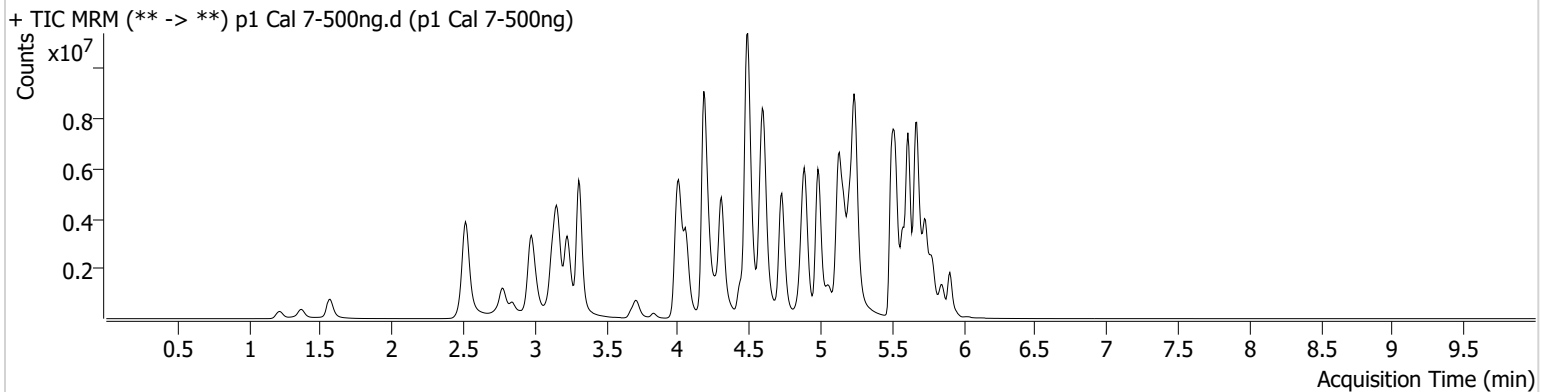


Batch results D:\MassHunter\Data\2024\AM 27 28\070824 AM 27 28 CS\QuantResults\AM 28 Cases.batch.bin
Calibration Last Update 7/11/2024 12:54:11 PM

Instrument Falco (069901) **Data File** p1 Cal 7-500ng.d
Type Cal **Sample** p1 Cal 7-500ng
Acq. Method AM 28 MDQ P1.m **Operator** Celena Shrum
Sample Position P2-G1 **Comment**
Injection Volume 2
Acq. Date-Time 7/8/2024 8:37:22 PM
Sample Info.

Only drugs and concentrations listed on the laboratory report itself are appropriate to be used for interpretation purposes. Any drugs or values included in the notes but not included on the report are used by laboratory personnel to make determinations/reach conclusions within the confines of the methods.

Sample Chromatogram



Name	RT	Resp.	S/N	Ratio	S/N	ISTD Resp.	Final Conc.
6-MAM	3.075	122097	6412.79	69.8	2693.53	71989	50.3983 ng/ml
Amphetamine	2.979	7186414	68099.54	47.5	52222.58	308145	331.6195 ng/ml
Benzoylcegonine	3.829	228881	28969.50	36.9	598.57	15333	504.3805 ng/ml
Bromazolam	5.766	1232375	23898.17	119.9	56103.50	70410	469.0617 ng/ml
Cocaine	4.209	4089961	29951.44	51.5	586.29	645011	505.5718 ng/ml
Codeine	2.521	391728	54.98	98.5	349.28	45925	446.8183 ng/ml
Dextromethorphan	5.216	3249545	5954.07	79.7	∞	265928	503.9632 ng/ml
Duloxetine	5.606	414390	3995.75	13.6	1349.93	41820	512.3612 ng/ml
EDDP	5.209	4037512	170352.94	41.1	1763.06	346870	507.4383 ng/ml
Fentanyl	5.055	870029	1234.70	75.3	1663960.21	907436	50.4895 ng/ml
Fluorofentanyl	5.110	1881646	523028.41	42.3	25915.25	8191	51.4906 ng/ml
Hydrocodone	2.961	2300446	390.86	40.5	743.48	231187	481.7968 ng/ml
Hydroxyzine	5.663	6566905	296358.46	76.1	48366.20	265928	526.0471 ng/ml
Lamotrigine	4.225	1039628	70620.96	89.2	24485.39	957225	2248.1881 ng/ml
Lorazepam	5.699	533209	32797.97	55.0	2323.92	81202	480.0032 ng/ml
Methadone	5.611	10251248	3390.56	51.6	8898.91	668759	533.4507 ng/ml
Methamphetamine	3.161	10260318	60494.85	35.2	54312.40	859667	449.4713 ng/ml
Metoprolol	4.265	1028174	8778.04	103.9	2580.42	1074189	426.7298 ng/ml
Mitragynine	5.184	1782151	794820.53	34.8	30017.14	668759	510.7840 ng/ml
Morphine	1.213	325182	2667.08	47.4	3048.73	13187	475.9236 ng/ml
Nordiazepam	5.853	1727814	1879.23	55.1	457.25	104061	498.6264 ng/ml
Norfentanyl	4.028	598939	53704.12	38.2	2413.66	410270	51.5715 ng/ml
Norhydrocodone	3.002	524243	138.50	39.6	1295.50	61550	573.9880 ng/ml
Noroxycodone	2.846	1167783	1129.51	51.6	327.49	78988	488.5069 ng/ml
Oxycodone	2.770	3829792	1006.98	29.2	1321.48	323231	494.8670 ng/ml
Pseudoephedrine	2.518	10559300	137056.40	15.8	148.13	957225	522.0221 ng/ml
Quetiapine	5.519	6572787	148562.66	59.2	117339.50	174034	503.3537 ng/ml
Trazodone	5.130	9751255	237183.41	69.8	220703.81	838035	423.1214 ng/ml
Xylazine	4.021	4123235	4364.44	49.4	59586.18	338873	512.8396 ng/ml

AM #28 Multi-Drug Quant. Results

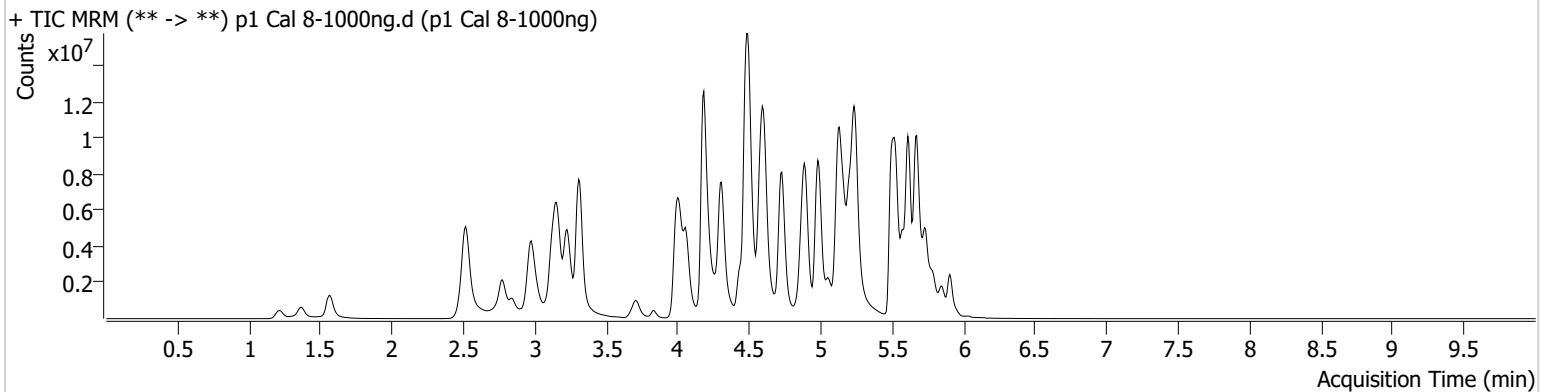


Batch results D:\MassHunter\Data\2024\AM 27 28\070824 AM 27 28 CS\QuantResults\AM 28 Cases.batch.bin
Calibration Last Update 7/11/2024 12:54:11 PM

Instrument Falco (069901) **Data File** p1 Cal 8-1000ng.d
Type Cal **Sample** p1 Cal 8-1000ng
Acq. Method AM 28 MDQ P1.m **Operator** Celena Shrum
Sample Position P2-H1 **Comment**
Injection Volume 2
Acq. Date-Time 7/8/2024 8:48:00 PM
Sample Info.

Only drugs and concentrations listed on the laboratory report itself are appropriate to be used for interpretation purposes. Any drugs or values included in the notes but not included on the report are used by laboratory personnel to make determinations/reach conclusions within the confines of the methods.

Sample Chromatogram



Name	RT	Resp.	S/N	Ratio	S/N	ISTD Resp.	Final Conc.
6-MAM	3.075	213171	3032.71	70.6	124101.08	64710	97.8803 ng/ml
Amphetamine	2.979	9507313	94621.35	47.4	47425.80	284844	475.6072 ng/ml
Benzoylcegonine	3.829	504004	2806.98	36.4	501.24	17079	997.4173 ng/ml
Bromazolam	5.759	1545102	1096880.99	120.1	4738.12	42928	965.1530 ng/ml
Cocaine	4.209	6037768	1725.51	51.2	1029.63	475273	1012.8359 ng/ml
Codeine	2.521	585211	∞	95.9	214.38	37725	813.7622 ng/ml
Dextromethorphan	5.216	4375321	122857.43	78.7	73844.59	180742	998.4628 ng/ml
Duloxetine	5.599	389282	3405.81	14.6	749.23	21372	941.9531 ng/ml
EDDP	5.209	8248858	1279.21	39.6	1770.96	338215	1062.8769 ng/ml
Fentanyl	5.055	1785720	1531404.17	75.2	994.20	891057	105.5573 ng/ml
Fluorofentanyl	5.103	3303090	212730.51	43.6	18658.71	7714	96.2424 ng/ml
Hydrocodone	2.961	4225833	∞	39.8	321.37	220373	928.9745 ng/ml
Hydroxyzine	5.663	9578998	238543.50	76.4	45209.22	180742	1128.3244 ng/ml
Lamotrigine	4.232	1053850	8029.39	89.7	19989.59	732867	2989.5699 ng/ml
Lorazepam	5.706	578419	32838.13	54.9	4463.02	39528	1070.6092 ng/ml
Methadone	5.611	15793618	3987.59	53.6	20343.46	536591	1023.7385 ng/ml
Methamphetamine	3.155	16321914	338623.05	34.6	64248.73	836106	740.4402 ng/ml
Metoprolol	4.265	1423416	808.50	105.2	50753.45	929528	683.2008 ng/ml
Mitragynine	5.184	2650246	325.74	36.0	1205.60	536591	946.4180 ng/ml
Morphine	1.213	566659	1691.57	48.3	∞	11374	962.5971 ng/ml
Nordiazepam	5.853	1980282	634.28	58.3	29808.34	61565	966.1061 ng/ml
Norfentanyl	4.028	636077	13122.24	38.8	4505.28	197089	113.9355 ng/ml
Norhydrocodone	3.002	862806	∞	41.0	∞	46551	1247.7196 ng/ml
Noroxycodone	2.846	1952819	918.26	50.5	78.91	64102	1006.9019 ng/ml
Oxycodone	2.770	7214340	2830.74	29.3	4505.35	312815	963.3566 ng/ml
Pseudoephedrine	2.518	16709103	142760.43	15.1	125.97	732867	1078.6468 ng/ml
Quetiapine	5.526	9872120	1554.37	58.9	80991.41	128639	1022.9224 ng/ml
Trazodone	5.130	15447082	398993.28	72.2	202.00	861547	652.5246 ng/ml
Xylazine	4.015	6974845	210259.98	48.9	10835.70	289927	1013.8222 ng/ml